



Delaware Marine Debris Emergency Response Guide: Field Reference Guide

NOAA Marine Debris Program
National Oceanic and Atmospheric Administration
U.S. Department of Commerce
October 2022

Table of Contents

1. Introduction	2
1.1. Purpose	2
1.2. Scope of <i>Guide</i>	2
2. Delaware Waterway Debris Response Flowchart	3
3. Agency Jurisdictions and Capabilities	5
3.1. Agency Jurisdiction Map	6
3.2. Response Capabilities	7
4. Permitting and Compliance Requirements in Delaware	10
5. Organization Contact Information	12

1. Introduction

1.1 Purpose

This *Field Reference Guide* condenses information contained in the *Delaware Marine Debris Emergency Response Guide: Comprehensive Guidance Document (Guide)* to facilitate use during emergency response operations. While the *Comprehensive Guidance Document* serves as a complete reference for incident waterway debris response in Delaware, the *Field Reference Guide* includes the most pertinent information for quick reference in the field and during times of crisis. Both documents and subsequent versions will be posted on the National Oceanic and Atmospheric Administration’s (NOAA) Marine Debris Program website at <https://marinedebris.noaa.gov/>.

The purpose of this document is to improve preparedness for response and recovery operations following an acute waterway debris incident in Delaware. The term acute waterway debris incident is used to describe an incident – either natural or man-made – that results in the release of large amounts of waterway debris. The *Comprehensive Guidance Document* and complementary *Field Reference Guide* outline existing response structures at the local, state, and federal levels to facilitate a coordinated, well-managed, and immediate response to waterway debris incidents impacting the state of Delaware. Individual organization roles and responsibilities are presented in a consolidated one-page flowchart, which functions as a decision tree for waterway debris response. Additionally, permitting and compliance requirements for waterway debris removal have been synthesized in a one-page reference handout.

1.2 Scope of *Guide*

The *Comprehensive Guidance Document* and *Field Reference Guide* address potential acute waterway debris incidents affecting the state of Delaware. For purposes of these documents, the term waterway debris (or incident waterway debris) is used in lieu of the term marine debris. In 33 U.S.C. § 1956(3), marine debris is defined as any persistent solid material that is manufactured or processed and directly or indirectly, intentionally or unintentionally, disposed of or abandoned into the marine environment or the Great Lakes. Although vegetative debris is not included in the legal

definition for marine debris, stakeholders have identified it as a common debris stream of concern following natural disasters. To account for both marine debris and vegetative debris in this document, the term waterway debris is used and includes any solid material, including but not limited to vegetative debris and debris exposed to or that has the potential to release oil, hazardous substances, pollutants, or contaminants, that enters a waterway following an acute incident and poses a threat to the natural or man-made environment. This may include shoreline and wetland debris and debris in some inland, non-tidal waterways.

2. Delaware Waterway Debris Response Flowchart

The Delaware Waterway Debris Response Flowchart included in this section provides a visual one-page representation of organization roles and responsibilities. The flowchart functions as a decision tree for waterway debris response with color-coded endpoints. Yellow endpoints represent response to waterway debris that is exposed to or has the potential to release oil, hazardous substances, pollutants, or contaminants. Blue endpoints represent response to waterway debris that is not exposed to and does not have the potential to release oil, hazardous substances, pollutants, or contaminants. Endpoints within the green shaded area indicate that response may occur under Robert T. Stafford Disaster Relief and Emergency Assistance Act (Stafford Act) authorities and/or funding.

Delaware Waterway Debris Response Flowchart

Waterway Debris/Incident Waterway Debris
Any solid material, including but not limited to vegetative debris and debris exposed to or that has the potential to release oil, hazardous substances, pollutants, or contaminants, that enters a waterway following an acute incident and poses a threat to the natural or man-made environment. This may include shoreline and wetland debris and debris in some inland, non-tidal waterways.

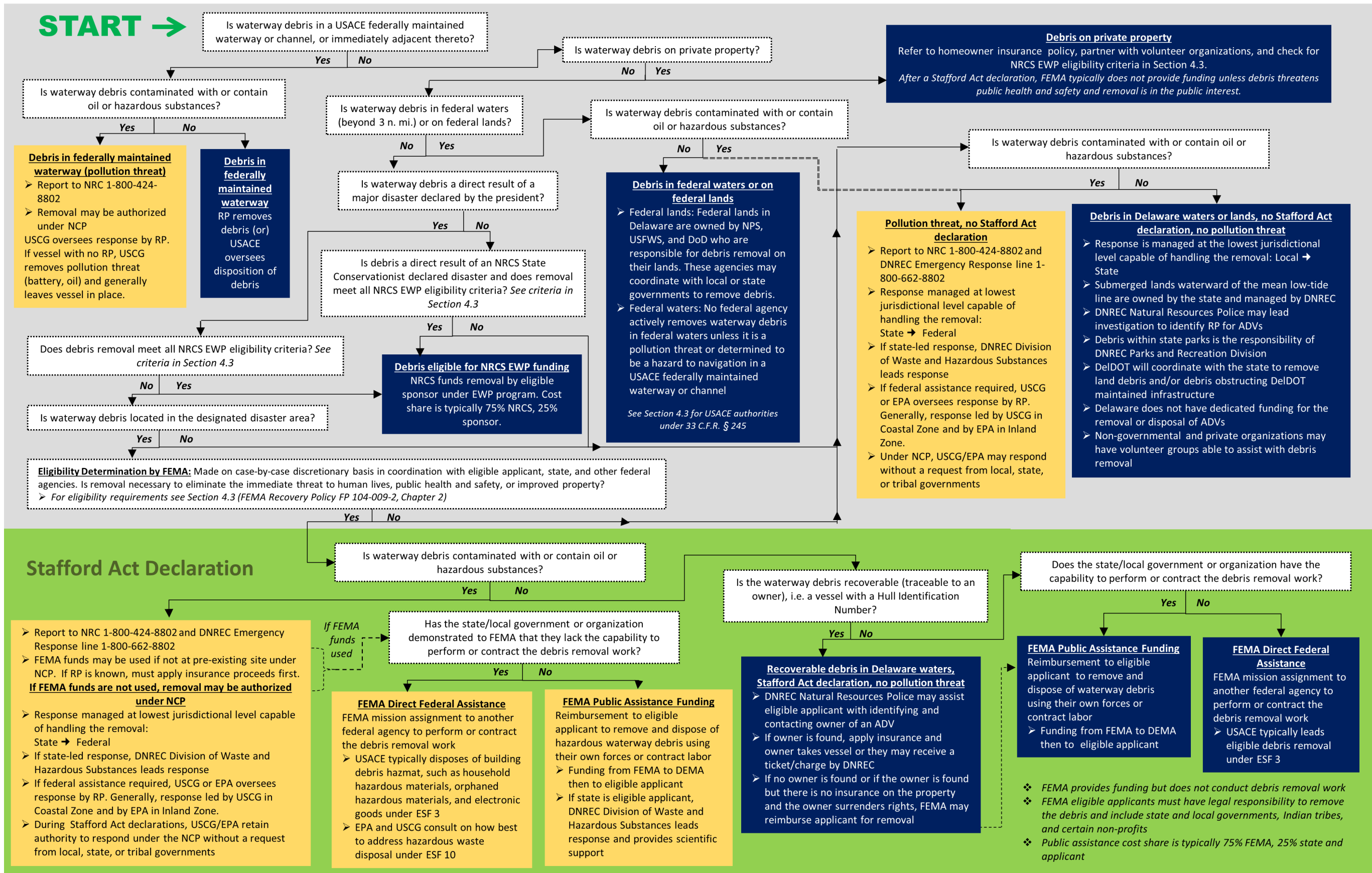
Acronyms

ADV – Abandoned and Derelict Vessel
DelDOT – Delaware Department of Transportation
DEMA – Delaware Emergency Management Agency
DNREC – Delaware Department of Natural Resources and Environmental Control
DoD – U.S. Department of Defense

EPA – U.S. Environmental Protection Agency
ESF – Emergency Support Function
EWP – Emergency Watershed Protection
FEMA – Federal Emergency Management Agency
NCP – National Oil & Hazardous Substance Contingency Plan

NPS – National Park Service
NRC – National Response Center
NRCS – Natural Resources Conservation Service
RP – Responsible Party (Owner, Operator, Lessee)
USACE – U.S. Army Corps of Engineers
USCG – U.S. Coast Guard
USFWS – U.S. Fish and Wildlife Service

Flowchart Key	Response to waterway debris that is exposed to or has the potential to release oil, hazardous substances, pollutants, or contaminants
	Response to waterway debris that is not exposed to and does not have the potential to release oil, hazardous substances, pollutants, or contaminants
	Response occurring under Stafford Act authorities and/or funds



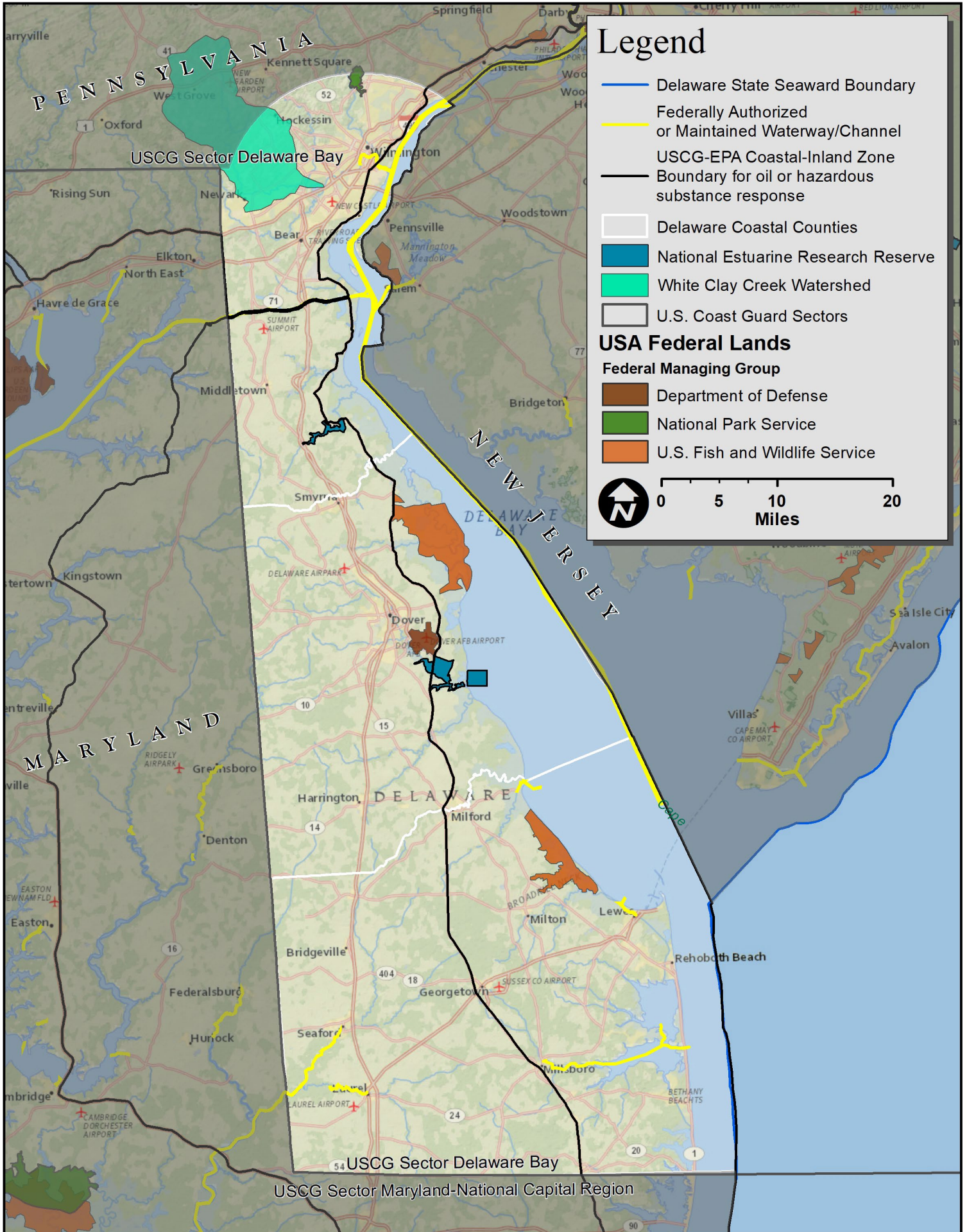
3. Agency Jurisdictions and Capabilities

3.1 Agency Jurisdiction Map

The Delaware Waterway Debris Response Map on the following page displays relevant agency jurisdiction boundaries in Delaware. After an acute waterway debris incident, the agency (or agencies) responsible for removing debris will vary depending on where the debris is located. This map includes information that stakeholders identified as important in determining jurisdiction within the state.

3.2 Response Capabilities

Delaware Incident Waterway Debris Response Map



3.2 Response Capabilities

Yes - In-house Capability		FEMA Region III ¹	NOAA ²	USACE	U.S. EPA ⁷	USCG	DEMA ⁸	DNREC Fish & Wildlife	DNREC Parks & Recreation	DE SHPO	DSWA	
Contract - Contracted capability												
Technology	Aerial photography and video	Yes	Cont.	Yes	Yes	Yes		Yes	Cont.			Yes
	Data Processing Software			Yes		Yes						
	Remote Sensing		Contract	Yes		Yes						
	Multi-beam sonar		Contract	Yes	Yes				Yes			
	Side-scan sonar		Contract	Yes	Yes				Yes			
	Single-beam sonar		Contract	Yes	Yes				Yes			
Manpower	Academic expertise/science & technology liaison				Yes	Yes					Yes	
	Compliance and permitting expertise		Yes	Yes	Yes	Yes					Yes	
	Dive support		Contract	Yes ³	Yes	Yes			Yes			
	Environmental expertise (location of sensitive areas and endangered species present, etc.)	Yes	Cont.	Yes	Yes	Yes			Yes	Yes	Yes	
	Geographic Information System (GIS) mapping and plotting of imagery	Yes	Cont.	Yes	Yes	Yes		Yes		Yes		
	Public Affairs trained staff	Yes	Cont.	Yes	Yes	Yes		Yes	Yes	Yes	Yes	
	State tribal representative				Yes	Yes					Yes	
	Volunteer manpower	Yes	Cont.		Yes							Contract
Equipment	Absorbents and solvents for oil cleanup					Contract						
	Aircraft		Contract	Yes		Yes						
	All-terrain vehicles or other vehicles for difficult terrain		Contract			Yes	Cont.		Yes ⁹	Yes		
	Autonomous Underwater Vehicle											
	Barge/Self-loading barge		Contract									
	Ocean Boom											
	Oil Boom		Contract				Contract					

Yes - In-house Capability		FEMA Region III ¹	NOAA ²	USACE	U.S. EPA ⁷	USCG	DEMA ⁸	DNREC Fish & Wildlife	DNREC Parks & Recreation	DE SHPO	DSWA
Contract - Contracted capability											
Equipment (Cont.)	Crane/knuckleboom crane	Contract			Contract						
	Dredge			Yes Cont.	Contract						
	Excavator	Contract		Yes	Contract						
	Ground Penetrating Radar				Contract				Yes		
	In-situ burning										
	Remotely Operated Vehicle	Contract	Yes								
	Unmanned Aerial Vehicle	Contract	Yes	Yes			Yes ¹⁰	Yes			
	Vessels	Contract	Yes	Yes ⁵	Yes			Yes			
Logistics	Contract authority and oversight capabilities	Yes Cont.	Yes	Yes	Yes		Contract			Yes	
	Disposal location for oiled debris										
	Docks for wet storage of vessels	Contract						Yes	Yes		
	Facility suitable for establishing an Emergency Operations Center (EOC)	Yes Cont.					Yes				
	Funding for waterway debris removal	Yes	Yes ⁴	Yes ⁶							
	Pre-approved waterway debris removal contractors	Contract									
	Pre-designated landfill/disposal sites	Contract									Yes
	Pre-event contracts and staged agreements in place	Contract									
	Staging/Off-Loading: Land with water access to stage, offload debris	Contract									
	Staging/Off-Loading: Pre-designated staging, off-loading and special handling areas	Contract									
Staging area for dry storage of vessels	Yes Cont.							Yes			
Other logistical support including fuel, housing, food, etc.	Yes Cont.						Contract	Yes			

Note: Capabilities which could be used during waterway debris response in Delaware were self-reported by organizations. Organizations were asked to indicate whether capabilities were in-house or were contracted through a third party. Footnotes refer to additional information provided for a particular capability.

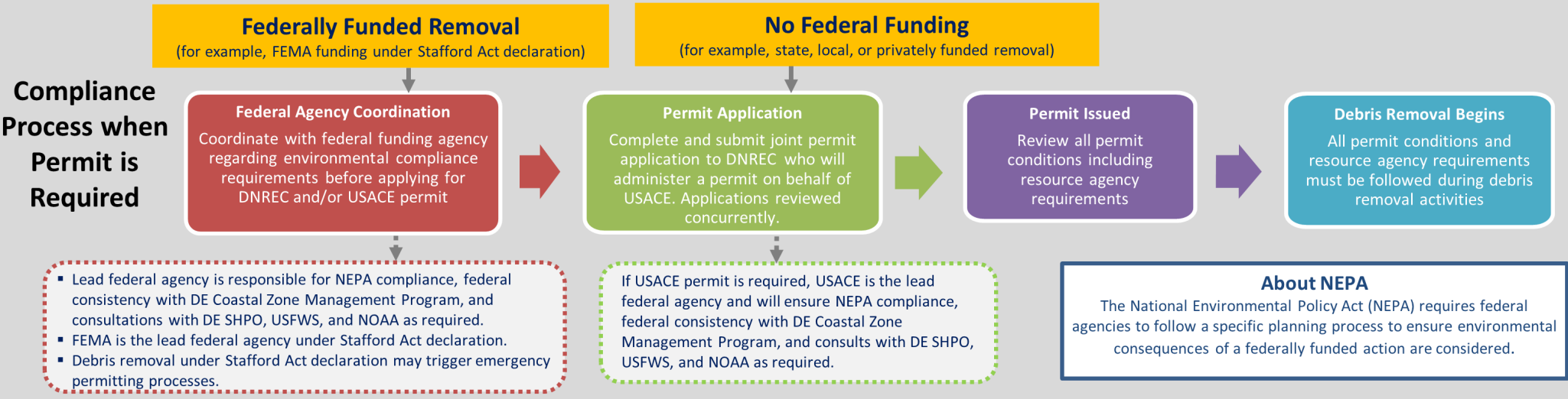
- ¹FEMA Capabilities reported 'Contract' may be contracted out or mission assigned to another federal agency
- ²NOAA Some capabilities require contract support for staffing
- ³NOAA Dive capabilities do not include sites with oil or hazardous pollutants
- ⁴NOAA Funding through grant program and possible Congressional supplemental funding
- ⁵USACE Funding available during federally declared disasters via FEMA mission assignment
- ⁶USACE Survey vessels and one airboat available
- ⁷U.S. EPA EPA does not have statutory authority to respond to debris. EPA has authority to respond to oil and hazardous materials pursuant to and consistent with the National Contingency Plan in the inland zone of the U.S.
- ⁸DEMA DEMA is the lead/primary coordinating agency following a disaster. Resources will be coordinated through the state EOC.
- ⁹DEMA DEMA has one all-terrain vehicle
- ¹⁰DEMA DEMA has three operational, licensed drone pilots on staff and two drones

4. Permitting and Compliance Requirements in Delaware

The Permitting and Compliance for Waterway Debris Removal in Delaware one-pager on the following page synthesizes permitting and compliance requirements that must be met before waterway debris removal operations begin. The top portion of the one-pager outlines the process to follow to stay in compliance, while the bottom portion highlights specific state and federal agency requirements with general contact information.

Permitting and Compliance for Waterway Debris Removal in Delaware

- In Delaware, a Delaware Department Natural Resources and Environmental Control (DNREC) Wetlands and Subaqueous Lands permit and/or a U.S. Army Corps of Engineers (USACE) permit may be required if debris removal involves excavating, dredging, the discharge of fill or dredge material, or involves structures or work impacting navigable waterways or wetlands.
- DNREC and USACE have a joint permit application process. Applicants must apply through DNREC and review will occur concurrently.
- The **lead federal agency** is responsible for compliance with National Environmental Policy Act (NEPA), federal coastal consistency, and consulting with resource agencies including Delaware State Historic Preservation Office (SHPO), U.S. Fish and Wildlife Service (USFWS), and National Oceanic and Atmospheric Administration (NOAA) Fisheries as required.



Agency Requirements and Legislation Details

<p>U.S. Army Corps of Engineers (USACE) Philadelphia District Regulatory Program, Dover Field Office 302-736-9764</p>	<ul style="list-style-type: none"> ▪ Permit(s) that may be required for debris removal work within waterways and wetlands: <ul style="list-style-type: none"> ▪ SPGP-18 for discharge of dredge or fill material, or work and structures such as bulkheads, breakwaters, piers, docks, and pilings ▪ NWP-3 Maintenance for removal/maintenance of culverts, sediments or debris accumulated around outfalls, bridges, etc. in wetland areas ▪ NWP-22 Removal of Vessels for removal of wrecked, abandoned, or disabled vessels or other man-made obstructions to navigation ▪ NWP-33 Temporary Construction, Access, and Dewatering for temporary structures, work, and discharges necessary for construction activities or access fills ▪ NWP-37 Emergency Watershed Protection & Rehabilitation for work done under NRCS's Emergency Watershed Protection program ▪ NWP-38 Cleanup Hazardous/Toxic Waste for containment, stabilization, or removal of hazardous or toxic waste not under Superfund ▪ NWP-45 Repair of Uplands Damaged by Discrete Events for activities associated with the restoration of upland areas damaged by storms, floods, or other discrete events 	<p>DE Department of Natural Resources and Environmental Control (DNREC) Wetlands and Subaqueous Lands Section 302-739-9943</p>	<ul style="list-style-type: none"> ▪ Issues permits for projects that may negatively impact tidal wetlands or tidal and non-tidal waters ▪ A Wetlands and Subaqueous Lands permit may be required for debris removal projects that involve excavating, dredging, the discharge of fill or dredge material, or involves structures or work impacting wetlands. ▪ Permit applications must be submitted through DNREC, who will administer a permit on behalf of USACE
<p>National Oceanic and Atmospheric Administration (NOAA) NOAA Fisheries ESA: 978-281-9306 EFH: 978-281-9102</p>	<ul style="list-style-type: none"> ▪ Consultation required if waterway debris response involves federal permits and/or funding (USACE permit, FEMA funding, etc.) to comply with: <ul style="list-style-type: none"> ▪ Endangered Species Act to ensure actions do not adversely affect listed threatened or endangered species or critical habitat for marine species ▪ Magnuson-Stevens Fisheries Conservation and Management Act to ensure actions do not adversely affect Essential Fish Habitat 	<p>U.S. Fish and Wildlife Service (USFWS) Delaware Bay Estuary Project, Ecological Services Field Office 302-653-9152</p>	<ul style="list-style-type: none"> ▪ Consultation with Ecological Services Field Office required if waterway debris response involves federal permits and/or funding (USACE permit, FEMA funding, etc.) to comply with: <ul style="list-style-type: none"> ▪ Endangered Species Act to ensure actions do not adversely affect listed threatened or endangered species or critical habitat for land and freshwater species and certain marine species such as manatee ▪ Coastal Barrier Resources Act to ensure actions do not encourage development on coastal barriers along the Atlantic coast
		<p>DE Division of Historical and Cultural Affairs State Historic Preservation Office (SHPO) 302-736-7400</p>	<ul style="list-style-type: none"> ▪ Serves as the State Historic Preservation Office (SHPO) and assists state and federal agencies in compliance with the National Historic Preservation Act ▪ Consultation with DE SHPO is required if waterway debris response involves a state or federal agency directly or through funding and/or issuance of permits or licenses (DNREC or USACE permits, FEMA funding, etc.) and has potential to affect historic properties

5. Organization Contact Information

Local Agencies/Organizations

Agency	Division	Topic	Point of Contact	Phone	Email
City of Wilmington	Office of Emergency Management	Emergency Management	Willie J. Patrick, Jr., Director	-	willie.patrick@cj.state.de.us
	Public Works	Debris Management	Rae'nita Shazier, Special Assistant to Commissioner Kelly A. Williams & Public Works Coordinator	302-576-3869 (o) 302-540-1827 (c)	rshazier@wilmingtonde.gov
		Street Cleaning	Preston Foster, Street Cleaning Supervisor	-	pfoster@wilmingtonde.gov
Kent County	Emergency Management	Emergency Management	Colin T. Faulkner, Chief	302-735-2200	colin.faulkner@co.kent.de.us
			Brandon Olenik, Administrative Officer	-	brandon.olenik@co.kent.de.us
New Castle County	Department of Public Safety	Emergency Management	David Carpenter, Director	302-395-2700	david.carpenter@newcastlede.gov
Sussex County	Public Safety	Emergency Operations Center	Joe Thomas, Director	302-855-7801	jthomas@sussexcountyde.gov
			24hr. line	302-855-7803	sussexec@sussexcountyde.gov

State Agencies

Agency	Division	Topic	Point of Contact	Phone	Email
Delaware Department of Agriculture	Animal Health	Emergency Operations	Lisa Tanielian, Management Analyst	302-222-6672	lisa.tanielian@delaware.gov
Delaware Department of Natural Resources and Environmental Control (DNREC) <i>Continued on next page</i>	Climate, Coastal, & Energy	Coastal Management Program	Bob Scarborough, Program Manager II	302-739-9283	bob.scarborough@delaware.gov
		St. Jones National Estuarine Research Reserve	Rachael Phillos, Manager	302-735-3411	rachael.phillos@delaware.gov
	Fish & Wildlife	Natural Resources Police	Douglas Messeck, Captain	302-855-1905	douglas.messeck@delaware.gov
	Parks & Recreation	Cultural Resources	Thomas Summers, Cultural Resources Unit Manager	302-739-9186	thomas.summers@delaware.gov
			Melody Abbott, Archaeologist	302-739-9188	melody.abbott@delaware.gov
		State Parks	James Wagner, Operations Administrator	302-650-3073	james.wagner@delaware.gov
			Michael Krumrine, Planner IV	302-739-9243	michael.krumrine@delaware.gov
Grant Melville, Operations	302-379-9008	grant.melville@delaware.gov			

State Agencies Continued

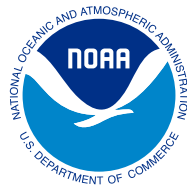
Agency	Division	Topic	Point of Contact	Phone	Email
<i>Continued from previous page</i> Delaware Department of Natural Resources and Environmental Control (DNREC)	Waste & Hazardous Substances	Emergency Prevention and Response	24-hr Line	1-800-662-8802	-
			Jamie Bethard, Chief	302-632-0264	jamie.bethard@delaware.gov
		Environmental Compliance	David Perrego, Senior Environmental Compliance Specialist	302-739-9403	david.perrego@delaware.gov
	Water, Wetlands and Subaqueous Lands Section	Permitting and Compliance	Tyler Brown, Section Manager	302-739-9943	tyler.brown@delaware.gov
	Watershed Stewardship	Shoreline and Waterway Management	Scott Figurski	-	scott.figurski@delaware.gov
Delaware Department of Transportation (DelDOT)	Traffic Operations and Management	Debris Management	Dwayne Day, Homeland Security Planner	302-659-4604	dwayne.day@delaware.gov
			Jeff VanHorn, Asst. Director	302-659-4606	jeffrey.vanhorn@delaware.gov
Delaware Division of Historical and Cultural Affairs	State Historic Preservation Office (SHPO)	Historic and Cultural Preservation	Main Line	302-736-7400	-
			Gwenyth A. Davis, Deputy State Historic Preservation Officer	302-736-7410	gwen.davis@delaware.gov
			Stephanie Soder, RPA, Cultural Preservation Specialist	302-736-7437	stephanie.soder@delaware.gov
Delaware Emergency Management Agency (DEMA)	Planning	Recovery	DEMA Operations/Duty Officer Line	302-734-6040	ops2.dema@delaware.gov
			Leanne VanDerveer, Principal Planner	302-222-6584	leanne.vanderveer@delaware.gov
Delaware Solid Waste Authority (DSWA)	Facility Management	Debris Disposal	Justin Wagner, Facility Manager	302-604-2222	jww@dswa.com
University of Delaware	Delaware Sea Grant	-	Kate Fleming, Coastal Ecology Specialist	302-645-4297	kfleming@udel.edu
			Christopher Petrone, Marine Advisory Service Director	302-645-4308	petrone@udel.edu

Federal Agencies

Agency	Division	Topic	Point of Contact	Phone	Email
Bureau of Safety and Environmental Enforcement	Marine Trash and Debris Program	Planning and Coordination	James Sinclair, Marine Ecologist	504-736-2789	james.sinclair@bsee.gov
Federal Emergency Management Agency (FEMA)	Region III	Recovery Division	Kevin Sheridan, Project Manager	202-445-5061	kevin.sheridan@fema.dhs.gov
		Requests for Assistance for Capabilities	Region III Watch Center	215-931-5757	FEMA-R03-RRCC-WATCH@fema.dhs.gov
National Oceanic and Atmospheric Administration (NOAA)	National Marine Fisheries Service or NOAA Fisheries	EFH Consultation	General Contact	978-281-9102	-
			Keith Hanson, Marine Habitat Resource Specialist	410-573-4559	keith.hanson@noaa.gov
		ESA Consultation	General Contact	978-281-9306	nmfs.gar.esa.section7@noaa.gov
			William Barnhill, Fishery Biologist	978-282-8460	william.barnhill@noaa.gov
	National Ocean Service (NOS) Office of Response and Restoration (ORR) Emergency Response Division	Emergency Response	Frank Csulak, USCG District 5 Scientific Support Coordinator	732-371-1005	frank.csulak@noaa.gov
			John Tarpley, Regional Operations Branch Chief	206-526-6338 (o) 206-459-8638 (c)	john.tarpley@noaa.gov
			Katie Morgan, Mid-Atlantic Regional Coordinator	240-215-7047	katie.morgan@noaa.gov
	NOS, Office of Coast Survey	Navigation and Preparation Response	Ryan Wartick, Navigation and Response Team Regional Manager	571-305-0995	ryan.wartick@noaa.gov
Natural Resources Conservation Service (NRCS)	Emergency Watershed Protection (EWP) Program	EWP Information	Shawn Anderson, Acting EWP Program Manager	202-720-5795	shawn.anderson@wdc.usda.gov
U.S. Army Corps of Engineers (USACE) Philadelphia District	Emergency Management Office	Emergency Management	James V. Monsu, Chief	215-656-6757	james.v.monsu@usace.army.mil
			Robert B. Eckhardt, Emergency Management Specialist	215-656-6756	robert.b.eckhardt@usace.army.mil
	Operations	Operations	Timothy J. Kelly, P.E., Deputy Chief	215-656-6721	timothy.j.kelly@usace.army.mil
	Regulatory Program	Permitting and Compliance	Michael Yost, Biologist	267-240-5278	michael.d.yost@usace.army.mil
U.S. Coast Guard (USCG) District 5	Sector Delaware Bay	Potential to Release Oil or Hazardous Material	National Response Center (NRC)	1-800-424-8802	-
			24-hr Local Emergency Line	215-271-4940	-

Federal Agencies Continued

Agency	Division	Topic	Point of Contact	Phone	Email
U.S. Environmental Protection Agency (EPA)	Region III	Environmental Protection	Bill Steuteville	215-814-3264	steuteville.william@epa.gov
		Potential to release oil or hazardous substance	National Response Center (NRC)	800-424-8802	-
			24-hr Local Emergency Line	215-814-3255	-
U.S. Fish and Wildlife Service (USFWS)	Ecological Services Office	Delaware Bay Estuary Project	Main Line	302-653-9152	R5ES_DPEP@fws.gov



Gina M. Raimondo
United States Secretary of Commerce

Dr. Richard W. Spinrad
Under Secretary of Commerce for Oceans and Atmosphere
and NOAA Administrator

Nicole R. LeBoeuf
Assistant Administrator for Ocean Services
and Coastal Zone Management