



# Louisiana Marine Debris Emergency Response Guide: Field Reference Guide

NOAA Marine Debris Program  
National Oceanic and Atmospheric Administration  
U.S. Department of Commerce  
December 2022

# Table of Contents

<b>1 Introduction</b> .....	<b>2</b>
1.1 Purpose.....	2
1.2 Scope of <i>Guide</i> .....	2
<b>2 Louisiana Marine Debris Response Flowchart</b> .....	<b>3</b>
<b>3 Organization Jurisdictions and Capabilities</b> .....	<b>5</b>
3.1 Louisiana Marine Debris Response Map.....	5
3.2 Response Capabilities .....	7
<b>4 Permitting and Compliance Requirements in Louisiana</b> .....	<b>9</b>
<b>5 Contact Information</b> .....	<b>11</b>

## 1 Introduction

### 1.1 Purpose

This *Field Reference Guide* condenses information contained in the *Louisiana Marine Debris Emergency Response Guide: Comprehensive Guidance Document* to facilitate use during emergency response operations. While the *Comprehensive Guidance Document* serves as a complete reference for marine debris response in Louisiana, the *Field Reference Guide* includes the most pertinent information for quick reference in the field and during times of crisis. Both documents and subsequent versions will be posted on the National Oceanic and Atmospheric Administration (NOAA) Marine Debris Program website at <https://marinedebris.noaa.gov/>.

The purpose of these documents is to improve preparedness for response and recovery following a disaster that generates marine debris in coastal Louisiana. The *Comprehensive Guidance Document* and complementary *Field Reference Guide* outline existing response structures at the local, state, and federal levels to facilitate a coordinated, well-managed, and immediate response to marine debris incidents impacting coastal areas. Organization roles and responsibilities are presented in a consolidated one-page [flowchart](#), which functions as a decision tree for marine debris response. Additionally, organization jurisdictions are presented in a [map](#), which is also available [online](#). The document also includes an overview of permitting and compliance requirements that must be met before debris removal work begins. This information is synthesized in a one-page reference [handout](#).

### 1.2 Scope of *Guide*

The *Guide* addresses both natural and anthropogenic marine debris incidents affecting Louisiana’s coastal areas with a focus on the 20 parishes within the Louisiana coastal zone boundary. In 33 U.S.C. § 1956(3), marine debris is defined as any persistent solid material that is manufactured or processed and directly or indirectly, intentionally or unintentionally, disposed of or abandoned into the marine environment or Great Lakes. Although vegetative debris is not included in the legal definition for marine debris, stakeholders have identified it as a common debris stream of concern

following natural disasters. Therefore, in this document, the term marine debris is used more generally and also includes vegetative material and debris that could be exposed to or release oil, hazardous substances, pollutants, or contaminants that enters a waterway following an acute incident and poses a threat to the natural or built environment. This also includes shoreline and wetland debris and debris in some inland, non-tidal waterways.

## **2 Louisiana Marine Debris Response Flowchart**

The “Louisiana Marine Debris Response Flowchart” provides a visual one-page representation of organization roles and responsibilities. The flowchart functions as a decision tree for marine debris response with color-coded endpoints. Yellow endpoints represent response to debris that could be exposed to or release oil or hazardous substances. Blue endpoints represent response to debris that is not exposed to and does not have the potential to release oil or hazardous substances. Endpoints within the green shaded area indicate that response may occur under Robert T. Stafford Disaster Relief and Emergency Assistance Act (Stafford Act) authorities and/or funding.

The intent of the flowchart is to outline the most likely response structure with the understanding that flexibility is an inherent component of an effective response.

# Louisiana Marine Debris Response Flowchart

## Purpose

The flowchart functions as a decision tree for marine debris response with color-coded endpoints. It is designed to inform response to debris that enters a waterway following a natural or anthropogenic incident and poses a threat to the natural or built environment. This may include shoreline and wetland debris and debris in some inland, non-tidal waterways.

## Acronyms

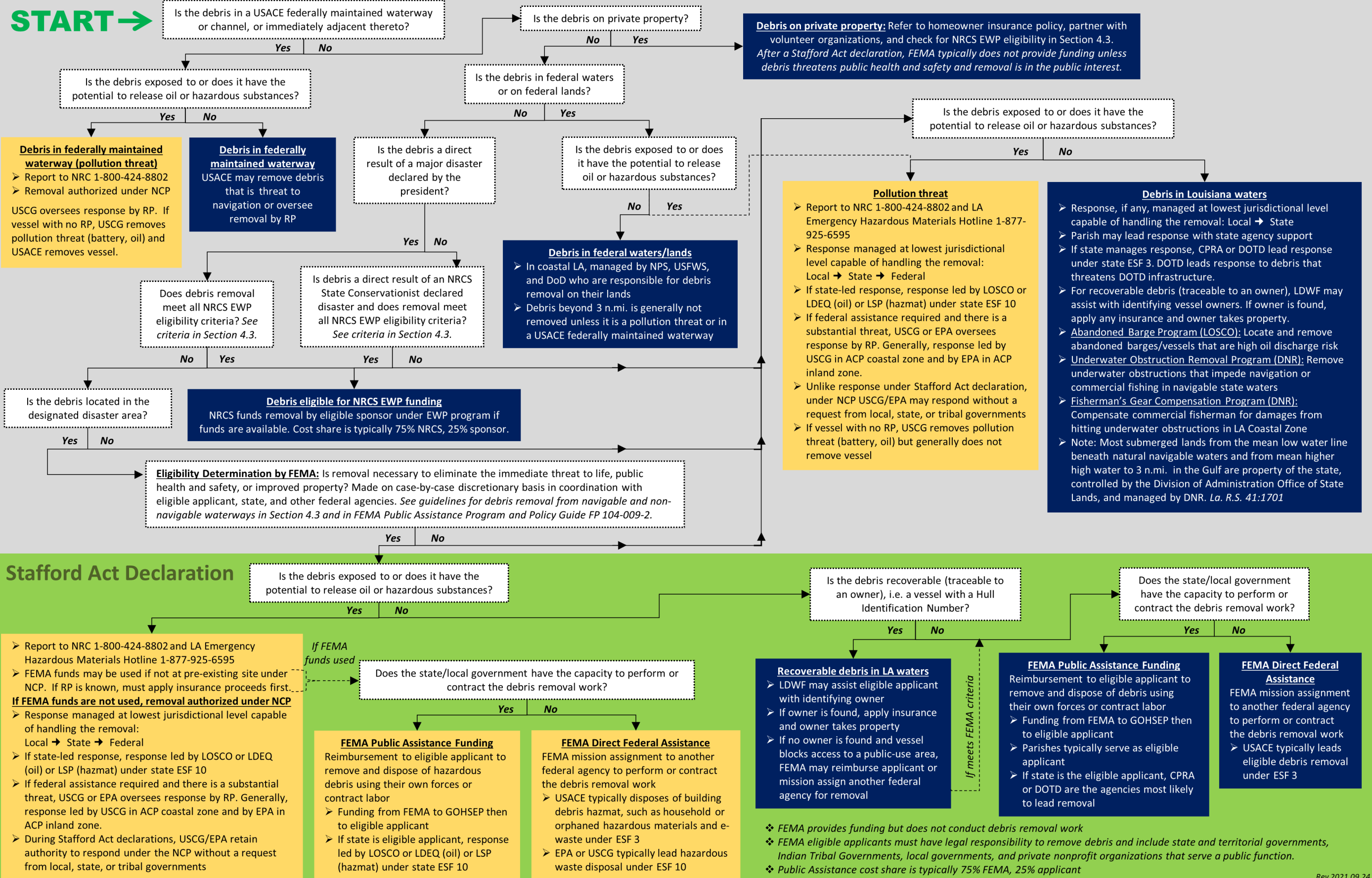
ACP – Area Contingency Plan  
 CPRA – Coastal Protection and Restoration Authority  
 DNR – LA Department of Natural Resources  
 DoD – Department of Defense  
 DOTD – LA Department of Transportation and Development  
 EPA – U.S. Environmental Protection Agency  
 ESF – Emergency Support Function  
 EWP – Emergency Watershed Protection

FEMA – Federal Emergency Management Agency  
 GOHSEP – Governor’s Office of Homeland Security and Emergency Preparedness  
 LDEQ – LA Department of Environmental Quality  
 LDWF – LA Department of Wildlife and Fisheries  
 LOSCO – LA Oil Spill Coordinator’s Office  
 LSP – LA State Police  
 NCP – National Oil and Hazardous Substances Contingency Plan

NPS – National Park Service  
 NRC – National Response Center  
 NRCS – Natural Resources Conservation Service  
 RP – Responsible Party  
 USACE – U.S. Army Corps of Engineers  
 USCG – U.S. Coast Guard  
 USFWS – U.S. Fish and Wildlife Service

## Flowchart Key

- Response to debris that is exposed to or has the potential to release oil or hazardous substances
- Response to debris that is not exposed to and does not have the potential to release oil or hazardous substances
- Response under Stafford Act authorities and/or funds

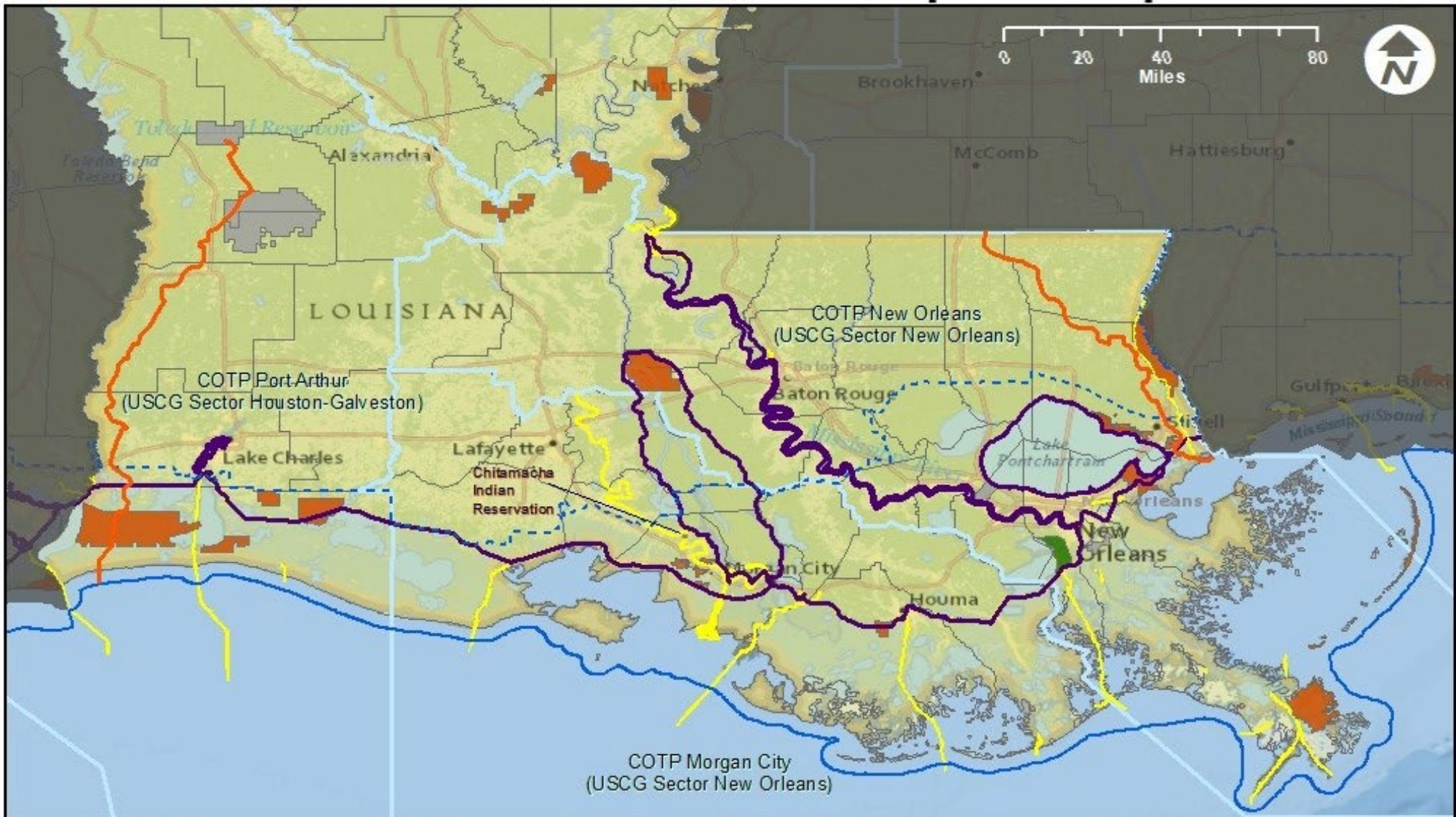


## 3 Organization Jurisdictions and Capabilities

### 3.1 Louisiana Marine Debris Response Map

The “Louisiana Marine Debris Response Map” displays relevant organization jurisdiction boundaries. After a marine debris incident, the agency (or agencies) with jurisdiction and authority for removing debris will vary depending on where the debris is located. This map includes information that stakeholders identified as important in determining jurisdiction within the state. Click the map below to be taken to a dynamic version available [online](#) in NOAA’s Environmental Response Management Application (ERMA).

# Louisiana Marine Debris Response Map



## Legend

### USA Federal Lands

#### Federal Managing Group

- National Parks Service
- Fish and Wildlife Service
- Bureau of Indian Affairs
- Department of Defense

- State Seaward Boundary
- Coastal Zone Management Act Boundary
- Federally Maintained Waterway/Channel (U.S. Army Corps of Engineers, USACE)
- USACE Galveston-New Orleans-Vicksburg Civil Works Boundaries

- U.S. Coast Guard (USCG) Captain of the Port (COTP) Zones
- U.S. Coast Guard-EPA Coastal-Inland Zone Boundary for oil or hazardous substance response
- Louisiana Parishes

### 3.2 Response Capabilities

Yes - Verified In-house Capability		Lafourche Parish	Tangipahoa Parish	Terrebonne Parish OHSEP	Sewerage and Water Board of New Orleans	CPRA <sup>1</sup>	CRT, SHPO	DNR, OCM <sup>2</sup>	DOA, Office of State Lands	LDWF	FEMA Region 6 <sup>5</sup>	NOAA	NPS <sup>9</sup>	NRCS	USACE, New Orleans District <sup>11</sup>		USFWS, Ecological Services Program	
Contract (Contr.) - Contracted capability															Y	C		
Technology	Aerial photography and video	Yes	Yes									Yes			Y	C		
	Remote sensing (LIDAR)											Yes			Contract			
	Sub-Surface Detection: Side scan, Single-beam, or Multi-beam sonar	Yes	Yes			Contract				Yes		Yes			Yes			
Equipment	Aircraft									Yes		Yes						
	Heavy equipment: Barge, Self-loading barge, Crane, Knuckleboom Crane, Environmental clamshell dredge, Excavator				Contract										Yes			
	Remotely Operated Vehicle (ROV)											Yes						
	Unmanned Aerial Vehicle (UAV)/Surveillance drones with FAA trained operator	Yes	Yes									Yes			Yes			
Workforce/Expertise	Vessels		Yes		Yes	Yes		Yes	Yes			Yes	Yes	Yes	Yes	Yes		
	Debris modeling expertise (volume, transport, hindcasting, etc.)	Contract	Contract									Yes						
	Dedicated waterway/marine debris staff (responders, response team, regional coordination, etc.)		Contract			Contract						Yes						
	Dive support (scientific, technical, commercial, etc.)					Contract						Yes			Contract			
	Environmental or cultural resource expertise (location of sensitive areas, endangered species present, etc.)		Yes		Yes	Yes	Yes	Yes		Yes	Yes	Yes <sup>7</sup>	Yes		Yes		Yes	
	Geographic Information System (GIS) mapping and plotting of imagery	Yes	Yes	Yes	Yes	Contract	Yes	Yes			Yes	Yes	Yes	Yes	Yes	Y	C	
	Incident Command System (ICS) trained staff	Yes	Yes	Yes	Yes	Yes				Yes	Yes	Yes	Yes	Yes	Yes	Yes		
	Legal assistance	Yes	Yes		Yes	Yes				Yes						Yes		
	Public outreach processes in place	Yes	Yes	Yes	Yes	Yes				Yes			Yes	Yes	Yes	Yes		
	Technical expertise for removal operations (techniques, best management practices, etc.)	Contract	Contract		Yes	Contract	Yes				Yes	Yes		Yes				
Logistics	Volunteer manpower/Volunteer coordination		Yes	Yes					Yes				Yes					
	Contracting: Pre-approved marine debris removal contractors	Contract	Contract							Yes								
	Contracting: Pre-event contracts and staged agreements in place	Contract	Contract															
	Docks for wet storage of vessels		Yes															

Yes - In-house Capability		Lafourche Parish	Tangipahoa Parish	Terrebonne Parish OHSEP	Sewerage and Water Board of New Orleans	CPRA <sup>1</sup>	CRT, SHPO	DNR, OCM <sup>2</sup>	DOA, Office of State Lands	LDWF	FEMA Region 6 <sup>5</sup>	NOAA	NPS <sup>9</sup>	NRCS	USACE, New Orleans District <sup>11</sup>	USFWS, Ecological Services Program
Contract - Contracted capability																
Logistics	Funding for marine debris removal							- <sup>3</sup>			Yes <sup>6</sup>	Yes <sup>8</sup>		Yes <sup>10</sup>	Yes	
	Process or team in place to identify responsible parties (for debris that can be traced to an owner)	Yes						Yes <sup>4</sup>							Yes	
	Staging/Off-Loading: Land with water access to stage, offload debris (has not been evaluated for suitability or officially pre-designated)		Yes	Yes						Yes			Yes		Yes	
	Staging/Off-Loading: Pre-designated (pre-approved) staging, off-loading and special handling areas (already evaluated for suitability)	Contract	Yes										Yes			

Note: Capabilities which could be used during marine debris response in Louisiana were either identified through research or were self-reported by an organization. Organizations were asked to indicate whether capabilities were in-house or were contracted through a third party. Footnotes refer to additional information provided for a particular capability.

- <sup>1</sup>CPRA For capabilities that are not in-house, CPRA could potentially contract for them as part of ESF 3 support to the state's response.
- <sup>2</sup>DNR Potentially has permitting authority over all marine debris removal activities occurring in the LA coastal zone.
- <sup>3</sup>DNR Office of Conservation manages the Underwater Removal Obstruction Fund.
- <sup>4</sup>DNR For debris related to an Office of Coastal Management permitted activity in the LA coastal zone, may be able to identify an obstruction using database of permitted projects, which includes flowlines/pipelines and other activities.
- <sup>5</sup>FEMA Capabilities contingent upon a Presidential major disaster declaration. FEMA capable of mission-assigning other federal support to increase capabilities.
- <sup>6</sup>FEMA May provide reimbursement Public Assistance funding for eligible debris removal during Presidential major disaster declarations when another federal agency does not have authority to fund the activity.
- <sup>7</sup>NOAA Coordinates marine mammal and sea turtle stranding response and reviews proposed debris removal activities for compliance with ESA and Magnuson-Stevens Fisheries Conservation and Management Act.
- <sup>8</sup>NOAA Funding through grant program and possible Congressional supplemental funding.
- <sup>9</sup>NPS Capabilities are subject to support from park management.
- <sup>10</sup>NRCS When funding is available, provides emergency financial and technical assistance through the EWP Program eligible projects.
- <sup>11</sup>USACE Other USACE districts may have additional capabilities. Funding, when available, for federal projects only.



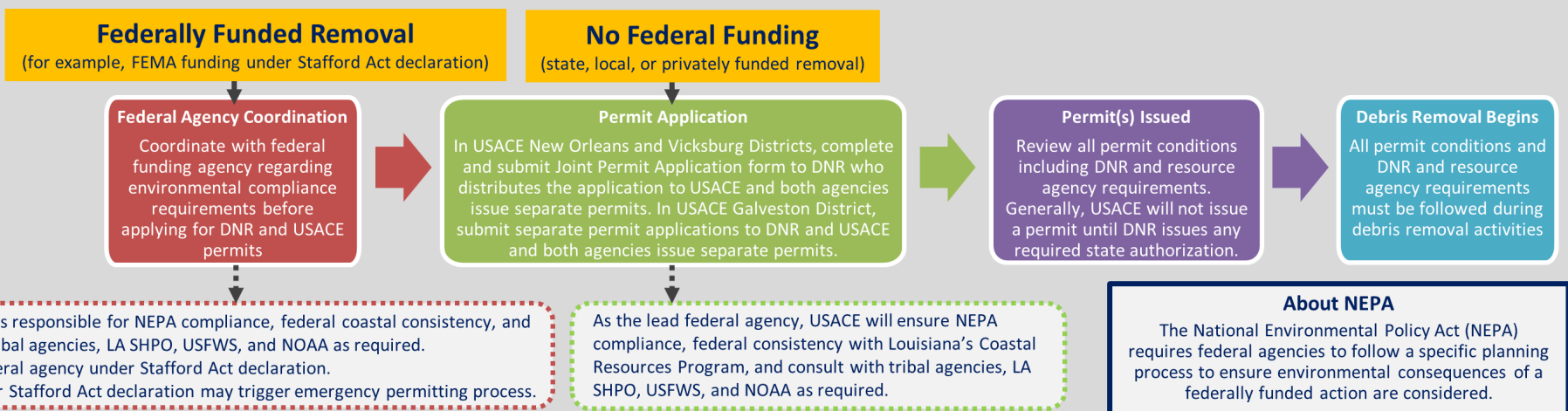
## **4 Permitting and Compliance Requirements in Louisiana**

The “Permitting and Compliance for Marine Debris Removal in Louisiana” handout on the following page synthesizes permitting and compliance requirements that must be met before debris removal operations begin. The top portion of the handout outlines the process to follow to stay in compliance, while the bottom portion highlights specific state and federal agency requirements with general contact information.

# Permitting and Compliance for Marine Debris Removal in Louisiana

- In Louisiana's Coastal Zone, a LA Department of Natural Resources (DNR) Coastal Use Permit and/or U.S. Army Corps of Engineers (USACE) permit may be required if debris removal involves dredging, the discharge of dredged or fill material, or involves structures or work impacting those waters or wetlands.
- DNR and USACE New Orleans and Vicksburg Districts have a joint permit application process. Applications in Galveston District must be submitted to USACE and DNR separately.
- The **lead federal agency** is responsible for compliance with National Environmental Policy Act (NEPA), federal coastal consistency, and consulting with tribal and resource agencies including Louisiana State Historic Preservation Office (SHPO), U.S. Fish and Wildlife Service (USFWS), and the National Oceanic and Atmospheric Administration (NOAA) as required.

## Compliance process when permit is required



## Agency Requirements and Contact Numbers

**LA Department of Natural Resources (DNR)**  
  
**Office of Coastal Management**  
800-267-4019

- Serves as the initial agency to submit a permit application in Louisiana's Coastal Zone (for USACE New Orleans and Vicksburg Districts). In a parish with an approved Local Coastal Management Program, may submit to either the parish or to DNR.
- Coastal Use Permit may be required if the activity involves dredging, the discharge of dredge or fill material, or involves structures or work impacting the navigability of a waterway
- DNR forwards permit application to appropriate agencies including USACE Regulatory Office (in New Orleans and Vicksburg Districts) if required

**LA Department of Culture, Recreation and Tourism**  
  
**LA State Historic Preservation Office (SHPO)**  
225-342-8200

- Serves as the State Historic Preservation Office and ensures compliance with National Historic Preservation Act
- Consultation with LA SHPO required if debris response involves federal permits and/or funding (USACE permit, FEMA funding, etc.) to evaluate whether activities affect historic or cultural sites included in or eligible for the National Register of Historic Places
- Reviews proposed federally funded or permitted debris removal activities for impacts to archaeological properties, above-ground structures, and cultural resources

**U.S. Army Corps of Engineers (USACE)**  
**Regulatory Offices**  
**New Orleans District**  
504-862-2255  
  
**Vicksburg District**  
601-631-7071  
  
**Galveston District**  
409-766-3869

- In LA Coastal Zone, USACE New Orleans and Vicksburg Districts have a joint permit application process with DNR
- Some permits that may be required for debris removal in waterways and wetlands
  - **NWP-3 Maintenance** for removal/maintenance of culverts, sediments or debris accumulated around outfalls, bridges, etc.
  - **NWP-18 Minor Discharges** of dredge or fill material
  - **NWP-19 Minor Dredging** of no more than 25 cubic yards
  - **NWP-22 Removal of Vessels** for removal of wrecked, abandoned, or disabled vessels or other man-made obstructions to navigation
- Other USACE offices may review permit applications, such as when activities intersect with federally maintained waterways, including levee systems

**National Oceanic and Atmospheric Administration (NOAA)**  
  
**NOAA Fisheries**  
ESA: 727-824-5312  
EFH: 409-766-3699

- Consultation required if debris response involves federal permits and/or funding (USACE permit, FEMA funding, etc.) to comply with:
  - Endangered Species Act (ESA) to ensure actions do not jeopardize the continued existence of any listed endangered or threatened marine species or adversely modify designated critical habitat
  - Magnuson-Stevens Fisheries Conservation and Management Act to ensure actions do not adversely affect Essential Fish Habitat (EFH)

**LA Department of Environmental Quality (LDEQ)**  
**Water Permits Division**  
225-219-3225

- Conducts water quality certifications and reviews federal permit applications for impacts to wetlands, streams, and open waters
- Provides emergency debris removal, management, and disposal guidance
- Pre-approves emergency disaster debris sites and authorizes the siting and operation of temporary emergency debris management sites

**U.S. Fish and Wildlife Service (USFWS)**  
  
**LA Ecological Services Field Office**  
337-291-3100

- Consultation required if debris response involves federal permits and/or funding (USACE permit, FEMA funding, etc.) to comply with:
  - Endangered Species Act (ESA) to ensure actions do not adversely modify designated critical habitat or jeopardize the continued existence of any listed endangered or threatened land or freshwater species and certain marine species such as manatee
  - Coastal Barrier Resources Act to ensure actions do not encourage development on coastal barriers along Louisiana's coast

## 5 Contact Information

### Local Agencies

Note: Contact information is only included for those local organizations who have provided and/or approved information in the following table. A complete list of parish OHSEP points of contact can be found at the web address in the first entry.

Agency	Division	Topic	Point of Contact	Phone	Email
Parish Office of Homeland Security and Emergency Preparedness (OHSEP)	-	-	See <a href="http://gohsep.la.gov/ABOUT/PARISHPA">http://gohsep.la.gov/ABOUT/PARISHPA</a> for a complete list of parish contacts	-	-
Cameron Parish OHSEP	-	Planning and coordination	Danny Lavergne, Director	337-775-7048	oep@cameronpj.org
Iberia Parish OHSEP	-	Planning and coordination	Prescott Marshall, Director	337-369-4427	pmarshall@iberiagov.net
Lafourche Parish	-	Capability contacts	Chris Boudreaux	985-537-7603	chrisb@lafourchegov.org
			Sam Shaklin	985-537-7603	shanklinsd@lafourchegov.org
			Eric Benoit	985-537-7603	benoitteg@lafourchegov.org
St. Bernard Parish OHSEP	-	Planning and Coordination	John Rahaim, Director	504-442-1040	jrahaim@sbgp.net
St. Mary Parish	-	Planning and coordination	David Naquin, Director of OHSEP	337-828-4100 x 135	dnaquin@stmaryparishla.gov
Tangipahoa Parish OHSEP	-	Capability contact	Dawson Primes LEM	985-974-7977	dprimes@tangipahoa.org
		Capability contact (sonar)	CPT Stuart Murphy	985-969-4201	murphys@tpso.org
		Capability contact (drone)	Chief Bruce Cutrer	985-969-6040	-
Terrebonne Parish OHSEP	-	Capability contact	Earl Eues	985-873-6357	eeues@tpcg.org
City of New Orleans	New Orleans Office of Homeland Security & Emergency Preparedness (NOHSEP)	Planning and coordination	Collin Arnold, Director	504-658-8729 (O) 504-655-0110 (C)	cmarnold@nola.gov
	Sewerage and Water Board of New Orleans	Emergency management (ICS trained staff)	Jason Higginbotham	504-218-3235	jhigginbotham@swbno.org
		Engineering (technical expertise for removal operations)	Ron Spooner	504-433-3888	rspooneer@swbno.org
		Information System GIS Team (GIS)	Melinda Nelson	504-218-3612	mnelson@swbno.org
		Legal (legal assistance)	Yolanda Grinstead	504-270-7556	ygrinstead@swbno.org

## State Agencies

Agency	Division	Topic	Point of Contact	Phone	Email
Governor's Office of Homeland Security and Emergency Preparedness (GOHSEP)	Public Assistance	Planning and coordination	Lynne Browning, Assistant Deputy Director	225-338-7342	lynne.browning@la.gov
			Daniel Crothers, Section Chief, Public Assistance Technical Services	225-267-2761	daniel.crother@la.gov
			James Richard, Senior Resolution Officer as Debris SME	225-315-7227	james.richard2@la.gov
	Regional Coordination	Region 1	Norman Pineda	225-636-1629	norman.pineda@la.gov
		Region 2	Jacie Maples	225-324-4910	jacie.maples@la.gov
		Region 3	Ashley Beetz	985-316-8950	ashley.beetz@la.gov
		Region 4	Darren Guidry	225-614-7050	darren.guidry@la.gov
		Region 5	Jonathan McLemore	337-853-9933	jonathan.mclemore@la.gov
Training and Exercise Branch	Exercises	Christopher Guilbeaux, Assistant Deputy Director, Preparedness, Response & Interoperability	225-715-3191	christopher.guilbeaux@la.gov	
Disaster Recovery Legal Services	Legal	Clayton Revere	225-281-0508	gohseplegal@la.gov	
LA Coastal Protection and Restoration Authority (CPRA)	-	Planning and coordination	Sam Martin, Executive Management Officer	225-342-9025	sam.martin@la.gov
LA Department of Culture, Recreation and Tourism (CRT)	-	-	Lt. Governor Billy Nungesser	225-342-7009	ltgov@crt.la.gov
	LA State Historic Preservation Office (SHPO, Office of Cultural Development)	National Historic Preservation Act compliance, capability contact	-	225-342-8200	section106@crt.la.gov
			Chip McGimsey, LA State Archeologist	225-219-4598 (O) 225-454-9274 (C)	cmcgimsey@crt.la.gov
	Office of State Parks	Response in state parks	Rachel Watson	225-342-8165	rwatson@crt.la.gov
			Ray Berthelot	225-342-8128	rberthelot@crt.la.gov
			Richard Parker, District 1 Manager Southeast Region	985-624-4618	district1_dm@crt.la.gov
LA Department of Environmental Quality (LDEQ)	Office of Environmental Compliance, Emergency and Radiological Services	Report oiled or hazardous substances to LDEQ	24 Hour Emergency Response Hotline	225-342-1234 888-763-5424 (toll free)	-
		Planning and Coordination	Daniel Lambert, Senior Environmental Scientist	225-219-3328	daniel.lambert@la.gov
	Office of Environmental Services, Waste Permits Division	Debris management and disposal	Kimberly Carter, Environmental Scientist	225-219-3891	kimberly.carter@la.gov
			Karla Vidrine, Senior Environmental Scientist	225-219-3047	karla.vidrine@la.gov
	Office of Environmental Services, Water Permits Division	Water Quality Certification	Elizabeth Hill	225-219-3225	elizabeth.hill@la.gov

## State Agencies Continued

Agency	Division	Topic	Point of Contact	Phone	Email
LA Department of Natural Resources (DNR)	Office of Coastal Management	Fisherman's Gear Compensation Program	Jordan Cobbs, Coastal Resources Scientist	225-342-7268	jordan.cobbs2@la.gov
	Office of Coastal Management, Permits and Mitigation Division	Coastal Use Permitting	-	800-267-4019	-
			Christine Charrier, Coastal Resources Manager	225-342-7953	christine.charrier@la.gov
Office of Conservation	Underwater Obstruction Removal Program	Matt Simon	225-342-6089	matt.simon@la.gov	
LA Department of Public Safety and Corrections (DPS)	LA State Police (LSP)	Report emergency incidents, including oiled or hazardous substances	LA Emergency Hazardous Materials Hotline	877-925-6595	-
LA Department of Transportation and Development (DOTD)	-	ESF 3 Public Works and Engineering lead	Billy Douglas	225-379-1165	billy.douglas@la.gov
		-	Skip Breden, Director Emergency Operations	225-379-1898	skip.breden@la.gov
LA Department of Wildlife and Fisheries (LDWF)	Office of Fisheries	Planning and Coordination	Ty Lindsey	225-765-2387	tlindsey@wlf.la.gov
	Office of Wildlife	Planning and Coordination	Matthew Weigel	985-543-4931	mweigel@wlf.la.gov
		Activities impacting waters of the U.S. and/or wetlands	Dave Butler, Permits Coordinator	504-286-4173	dbutler@wlf.la.gov
		LA Scenic Rivers information	Chris Davis, Scenic Rivers Coordinator	225-765-2642	rcdavis@wlf.la.gov
LA Division of Administration (DOA)	Office of State Lands, Land and Waterbottom Management Section	Identification and management of state public lands and water bottoms	Les Rosso, Section Manager	225-342-4600	les.rosso@la.gov
	Office of State Lands	Capability contact	Cheston Hill, Public Lands Administrator	225-219-9454	cheston.hill@la.gov
LA Sea Grant	Law and Policy Program	Planning and Coordination	Melissa Daigle, Research Associate	225-578-9968	mtrosc2@lsu.edu
			Niki Pace, Sustainability Coordinator	225-578-6342	nlpace@lsu.edu

## Federal Agencies

Agency	Division	Topic	Point of Contact	Phone	Email
Bureau of Safety and Environmental Enforcement	Marine Trash and Debris Program	Planning and coordination	James Sinclair, Marine Ecologist	504-736-2789	james.sinclair@bsee.gov
Federal Emergency Management Agency (FEMA)	Region 6	Funding following Presidential disaster declaration	Contact parish OHSEP. See <a href="http://gohsep.la.gov/ABOUT/PARISHPA">http://gohsep.la.gov/ABOUT/PARISHPA</a> for a complete list of contacts.	-	-
		Environmental and Historic Preservation	Sarah Carrino, Regional Unified Federal Review Coordinator	202-733-7908 (C)	sarah.carrino@fema.dhs.gov
			Kevin Jaynes, Regional Environmental Officer	940-230-5126 (C)	kevin.jaynes@fema.dhs.gov
		Public Assistance	Don Simko, Public Assistance Branch Chief	202-322-9591	donald.simko@fema.dhs.gov

## Federal Agencies Continued

Agency	Division	Topic	Point of Contact	Phone	Email
National Oceanic and Atmospheric Administration (NOAA)	National Marine Fisheries Service (NMFS or NOAA Fisheries)	Emergency ESA/EFH consultation	-	-	nmfs.ser.emergency.consult@noaa.gov
		EFH information	David Dale	727-551-5736	david.dale@noaa.gov
			Rusty Swafford	409-766-3699	rusty.swafford@noaa.gov
		ESA information	General Contact, Routine ESA Consultation	727-824-5312	-
	Joe Cavanaugh, Consultation Biologist		-	joseph.cavanaugh@noaa.gov	
	National Ocean Service (NOS), Office of Coast Survey	Navigation preparation and response	Tim Osborn, Regional Navigation Manager – Central Gulf Coast	337-291-2111	tim.osborn@noaa.gov
	NOS, Office of National Marine Sanctuaries, Flower Garden Banks National Marine Sanctuary	Planning and coordination	George P. Schmahl, Sanctuary Superintendent	409-356-0383	george.schmahl@noaa.gov
	NOS, Office of Response and Restoration, Emergency Response Division	Potential to release oil or hazardous substance	Brandi Todd, Scientific Support Coordinator for USCG Sector New Orleans and MSU Houma	504-376-3213	brandi.todd@noaa.gov
			Dr. Paige Doelling, Scientific Support Coordinator for U.S. Coast Guard Sector Houston-Galveston	206-549-7819	paige.doelling@noaa.gov
	NOS, Office of Response and Restoration, Marine Debris Program	Planning and coordination for marine debris issues	Caitlin Wessel, Gulf of Mexico Regional Coordinator	251-544-5013 (O) 251-222-0276 (C)	caitlin.wessel@noaa.gov
National Park Service (NPS)	Jean Lafitte National Historical Park and Preserve	Response in Jean Lafitte National Historical Park and Preserve	Guy Hughes, Chief, Resource Management	504-512-2558	guy_hughes@nps.gov
		Capability contact (ICS trained staff)	Leslie Wells, Supervisory Ranger	504-382-0325	leslie_wells@nps.gov
		Capability contact (vessels)	John Herrod	504-382-0301	john_herrod@nps.gov
		Capability contact (public outreach)	Kristy Wallisch, PIO	504-382-0296	kristy_wallisch@nps.gov
	-	Response on NPS-owned lands	C. Anna Toline, Marine Scientist, Oceans Program Coordinator	843-518-1939	catherine_toline@nps.gov
Natural Resources Conservation Service (NRCS)	-	Emergency Watershed Protection (EWP) Program Information	Britt Paul, Assistant State Conservationist for Water Resources	318-473-7756	britt.paul@la.usda.gov
			Alton James, Natural Resources Specialist	985-331-9084 x 3349	alton.james@la.usda.gov
U.S. Army Corps of Engineers (USACE)  <i>Continued on next page</i>	Emergency Management	New Orleans District	Heath Jones, Chief Emergency Management	504-862-2426	heath.e.jones@usace.army.mil
		Galveston District	Alicia Rea, Chief Emergency Management	409-766-3995	alicia.d.rea@usace.army.mil
		Vicksburg District	Donald Walker, Chief Emergency Management	601-631-5367	donald.s.walker@usace.army.mil
			James (Jay) Keen, Emergency Management Specialist	601-631-7320	james.d.keen@usace.army.mil
		Memphis District	Steve Barry	-	steven.l.barry@usace.army.mil
		Mississippi Valley Division	Matt Tate, Debris Program Manager	251-802-2011	jacob.m.tate@usace.army.mil

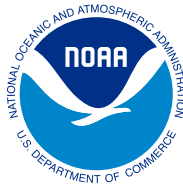
## Federal Agencies Continued

Agency	Division	Topic	Point of Contact	Phone	Email
Continued from previous page  U.S. Army Corps of Engineers (USACE)	Navigation and River Operations	New Orleans District – Federally maintained waterway or channel	Jane Brown, Asst. Operations Manager	504-862-1297	jane.l.brown@usace.army.mil
			Ray Newman, Operations Manager, SE Waterways	504-862-2050	raymond.c.newman@usace.army.mil
			Amy Powell, Operations Manager, Completed Works	504-862-2241	amy.e.powell@usace.army.mil
			Renee Scholl, Lead Engineer CEMVN Wrecks and Obstructions	504-862-1080	renee.s.scholl@usace.army.mil
		Galveston District – Federally maintained waterway or channel	Christopher Frabotta, Chief of Navigation	-	christopher.c.frabotta@usace.army.mil
		Vicksburg District – Federally maintained waterway or channel	Chad Bounds, Chief of Navigation	-	chad.r.bounds@usace.army.mil
			Joel Brown, Chief of River Operations	-	joel.t.brown@usace.army.mil
	Neal Lewis, Section 14 (408) Review Team Lead		-	neal.lewis@usace.army.mil	
	Regulatory Program	New Orleans District – Compliance and permitting	Martin Mayer, Chief Regulatory Branch	504-862-2255	martin.s.mayer@usace.army.mil
		Galveston District – Compliance and permitting	-	409-766-3869	ceswgregulatoryInbox@usace.army.mil
Vicksburg District – Compliance and permitting		-	601-631-7071	regulatory@usace.army.mil	
U.S. Coast Guard (USCG)	-	Report potential to release oil or hazardous substance	National Response Center (NRC)	800-424-8802	-
	District 8	Planning and coordination	Dee Oos, Area Contingency Plan Program Manager	504-671-2233	damara.a.oos@uscg.mil
			Mike Sams, Incident Management Preparedness Advisor	504-671-2234	michael.k.sams@uscg.mil
			Adam Tyndale, Response Equipment Coordinator	504-671-2063	adam.j.tyndale@uscg.mil
			District Response Advisory Team (DRAT) Supervisor	504-589-6225	-
	District 8, Sector New Orleans	Capability contact	USCG Sector New Orleans Command Center	504-365-2545	-
		Contingency Planning	LT Seth Gross	504- 605-5084	seth.w.gross@uscg.mil
		Incident Management	LCDR Amber Larson, Chief Incident Management	504-365-2417	SECNOLAIMD@uscg.mil
		Waterways Management	LCDR William Stewart, Chief Waterways Management	504-365-2280	SECNOLA-WPM@uscg.mil
	District 8, Sector New Orleans, COTP Houma	Capability contact	USCG Sector New Orleans, MSU Houma OOD	985-397-3277	-
District 8, Sector Houston-Galveston	Capability contact	USCG Sector Houston-Galveston Command Center	281-464-4840	-	
U.S. Environmental Protection Agency (EPA)	Region 6	Report potential to release oil or hazardous substance	National Response Center (NRC)	800-424-8802	-
		Capability contact	EPA Region 6 Duty Officer	866-372-7745	-

## Federal Agencies Continued

Agency	Division	Topic	Point of Contact	Phone	Email	
U.S. Fish and Wildlife Service (USFWS)	National Wildlife Refuges (NWR)	Response in Southeast LA NWR Complex	Jimmy Laurent, Regional Energy Coordinator	985-882-2031	jimmy_laurent@fws.gov	
		Southeast LA NWR Oil and Gas Specialist	Chelsea Stringfield	985-882-2040	chelsea_stringfield@fws.gov	
		Response in Southwest LA NWR Complex	Patrice Betz	-	patrice_betz@fws.gov	
	Louisiana Ecological Services Field Office	Compliance and permitting	-	-	337-291-3100	lafayette@fws.gov
			Amy Trahan, Fish and Wildlife Biologist	-	337-291-3126	amy_trahan@fws.gov





Gina M. Raimondo  
United States Secretary of Commerce

Dr. Richard W. Spinrad  
Under Secretary of Commerce for Oceans and Atmosphere  
and NOAA Administrator

Nicole R. LeBoeuf  
Assistant Administrator for Ocean Services  
and Coastal Zone Management