



# Mississippi Marine Debris Emergency Response Guide: Field Reference Guide

NOAA Marine Debris Program  
National Oceanic and Atmospheric Administration  
U.S. Department of Commerce  
December 2022

# Table of Contents

<b>1 Introduction .....</b>	<b>2</b>
1.1 Purpose .....	2
1.2 Scope of Guide .....	2
<b>2 Mississippi Waterway Debris Response Flowchart .....</b>	<b>3</b>
<b>3 Organization Jurisdictions and Capabilities .....</b>	<b>5</b>
3.1 Mississippi Waterway Debris Response Map .....	5
3.2 Response Capabilities .....	7
<b>4 Permitting and Compliance Requirements in Mississippi .....</b>	<b>10</b>
<b>5 Contact Information .....</b>	<b>12</b>

## 1 Introduction

### 1.1 Purpose

This *Field Reference Guide* condenses information contained in the *Mississippi Marine Debris Emergency Response Guide: Comprehensive Guidance Document (Guide)* to facilitate use during emergency response operations. While the *Comprehensive Guidance Document* serves as a complete reference for waterway debris response in Mississippi, the *Field Reference Guide* includes the most pertinent information for quick reference in the field and during times of crisis. Both documents and subsequent versions will be posted on the NOAA Marine Debris Program website at <https://marinedebris.noaa.gov/>.

The purpose of these documents is to improve preparedness for response and recovery operations following an acute waterway debris incident in coastal Mississippi. The term acute waterway debris incident is used to describe an incident—either natural or anthropogenic—that results in the release of large amounts of waterway debris. The *Comprehensive Guidance Document* and complementary *Field Reference Guide* outline existing response structures at the local, state, and federal levels to facilitate a coordinated, well-managed, and immediate response to waterway debris incidents impacting the state of Mississippi. Organization roles and responsibilities are presented in a consolidated one-page [flowchart](#) which functions as a decision tree for waterway debris response. Additionally, organization jurisdictions are presented in a [map](#), which is also available [online](#). The document also includes an overview of permitting and compliance requirements that must be met before debris removal work begins. This information is synthesized in a one-page reference [handout](#).

### 1.2 Scope of Guide

The *Comprehensive Guidance Document* and *Field Reference Guide* address potential acute waterway debris incidents affecting Mississippi’s coastal areas with a focus on Hancock, Harrison, and Jackson counties. Throughout these documents, the term waterway debris is used in lieu of the term marine debris. In 33 U.S.C. § 1956(3), marine debris is defined as any persistent solid material that is

manufactured or processed and directly or indirectly, intentionally or unintentionally, disposed of or abandoned into the marine environment or Great Lakes. Although vegetative debris is not included in the legal definition for marine debris, stakeholders have identified it as a common debris stream of concern following natural disasters. To account for both marine debris and vegetative debris in this document, the term waterway debris is used and includes any solid material, including but not limited to vegetative debris and debris exposed to or that has the potential to release oil, hazardous substances, pollutants, or contaminants, that enters a waterway following an acute incident and poses a threat to the natural or man-made environment. This may include shoreline and wetland debris and debris in some inland, non-tidal waterways.

## **2 Mississippi Waterway Debris Response Flowchart**

The “Mississippi Waterway Debris Response Flowchart” on the following page provides a visual one-page representation of organization roles and responsibilities. The flowchart functions as a decision tree for waterway debris response with color-coded endpoints. Yellow endpoints represent response to waterway debris that is exposed to or has the potential to release oil, hazardous substances, pollutants, or contaminants. Blue endpoints represent response to waterway debris that is not exposed to and does not have the potential to release oil, hazardous substances, pollutants, or contaminants. Endpoints within the green shaded area indicate that response may occur under Robert T. Stafford Disaster Relief and Emergency Assistance Act (Stafford Act) authorities and/or funding.

The intent of the flowchart is to outline the most likely response structure with the understanding that flexibility is an inherent component of an effective response.

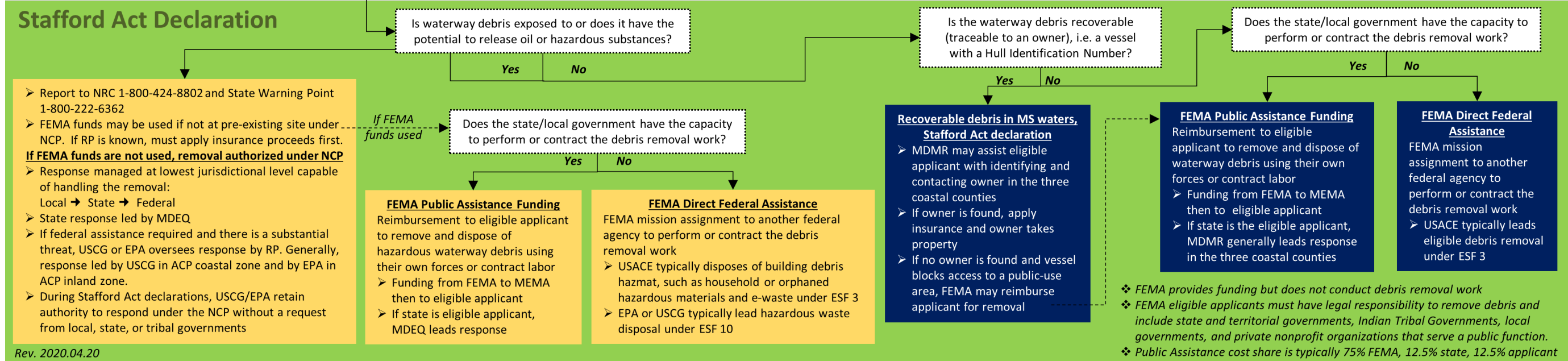
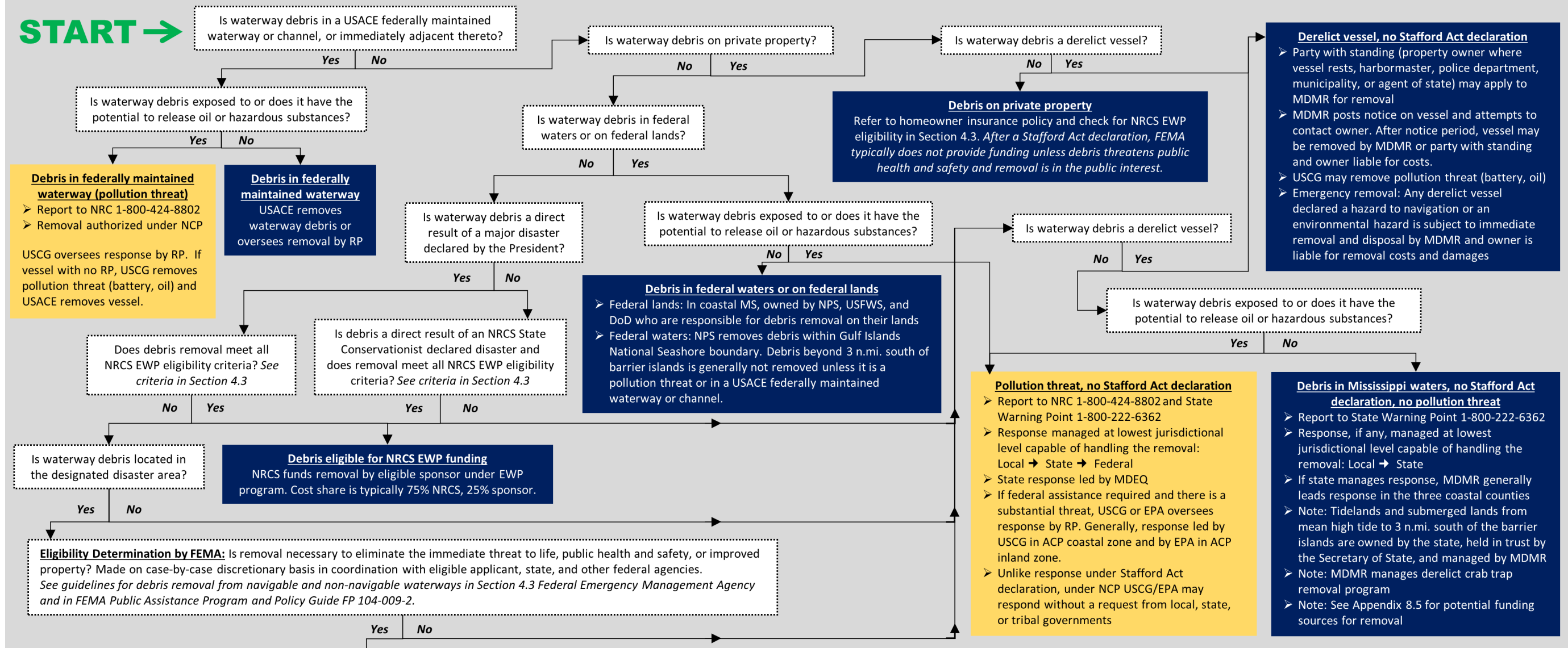


# Mississippi Waterway Debris Response Flowchart

<b>Flowchart Key</b>	Response to waterway debris that is exposed to or has the potential to release oil, hazardous substances, pollutants, or contaminants
	Response to waterway debris that is not exposed to and does not have the potential to release oil, hazardous substances, pollutants, or contaminants
	Indicates response may occur under Stafford Act authorities and/or funds

**Waterway Debris**  
Any solid material, including but not limited to vegetative debris and debris exposed to or that has the potential to release oil, hazardous substances, pollutants, or contaminants, that enters a waterway following an acute incident and poses a threat to the natural or man-made environment. This may include shoreline and wetland debris and debris in some inland, non-tidal waterways.

- Acronyms**
- ACP – Area Contingency Plan
  - DoD – Department of Defense
  - EPA – U.S. Environmental Protection Agency
  - ESF – Emergency Support Function
  - EWP – Emergency Watershed Protection
  - FEMA – Federal Emergency Management Agency
  - MDEQ – MS Department of Environmental Quality
  - MDMR – MS Department of Marine Resources
  - MEMA – MS Emergency Management Agency
  - NCP – National Oil & Hazardous Substances Contingency Plan
  - NPS – National Park Service
  - NRC – National Response Center
  - NRCS – Natural Resources Conservation Service
  - RP – Responsible Party (Owner, Operator, Lessee)
  - USACE – U.S. Army Corps of Engineers
  - USCG – U.S. Coast Guard
  - USFWS – U.S. Fish and Wildlife Service



- ❖ FEMA provides funding but does not conduct debris removal work
- ❖ FEMA eligible applicants must have legal responsibility to remove debris and include state and territorial governments, Indian Tribal Governments, local governments, and private nonprofit organizations that serve a public function.
- ❖ Public Assistance cost share is typically 75% FEMA, 12.5% state, 12.5% applicant

## 3 Organization Jurisdictions and Capabilities

### 3.1 Mississippi Waterway Debris Response Map

The “Mississippi Waterway Debris Response Map” on the following page displays relevant agency jurisdiction boundaries in Mississippi’s three coastal counties. After an acute waterway debris incident, the agency (or agencies) with jurisdiction and authority for removing debris will vary depending on where the debris is located. This map includes information that stakeholders identified as important in determining jurisdiction within the state. A dynamic version of the response map is also available [online](#) in NOAA’s Environmental Response Management Application (ERMA).



# Mississippi Waterway Debris Response Map

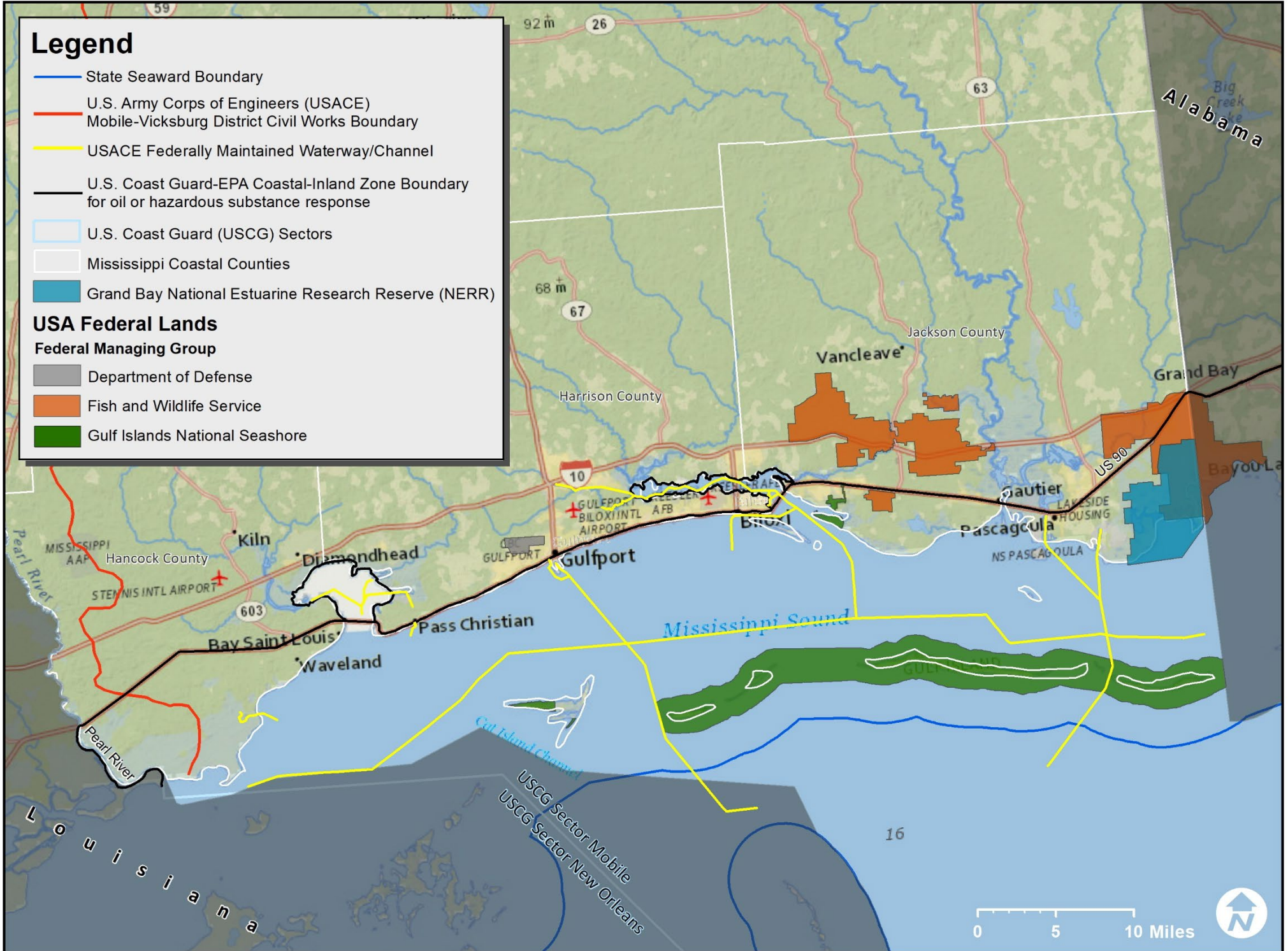
## Legend

- State Seaward Boundary
- U.S. Army Corps of Engineers (USACE) Mobile-Vicksburg District Civil Works Boundary
- USACE Federally Maintained Waterway/Channel
- U.S. Coast Guard-EPA Coastal-Inland Zone Boundary for oil or hazardous substance response
- U.S. Coast Guard (USCG) Sectors
- Mississippi Coastal Counties
- Grand Bay National Estuarine Research Reserve (NERR)

## USA Federal Lands

### Federal Managing Group

- Department of Defense
- Fish and Wildlife Service
- Gulf Islands National Seashore



### 3.2 Response Capabilities

	Yes - Verified In-house Capability	MDEQ	MDMR	MSU-ES /MS-AL Sea Grant Consortium	BSEE <sup>1</sup>	FEMA Region IV <sup>2</sup>	NOAA	NRCS	USACE	USCG Sector Mobile	U.S. EPA Region IV <sup>11</sup>	USFWS
	Contract - Contracted capability											
Technology	Aerial photography and video	-	-	-	-	-	Yes	-	-	Yes	Contract	-
	IT support during response (server/storage space for data and information sharing)	-	-	-	-	-	Yes	-	Yes	-	Yes	-
	Remote sensing (LIDAR)	-	-	-	-	-	Yes	-	Contract	-	Contract	-
	Sub-Surface Detection: Multi-beam, side scan, and side scan sonar	-	Yes	-	-	-	Yes	-	Contract	-	Contract	-
Equipment	Aircraft	-	-	-	-	-	Yes	-	-	Yes	Contract	-
	Boom	-	-	-	-	-	-	-	Contract	Contract	Contract	-
	Heavy equipment: Barge, Self-loading barge, Crane, Knuckleboom Crane, Environmental clamshell dredge, Excavator	-	-	-	-	-	-	-	Contract	Contract	Contract	-
	Remotely Operated Vehicle (ROV)	-	-	-	-	-	-	-	Yes	-	Contract	-
	Unmanned Aerial Vehicle (UAV)/Surveillance drones with FAA trained operator	-	-	-	-	-	Yes	-	Yes <sup>5</sup>	-	Contract	-
	Vessels	-	Yes	-	-	-	Yes	-	Contract	Yes	Contract	Yes
	Other specialized equipment that cannot be readily procured immediately following a debris incident (from heavy equipment to electronics)	-	-	-	-	-	-	-	Contract	Yes	Contract	Yes
Workforce/Expertise	Communication/public information expertise (dedicated spokesperson/Public Information Officer)	-	-	-	-	-	-	-	Yes	Yes	Yes	-
	Compliance and permitting expertise	Yes	Yes	-	-	Yes	Yes	Yes	Yes	-	Yes	Yes
	Data/information management capabilities	-	-	Yes	-	-	-	-	Yes	-	Yes	-
	Debris modeling expertise (volume, transport, hindcasting, etc.)	-	-	-	-	-	Yes	-	Yes	-	Contract	-
	Dedicated waterway/marine debris staff (responders, response team, regional coordination, etc.)	-	-	-	-	-	Yes	-	Yes	Yes	-	-
	Dive support (scientific, technical, commercial, etc.)	-	Yes	-	-	-	Yes	-	-	Contract	Contract	-
Environmental or cultural resource expertise (location of sensitive areas, endangered species present, etc.)	Yes	Yes	Yes	Yes	Yes	Yes	Yes <sup>3</sup>	Yes	Yes	Yes	Yes	

Yes - In-house Capability		MDEQ	MDMR	MSU-ES/MS-AL Sea Grant Consortium	BSEE <sup>1</sup>	FEMA Region IV <sup>2</sup>	NOAA	NRCS	USACE	USCG Sector Mobile	U.S. EPA Region IV <sup>11</sup>	USFWS
Contract - Contracted capability												
Workforce/Expertise continued	Geographic Information System (GIS) mapping and plotting of imagery	-	Yes	Yes	-	Yes	Yes	-	Yes <sup>6</sup>	-	Yes	-
	Hazardous substance and/or oiled debris expertise	Yes	-	-	-	-	Yes	-	Yes	Yes	Yes	-
	Incident Command System (ICS) trained staff	Yes	-	-	-	Yes	Yes	-	Yes	Yes	Yes	-
	Local expertise	Yes	Yes	Yes	-	-	Yes	Yes	Yes	Yes	Yes	Yes
	Post-storm damage assessment teams	-	-	Yes	-	Yes	-	-	-	Yes	Yes	-
	Technical expertise for removal operations (techniques, best management practices, etc.)	-	-	Yes	-	Yes	Yes	Yes	Yes <sup>7</sup>	Yes	Yes	-
	Volunteer manpower/Volunteer coordination	-	-	Yes	-	-	-	-	-	Yes	-	Yes
	Waterway management authority (law enforcement officers)	-	Yes	-	-	-	-	-	-	Yes	-	-
Logistics	Contracting: Contract authority and oversight capabilities	Yes	Yes	-	-	-	Yes	-	Yes	Yes <sup>9</sup>	Yes	-
	Contracting: Pre-approved removal contractors	Yes	-	-	-	-	-	-	Yes	Yes <sup>9</sup>	-	-
	Contracting: Pre-event contracts and staged agreements in place	-	-	-	-	-	-	-	Yes	Yes <sup>9</sup>	Yes	-
	Docks for wet storage of vessels	-	Yes	-	-	-	-	-	-	Yes <sup>10</sup>	-	-
	Facility suitable for establishing an emergency operations center	-	-	-	-	-	Yes	-	Yes	Yes	-	-
	Funding for waterway debris removal	-	Yes	-	-	-	Yes <sup>4</sup>	Yes	Yes <sup>3</sup>	Yes	Yes	-
	Pre-designated landfill/disposal sites	Yes	-	-	-	-	-	-	-	-	-	-
	Research program established to analyze long-term trends, impacts, etc.	-	-	Yes	-	-	Yes	-	Yes	-	-	-
	Staging/Off-Loading: Land with water access to stage, offload debris (has not been evaluated for suitability or officially pre-designated)	-	Yes	-	-	-	-	-	-	-	-	-
	Staging/Off-Loading: Pre-designated staging, off-loading and special handling areas (already evaluated for suitability)	-	-	-	-	-	-	-	-	Yes	-	-
Staging area for dry storage of vessels	-	Yes	-	-	-	Yes	-	Yes	Yes <sup>10</sup>	-	Yes	
Other logistical support, including fuel, housing, food, dumpsters, roll-off containers, trucks to haul debris, etc.	-	Yes	-	-	-	-	-	-	-	Contract	-	

Note: Capabilities which could be used during waterway debris response in Mississippi were either identified through research or were self-reported by an organization. Organizations were asked to indicate whether capabilities were in-house or were contracted through a third party. Footnotes refer to additional information provided for a particular capability. While not included in this table, local jurisdictions may also possess capabilities listed above and should be included in all phases of response to maximize utilization of local expertise and resources.



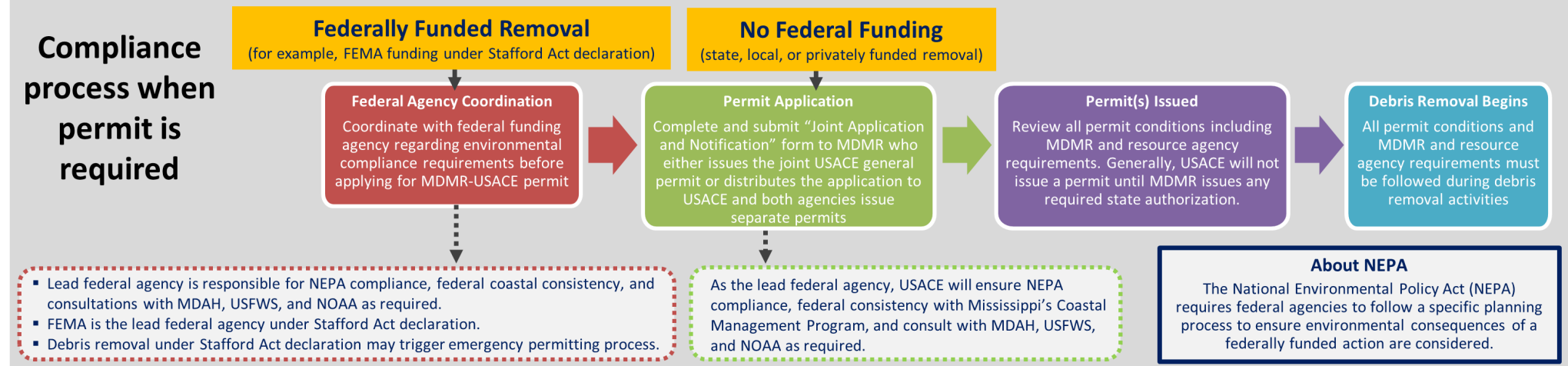
- <sup>1</sup>BSEE BSEE may have other capabilities, but agency mission does not directly support debris response.
- <sup>2</sup>FEMA Capabilities contingent upon a Presidential major disaster declaration. FEMA capable of mission-assigning other federal support to increase capabilities. FEMA has interactive live collection and mapping capabilities and a template wet debris collector map for Region IV.
- <sup>3</sup>NOAA Coordinates marine mammal and sea turtle stranding response and reviews proposed debris removal activities for compliance with ESA and Magnuson-Stevens Fisheries Conservation and Management Act
- <sup>4</sup>NOAA Funding through grant program and possible Congressional supplemental funding
- <sup>5</sup>USACE Surveillance drone housed at USACE District, Jacksonville
- <sup>6</sup>USACE Have GIS cadre for response
- <sup>7</sup>USACE Have planning response teams
- <sup>8</sup>USACE Funding in place for federal projects only
- <sup>9</sup>USCG USCG contracts only
- <sup>10</sup>USCG Limited space
- <sup>11</sup>EPA EPA routinely conducts removal operations of hazardous substances and oil, including debris. EPA resources would be tasked by the EPA personnel operating in the Unified Command or by EPA's FOOSC/Duty Officer in Region IV.

## **4 Permitting and Compliance Requirements in Mississippi**

The “Permitting and Compliance for Waterway Debris Removal in Mississippi” handout on the following page synthesizes permitting and compliance requirements that must be met before waterway debris removal operations begin. The top portion of the handout outlines the process to follow to stay in compliance, while the bottom portion highlights specific state and federal agency requirements with general contact information.

# Permitting and Compliance for Waterway Debris Removal in Mississippi

- In Mississippi’s coastal zone (Hancock, Harrison, and Jackson Counties), a MS Department of Marine Resources (MDMR) coastal wetland permit and/or U.S. Army Corps of Engineers (USACE) permit may be required if debris removal involves dredging, the discharge of dredge or fill material, or involves structures or work impacting the navigability of a waterway.
- MDMR and USACE have a joint permit application process.
- The **lead federal agency** is responsible for compliance with National Environmental Policy Act (NEPA), federal coastal consistency, and consulting with tribal and resource agencies including Mississippi Department of Archives and History (MDAH), U.S. Fish and Wildlife Service (USFWS), and the National Oceanic and Atmospheric Administration (NOAA) as required.



## Agency Requirements and Contact Numbers

<p><b>MS Department of Marine Resources (MDMR)</b></p> <p><b>Wetlands Permitting Program</b> 228-523-4106</p>	<ul style="list-style-type: none"> <li>▪ Serves as the initial agency to submit a permit application in Hancock, Harrison, and Jackson Counties</li> <li>▪ Coastal wetland permit may be required if the activity involves dredging, the discharge of dredge or fill material, or involves structures or work impacting the navigability of a waterway</li> <li>▪ MDMR forwards permit application to appropriate agencies including USACE if required</li> <li>▪ For minor activities at or below the watermark of ordinary high tide, MDMR may issue the joint USACE Mobile District general permit. MDMR does not currently issue permits on behalf of USACE Vicksburg District.</li> <li>▪ For major activities not covered by general permit guidelines, a separate permit is issued by MDMR and by USACE</li> </ul>	<p><b>U.S. Army Corps of Engineers (USACE)</b></p> <p><b>Mobile District Regulatory Division</b> 251-690-2658</p> <p><b>Vicksburg District Regulatory Division</b> 601-631-7071</p>	<ul style="list-style-type: none"> <li>▪ Permit(s) that may be required for response work in waterways and wetlands                             <ul style="list-style-type: none"> <li>▪ <b>MSGP-10 Debris Removal (Mobile District)</b> for debris removal from any waterway for navigation, drainage, and/or pollution control</li> <li>▪ <b>NWP-3 Maintenance</b> for removal/maintenance of culverts, sediments or debris accumulated around outfalls, bridges, etc.</li> <li>▪ <b>NWP-22 Removal of Vessels</b> for removal of wrecked, abandoned, or disabled vessels or other man-made obstructions to navigation</li> <li>▪ <b>NWP-37 Emergency Watershed Protection &amp; Rehabilitation</b> for work done under NRCS’s Emergency Watershed Protection program</li> <li>▪ <b>NWP-38 Cleanup Hazardous/Toxic Waste</b> for containment, stabilization, or removal of hazardous or toxic waste not under Superfund</li> </ul> </li> </ul>
<p><b>MS Department of Archives and History (MDAH)</b></p> <p><b>Historic Preservation Division</b> 601-576-6940</p>	<ul style="list-style-type: none"> <li>▪ Serves as the State Historic Preservation Office and ensures compliance with National Historic Preservation Act and Antiquities Law of Mississippi</li> <li>▪ Consultation with MDAH required if waterway debris response involves federal permits and/or funding (USACE permit, FEMA funding, etc.) to evaluate whether activities affect historic or cultural sites included in or eligible for the National Register of Historic Places</li> <li>▪ State agencies, local governments, and political subdivisions must notify MDAH prior to public construction or improvement projects and a permit may be required</li> </ul>	<p><b>National Oceanic and Atmospheric Administration (NOAA)</b></p> <p><b>National Marine Fisheries Service (NMFS)</b> ESA: 727-824-5312 EFH: 409-766-3699</p>	<ul style="list-style-type: none"> <li>▪ Consultation required if waterway debris response involves federal permits and/or funding (USACE permit, FEMA funding, etc.) to comply with:                             <ul style="list-style-type: none"> <li>▪ Endangered Species Act (ESA) to ensure actions do not jeopardize the continued existence of any listed endangered or threatened marine species or adversely modify designated critical habitat</li> <li>▪ Magnuson-Stevens Fisheries Conservation and Management Act to ensure actions do not adversely affect Essential Fish Habitat (EFH)</li> </ul> </li> </ul>
<p><b>MS Department of Environmental Quality (MDEQ)</b></p> <p>601-961-5171</p>	<ul style="list-style-type: none"> <li>▪ Develops and issues emergency debris removal, management, and disposal guidance</li> <li>▪ Authorizes the siting and operation of temporary emergency debris management sites by agencies and organizations that manage disaster debris</li> <li>▪ Reviews and evaluates debris removal permit applications for impacts to wetlands, streams, and open waters</li> </ul>	<p><b>U.S. Fish and Wildlife Service (USFWS)</b></p> <p><b>Mississippi Ecological Services Field Office (MSFO)</b> 601-965-4900</p>	<ul style="list-style-type: none"> <li>▪ Consultation with MSFO required if waterway debris response involves federal permits and/or funding (USACE permit, FEMA funding, etc.) to comply with:                             <ul style="list-style-type: none"> <li>▪ Endangered Species Act (ESA) to ensure actions do not adversely modify designated critical habitat or jeopardize the continued existence of any listed endangered or threatened land or freshwater species and certain marine species such as manatee</li> <li>▪ Coastal Barrier Resources Act to ensure actions do not encourage development on coastal barriers along Mississippi’s coast</li> </ul> </li> </ul>



## 5 Contact Information

Note: Contact information is only included for organizations who have provided and/or approved information in the following tables.

### Local/State Agencies

Agency	Division	Topic	Point of Contact	Phone	Email	
County Emergency Management Agencies	-	-	See <a href="https://www.msema.org/county-ema/">https://www.msema.org/county-ema/</a> for a complete list of county emergency management contacts	-	-	
MS Department of Archives and History (MDAH)	Historic Preservation Division	National Historic Preservation Act and Antiquities Law of Mississippi compliance	Main Number	601-576-6940	-	
			Barry White, Deputy State Historic Preservation Officer	601-576-6953	bwhite@mdah.ms.gov	
			Cindy Carter-Davis, Chief Archaeologist	601-576-6945	ccarterdavis@mdah.ms.gov	
MS Department of Environmental Quality (MDEQ)	-	-	Main Number	601-961-5171	-	
	Office of Pollution Control, Emergency Services Division	ESF 10 Oil and Hazardous Material Response lead	Nick Hatten	601-961-5171	nhatten@mdeq.ms.gov	
			Cody Fisher, Chief, Emergency Services Division	601-961-5065	cfisher@mdeq.ms.gov	
	Office of Pollution Control, Field Services Division, South Regional Office	Planning and coordination	Barbara Viskup, Supervisor	228-432-3452	bviskup@mdeq.ms.gov	
	Office of Pollution Control, Waste Division	Debris management and disposal	Ethan Mayeu, Solid Waste Compliance Branch Chief	601-961-5726	emayeu@mdeq.ms.gov	
Trent Jones, Chief, Waste Division			601-961-5726	tjones@mdeq.ms.gov		
MS Department of Marine Resources (MDMR)	Office of Coastal Resources Management	Coastal Preserves Bureau – response in MS Coastal Preserves	James Davis, Coastal Preserves Bureau Director	228-523-4115	james.davis@dmr.ms.gov	
			Front Desk	228-523-4106	jennifer.stout@dmr.ms.gov	
		Wetlands and Permitting Bureau – permitting and compliance	Willa Brantley, Director Bureau of Wetlands Permitting	228-523-4108	willa.brantley@dmr.ms.gov	
	Office of Finance and Administration	Derelict Vessel Program	Russell Weatherly, Derelict Vessel Removal Coordinator	228-374-5000	russell.weatherly@dmr.ms.gov	
			Grand Bay NERR – response in Grand Bay NERR	Dr. Ayesha Gray, Manager	228-475-7047	ayesha.gray@dmr.ms.gov
			Tidelands Program	Sonja Slater, Tidelands Coordinator	228-523-4138	sonja.slater@dmr.ms.gov
	Office of Marine Fisheries	Mississippi Derelict Crab Trap Removal Program	Jason Saucier, Director Shrimp and Crab Bureau	228-523-4038	jason.saucier@dmr.ms.gov	
			Traci Floyd, Director Marine Fisheries	228-523-4068	traci.floyd@dmr.ms.gov	
Office of Marine Patrol	Report boating emergencies	Marine Patrol Dispatch	1-844-WE-R-DMR (1-844-937-6367) or 228-523-4134	-		

## State Agencies Continued

Agency	Division	Topic	Point of Contact	Phone	Email
MS Emergency Management Agency (MEMA)	-	Report emergencies including hazardous material, marine, petroleum or weather incidents	State Warning Point	1-800-222-6362	-
			MEMA Watch Desk	601-933-6671	watchdesk@mema.ms.gov
	Office of Preparedness	Planning and coordination	Loretta Thorpe, Preparedness Office Director	601-933-6601	lthorpe@mema.ms.gov
			Thomas Harris, Southern District Bureau Director	601-933-6370	tharris@mema.ms.gov
			Mike Siler, Public Assistance Office Director	601-933-6886	msiler@mema.ms.gov
			Diane Sager, Public Assistance Bureau Director	228-594-3343	dsager@mema.ms.gov
Office of Response and Radiological Emergency Preparedness	Andrew McMillin, Operations Section Chief	601-933-6716	amcmillin@mema.ms.gov		
MS Secretary of State's Office	-	Trustee of tidelands and submerged lands	Raymond Carter, Assistant Secretary of State - Gulf Coast	228-432-0541	raymond.carter@sos.ms.gov
MS State University Extension Service (MSU-ES)	Coastal Research and Extension Center	Mississippi Coastal Cleanup Program	Eric Sparks	228-388-4710	eric.sparks@msstate.edu

## Federal Agencies

Agency	Division	Topic	Point of Contact	Phone	Email
Bureau of Safety and Environmental Enforcement (BSEE)	Marine Trash and Debris Program	Planning and coordination	James Sinclair, Marine Ecologist	504-736-2789	james.sinclair@bsee.gov
Federal Emergency Management Agency (FEMA)	Region IV	Funding following presidential disaster declaration	Contact local emergency management agency. See <a href="https://www.msema.org/county-ema/">https://www.msema.org/county-ema/</a> for a complete list of contacts.	-	-
		Technical expertise for removal operations and environmental, compliance, and permitting expertise	Scott Fletcher, Sr. Environmental Protection Specialist	202-322-3924 (C)	scott.fletcher@fema.dhs.gov
		Environmental and historic preservation	Rose Gutowski, Regional Unified Federal Review (UFR) Coordinator	202-655-8714 (C)	rose.gutowski@fema.dhs.gov
National Oceanic and Atmospheric Administration (NOAA)	National Marine Fisheries Service (NMFS) or NOAA Fisheries)	Emergency ESA/EFH consultation	-	-	nmfs.ser.emergency.consult@noaa.gov
		EFH information	David Dale	727-551-5736	david.dale@noaa.gov
			January Murray	225-380-0091	january.murray@noaa.gov
			Rusty Swafford	409-766-3699	rusty.swafford@noaa.gov
		ESA information	General Contact, Routine ESA Consultation	727-824-5312	-
Joe Cavanaugh, Consultation Biologist	-	joseph.cavanaugh@noaa.gov			

*continued on next page*

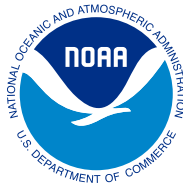
## Federal Agencies Continued

Agency	Division	Topic	Point of Contact	Phone	Email
<i>continued from previous page</i>	NOS, Office of Coast Survey	Navigation preparation and response	Tim Osborn, Regional Navigation Manager – Central Gulf Coast	337-291-2111	tim.osborn@noaa.gov
National Oceanic and Atmospheric Administration (NOAA)	NOS, Office of Response and Restoration, Emergency Response Division	Potential to release oil or hazardous substance	Adam Davis, Scientific Support Coordinator for USCG District 8 and backup for RRT IV	206-549-7759 (C) 206-526-4911 (24hr)	adam.davis@noaa.gov
	NOS, Office of Response and Restoration, Marine Debris Program	Planning and coordination for marine debris issues	Caitlin Wessel, Gulf of Mexico Regional Coordinator	251-544-5013 (O) 251-222-0276 (C)	caitlin.wessel@noaa.gov
National Park Service (NPS)	Gulf Islands National Seashore	Response in Gulf Islands National Seashore	Darrell Echols, Superintendent	850-934-2600	darrell_echols@nps.gov
			James Haynes, Biologist	228-230-4105	james_haynes@nps.gov
			Amber Rhodes, Environmental Protection Specialist	-	amber_rhodes@nps.gov
-	-	Response on NPS-owned lands	C. Anna Toline, Marine Scientist, Oceans Program Coordinator	843-518-1939	catherine_toline@nps.gov
Natural Resource Conservation Service (NRCS)	Hancock County Soil and Water Conservation District	EWP information – Hancock County	-	601-255-3225 ext. 3	-
	Harrison County Field Office	EWP information – Harrison County	-	228-831-0881 ext. 3	-
	Jackson County Soil and Water Conservation District	EWP information – Jackson County	-	228-826-2482 ext. 3	-
U.S. Army Corps of Engineers (USACE)	Emergency Operations	Mississippi Valley Division	Matt Tate, Debris Program Manager	251-802-2011	jacob.m.tate@usace.army.mil
		Vicksburg District – Primary District following Stafford Act Declaration	Robert Hess, Chief Emergency Management	601-631-5759	robert.p.hess@usace.army.mil
		Mobile District – Support	Ashley Leflore, Chief Emergency Management	251-694-3760	ashley.leflore@usace.army.mil
	Navigation	Mobile District – Federally maintained waterway or channel	Nate Lovelace, Operations Division	251-694-3713	nathan.d.lovelace@usace.army.mil
		Vicksburg District – Federally maintained waterway or channel	Chad Bounds, Chief of Navigation Section	601-631-5267	chad.r.bounds2@usace.army.mil
			Joel Brown, Chief of River Operations	601-631-5600	joel.t.brown@usace.army.mil
	Regulatory Program	Mobile District – Compliance and permitting	-	251-690-2658	cesam-rd@sam.usace.army.mil
		Vicksburg District – Compliance and permitting	-	601-631-7071	regulatory@usace.army.mil
U.S. Coast Guard (USCG)	-	Report potential to release oil or hazardous substance	National Response Center (NRC)	800-424-8802	-
	<i>continued on next page</i>	District 8	Planning and coordination	Dee Oos, Area Contingency Plan Program Manager	504-671-2233
Mike Sams, Incident Management Preparedness Advisor			504-671-2234	michael.k.sams@uscg.mil	
Adam Tyndale, Response Equipment Coordinator			504-671-2063	adam.j.tyndale@uscg.mil	



## Federal Agencies Continued

Agency	Division	Topic	Point of Contact	Phone	Email
U.S. Coast Guard (USCG)	District 8	Planning and coordination	District Response Advisory Team (DRAT) Supervisor	504-589-6225	-
			CWO Brandon Todd, DRAT	504-460-5002	brandon.l.todd@uscg.mil
	District 8, Sector Mobile	Capability contact	USCG Sector Mobile Command Center	251-441-5976	-
			Station Gulfport	228-868-3743	-
			Station Pascagoula	228-769-5601	-
		Planning and coordination	LCDR Erica Brewton, Emergency Management Force Readiness Chief	251-441-5694	erica.m.brewton@uscg.mil
			LT Victoria Lacefield-Rodriguez, Incident Management Division Chief	251-441-6231 (O) 251-447-7131 (C)	victoria.e.lacefield-rodriguez@uscg.mil
			LT Andrew Anderson, Waterways Management	251-382-8653	andrew.s.anderson@uscg.mil
			LTJG Nina Lennon, Emergency Management Specialist	251-441-6698	nina.j.lennon@uscg.mil
	U.S. Environmental Protection Agency (EPA)	Region IV	Report potential to release oil or hazardous substance	National Response Center (NRC)	800-424-8802
Planning and coordination			Gary Andrew, RRT IV and ESF 10 Coordinator	678-733-1621	andrew.gary@epa.gov
			Jordan Garrard	404-562-8642	-
Capability contact			EPA Region IV Duty Officer	404-562-8700	-
U.S. Fish and Wildlife Service (USFWS)	Coastal Program	Northern Gulf Coastal Program	Patric Harper, Coastal Program Coordinator	251-802-3154	patric_harper@fws.gov
	Gulf Coast National Wildlife Refuge (NWR) Complex	Response in Mississippi Sandhill Crane and Grand Bay NWRs	Jeremy Edwardson, Project Leader	228-933-2585	jeremy_edwardson@fws.gov
	Mississippi Ecological Services Field Office	Compliance and permitting	Main Number	601-965-4900	-
			Paul Necaize	228-493-6631	paul_necaize@fws.gov



Gina M. Raimondo  
United States Secretary of Commerce

Dr. Richard W. Spinrad  
Under Secretary of Commerce for Oceans and Atmosphere  
and NOAA Administrator

Nicole R. LeBoeuf  
Assistant Administrator for Ocean Services  
and Coastal Zone Management