



# New Jersey Marine Debris Emergency Response Guide: Field Reference Guide

NOAA Marine Debris Program  
National Oceanic and Atmospheric Administration  
U.S. Department of Commerce  
December 2022

# Table of Contents

<b>1 Introduction</b> .....	<b>2</b>
1.1 Purpose.....	2
1.2 Scope of <i>Guide</i> .....	2
<b>2 New Jersey Marine Debris Response Flowchart</b> .....	<b>3</b>
<b>3 New Jersey Marine Debris Response Map</b> .....	<b>5</b>
<b>4 Permitting and Compliance Requirements in New Jersey</b> .....	<b>7</b>
<b>5 Organization Contact Information</b> .....	<b>9</b>

## 1 Introduction

### 1.1 Purpose

This *Field Reference Guide* condenses information contained in the *New Jersey Marine Debris Emergency Response Guide: Comprehensive Guidance Document (Guide)* to facilitate use during emergency response operations. While the *Comprehensive Guidance Document* serves as a complete reference for marine debris response in New Jersey, the *Field Reference Guide* includes the most pertinent information for quick reference in the field and during times of crisis. Both documents and subsequent versions will be posted on the National Oceanic and Atmospheric Administration’s (NOAA) Marine Debris Program website at <https://marinedebris.noaa.gov/>.

The purpose of this document is to improve preparedness for response and recovery operations following a disaster that generates marine debris in coastal New Jersey. The *Comprehensive Guidance Document* and complementary *Field Reference Guide* outline existing response structures at the local, state, and federal levels to facilitate a coordinated, well-managed, and immediate response to marine debris incidents impacting the state of New Jersey. Individual organization roles and responsibilities are presented in a consolidated one-page [flowchart](#), which functions as a decision tree for waterway debris response. Organization jurisdictions are presented in a [map](#) in this document. A dynamic version of the jurisdiction map is also available [online](#). Additionally, permitting and compliance requirements for waterway debris removal have been synthesized in a one-page reference [handout](#).

### 1.2 Scope of *Guide*

The *Comprehensive Guidance Document* and *Field Reference Guide* address both natural and anthropogenic marine debris incidents affecting New Jersey’s coastal area, as defined by the NJ Coastal Area Facility Review Act (N.J.S.A. 13:19-1 et seq.). In 33 U.S.C. § 1956(3), marine debris is defined as any persistent solid material that is manufactured or processed and directly or indirectly, intentionally or unintentionally, disposed of or abandoned into the marine environment or Great Lakes. Although vegetative debris is not included in the legal definition for marine debris, stakeholders have identified it as a common debris stream of concern following natural disasters. Therefore, in this document, the term marine debris is used more generally and includes vegetative

material and debris that could be exposed to or release oil, hazardous substances, pollutants, or contaminants that enters a waterway following an acute incident and poses a threat to the natural or built environment. This also includes shoreline and wetland debris and debris in some inland, non-tidal waterways. This Guide specifically addresses marine debris resulting from episodic incidents, such as disaster debris, and may not apply to chronic marine debris issues.

## **2 New Jersey Marine Debris Response Flowchart**

The “New Jersey Marine Debris Response Flowchart” included in this section provides a visual one-page representation of organization roles and responsibilities. The flowchart functions as a decision tree for marine debris response with color-coded endpoints. Yellow endpoints represent response to marine debris that is exposed to or has the potential to release oil, hazardous substances, pollutants, or contaminants. Blue endpoints represent response to debris that is not exposed to and does not have the potential to release oil, hazardous substances, pollutants, or contaminants. Endpoints within the green shaded area indicate that response may occur under Stafford Act authorities and/or funding.

# New Jersey Marine Debris Response Flowchart

## Purpose

The flowchart functions as a decision tree for marine debris response with color-coded endpoints. It is designed to inform response to debris that enters a waterway following a natural or anthropogenic incident and poses a threat to the natural or built environment. This may include shoreline and wetland debris and debris in some inland, non-tidal waterways.

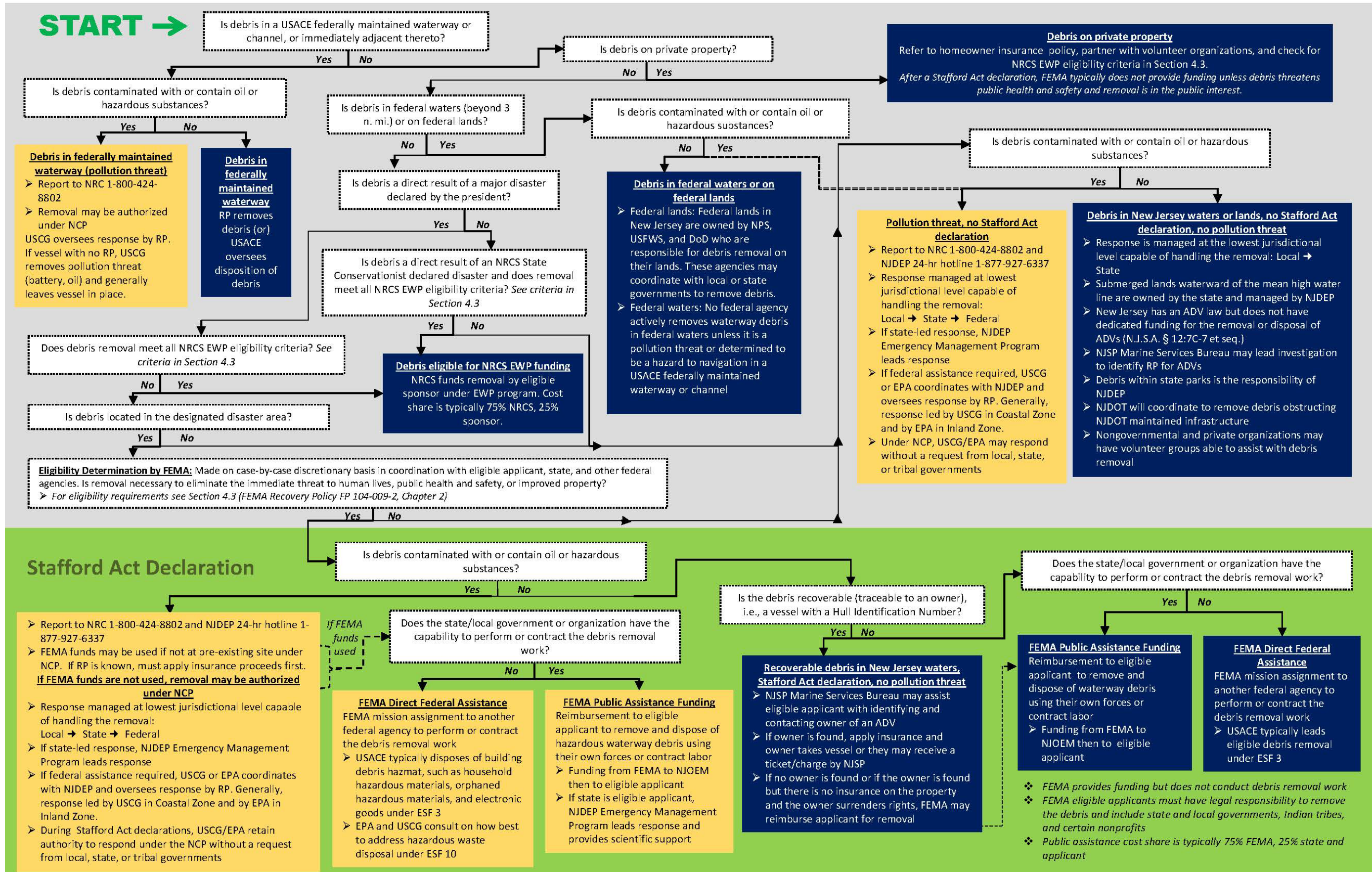
## Acronyms

ADV – Abandoned and derelict vessel  
DoD – U.S. Department of Defense  
EPA – U.S. Environmental Protection Agency  
ESF – Emergency support function  
EWP – Emergency Watershed Protection Program  
FEMA – Federal Emergency Management Agency

NCP – National Oil & Hazardous Substance Contingency Plan  
NJDEP – New Jersey Department of Environmental Protection  
NJDOT – New Jersey Department of Transportation  
NJOEM – New Jersey Office of Emergency Management  
NJSP – New Jersey State Police

NPS – National Park Service  
NRC – National Response Center  
NRCS – Natural Resources Conservation Service  
RP – Responsible party (Owner, Operator, Lessee)  
USACE – U.S. Army Corps of Engineers  
USCG – U.S. Coast Guard  
USFWS – U.S. Fish and Wildlife Service

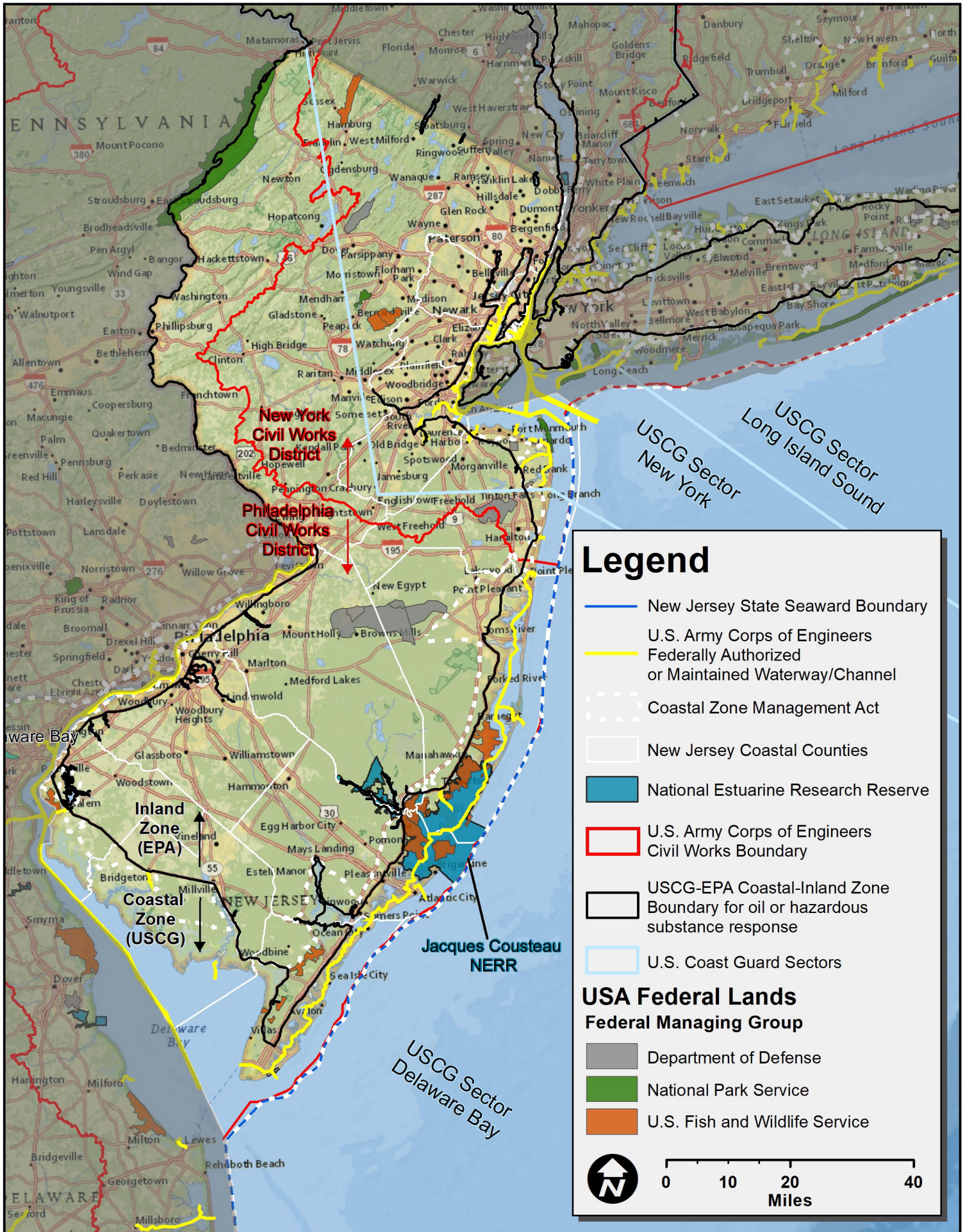
Flowchart Key	Response to debris that is exposed to or has the potential to release oil, hazardous substances, pollutants, or contaminants
	Response to debris that is not exposed to and does not have the potential to release oil, hazardous substances, pollutants, or contaminants
	Response occurring under Stafford Act authorities and/or funds



### 3 New Jersey Marine Debris Response Map

The “New Jersey Marine Debris Response Map” on the following page displays relevant agency jurisdiction boundaries. After a marine debris incident, the agency (or agencies) responsible for removing debris will vary depending on where the debris is located. This map includes information that stakeholders identified as important in determining jurisdiction within the state. A dynamic version of this map is also available [online](#) in the Environmental Response Management Application (ERMA).

# New Jersey Marine Debris Response Map

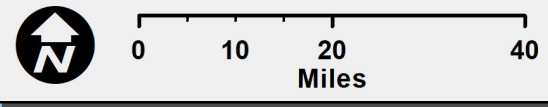


## Legend

- New Jersey State Seaward Boundary
- U.S. Army Corps of Engineers Federally Authorized or Maintained Waterway/Channel
- Coastal Zone Management Act
- New Jersey Coastal Counties
- National Estuarine Research Reserve
- U.S. Army Corps of Engineers Civil Works Boundary
- USCG-EPA Coastal-Inland Zone Boundary for oil or hazardous substance response
- U.S. Coast Guard Sectors

## USA Federal Lands Federal Managing Group

- Department of Defense
- National Park Service
- U.S. Fish and Wildlife Service

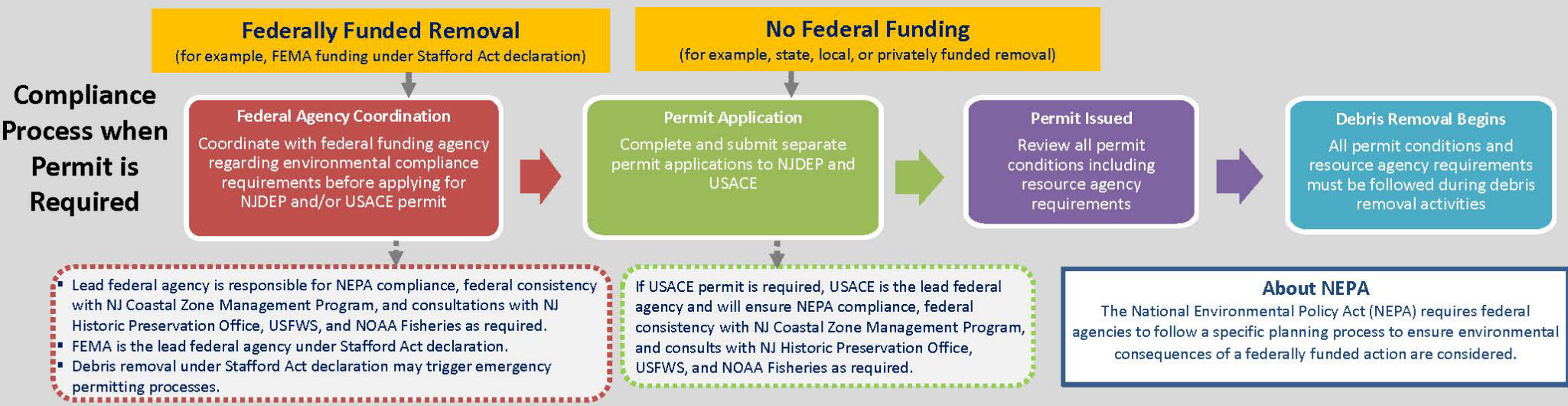


## **4. Permitting and Compliance Requirements in New Jersey**

The “Permitting and Compliance for Waterway Debris Removal in New Jersey” handout on the following page synthesizes permitting and compliance requirements that must be met before waterway debris removal operations begin. The top portion of the one-pager outlines the process to follow to stay in compliance, while the bottom portion highlights specific state and federal agency requirements with general contact information.

# Permitting and Compliance for Marine Debris Removal in New Jersey

- In New Jersey, a New Jersey Department Environmental Protection (NJDEP) permit and/or a U.S. Army Corps of Engineers (USACE) permit may be required if debris removal involves excavating, dredging, the discharge of fill or dredge material, or involves structures or work impacting navigable waterways or wetlands.
- NJDEP and USACE do not have a joint permit application process. Applicants must apply through both NJDEP and USACE separately.
- The **lead federal agency** is responsible for compliance with National Environmental Policy Act (NEPA), federal coastal consistency, and consulting with resource agencies including New Jersey Historic Preservation Office, U.S. Fish and Wildlife Service (USFWS), and National Oceanic and Atmospheric Administration (NOAA) Fisheries as required.



## Agency Requirements and Legislation Details

<p><b>U.S. Army Corps of Engineers (USACE)</b> Philadelphia District Regulatory Program 215-656-6728</p> <p><b>New York District Regulatory Program</b> 917-790-8511</p>	<ul style="list-style-type: none"> <li>▪ Permit(s) that may be required for debris removal work within waterways and wetlands: <ul style="list-style-type: none"> <li>▪ <b>SPGP-19</b> for maintenance of existing non-commercial structures and discharge of fill material between existing bulkheads</li> <li>▪ <b>NWP-3 Maintenance</b> for removal/maintenance of culverts, sediments, or debris accumulated around outfalls, bridges, etc. in wetland areas</li> <li>▪ <b>NWP-22 Removal of Vessels</b> for removal of wrecked, abandoned, or disabled vessels or other man-made obstructions to navigation</li> <li>▪ <b>NWP-33 Temporary Construction, Access, and Dewatering</b> for temporary structures, work, and discharges necessary for construction activities or access fills</li> <li>▪ <b>NWP-37 Emergency Watershed Protection and Rehabilitation</b> for work done under Natural Resources Conservation Service's Emergency Watershed Protection program</li> <li>▪ <b>NWP-38 Cleanup Hazardous/Toxic Waste</b> for containment, stabilization, or removal of hazardous or toxic waste not under Superfund</li> <li>▪ <b>NWP-45 Repair of Uplands Damaged by Discrete Events</b> for activities associated with the restoration of upland areas damaged by storms, floods, or other discrete events</li> </ul> </li> </ul>	<p><b>NJ Department of Environmental Protection (NJDEP)</b> Division of Land Use Regulation 606-633-2289</p>	<ul style="list-style-type: none"> <li>▪ Issues permits for projects that may negatively impact tidal wetlands or tidal and non-tidal waters</li> <li>▪ A tidelands and/or coastal areas permit may be required for debris removal projects that involve excavating, dredging, the discharge of fill or dredge material, or involves structures or work impacting wetlands</li> </ul>
<p><b>National Oceanic and Atmospheric Administration (NOAA)</b> NOAA Fisheries ESA: 978-281-9306 EFH: 978-281-9102</p>	<ul style="list-style-type: none"> <li>▪ Consultation required if debris response involves federal permits and/or funding (USACE permit, FEMA funding, etc.) to comply with: <ul style="list-style-type: none"> <li>▪ Endangered Species Act (ESA) to ensure actions do not adversely affect listed threatened or endangered species or critical habitat for marine species</li> <li>▪ Magnuson-Stevens Fisheries Conservation and Management Act to ensure actions do not adversely affect essential fish habitat</li> </ul> </li> </ul>	<p><b>NJ Department of Environmental Protection (NJDEP)</b> Historic Preservation Office 609-984-0176</p>	<ul style="list-style-type: none"> <li>▪ Assists state and federal agencies in compliance with the National Historic Preservation Act</li> <li>▪ Consultation required if debris response involves a state or federal agency directly or through funding and/or issuance of permits or licenses (NJDEP or USACE permits, FEMA funding, etc.) and has potential to affect historic properties</li> </ul>
		<p><b>U.S. Fish and Wildlife Service (USFWS)</b> New Jersey Field Office 609-646-9310</p>	<ul style="list-style-type: none"> <li>▪ Consultation with New Jersey Field Office required if debris response involves federal permits and/or funding (USACE permit, FEMA funding, etc.) to comply with: <ul style="list-style-type: none"> <li>▪ ESA to ensure actions do not adversely affect listed threatened or endangered species or critical habitat for land and freshwater species and certain marine species such as manatee</li> <li>▪ Coastal Barrier Resources Act to ensure actions do not encourage development on coastal barriers along the Atlantic coast</li> </ul> </li> </ul>



## 5. Organization Contact Information

### State Agencies

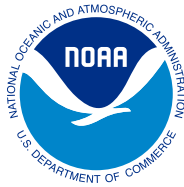
Agency	Division	Topic	Point of Contact	Phone	Email
New Jersey Department of Environmental Protection (NJDEP)	-	Environmental Emergencies	Environmental Emergency 24-hr hotline	1-877-927-6337	-
	Division of Land Resource Protection	Debris Removal	Colleen Keller, Assistant Director	609-984-0846	colleen.keller@dep.nj.gov
	Division of Solid and Hazardous Waste	Debris Removal	Suzanne Biggins, State Contract Manager	609-433-0741	suzanne.biggins@dep.nj.gov
	Emergency Management Program	Emergency Management	Robert VanFossen, Director	609-780-6899	robert.vanfossen@dep.nj.gov
			Anthony Carl, Emergency Response Specialist	201 954-6283	anthony.carl@dep.nj.gov
	Historic Preservation Office	Historic Preservation	General Contact	609-984-0176	-
	Office of Natural Resource Restoration	Environmental Restoration	Josh Hitchner, Environmental Specialist	609-458-5188	joshua.hitchner@dep.nj.gov
Tony Lavarone, Project Manager			609-575-9254	tony.iavarone@dep.nj.gov	
New Jersey Department of Transportation (NJDOT)	Office of Maritime Resources	Debris Management	William Henderson, Project Engineer	609-963-2107	william.henderson@dot.nj.gov
			Jasmin Molina, Program Specialist	609-963-1480	jasmin.molina@dot.nj.gov
New Jersey Motor Vehicle Commission	Abandoned Title Unit	Abandoned Vessel Disposition	General Contact	888-486-3339 or 609-292-6500	-
New Jersey State Police (NJSP)	New Jersey Office of Emergency Management (NJOEM)	Public Assistance Funding	Lt. Sean Talty, State Public Assistance Officer	201-874-2434	sean.talty@njsp.org
			Rosa Karina Torres Verges, Public Assistance Unit Compliance Specialist	609-649-7819	rosa.torres-verges@njsp.org
Rutgers University	Jacques Cousteau National Estuarine Research Reserve (JCNERR)	Debris within JCNERR	Lisa Auermuller, Assistant Manager	609-249-8820	auernull@marine.rutgers.edu

## Federal Agencies

Agency	Division	Topic	Point of Contact	Phone	Email
Bureau of Safety and Environmental Enforcement	Marine Trash and Debris Program	Planning and Coordination	James Sinclair, Marine Ecologist	504-736-2789	james.sinclair@bsee.gov
Federal Emergency Management Agency (FEMA)	Region II	Recovery Division	Jennifer DiLorenzo, Branch Chief	202-805-8866	jennifer.dilorenzo@fema.dhs.gov
			Reginald Thomas, Acting Deputy Branch Chief	908-249-3373	reginald.thomas@fema.dhs.gov
		External Affairs	General Contact	-	FEMA-R2-ExternalAffairs@fema.dhs.gov
National Oceanic and Atmospheric Administration (NOAA)	National Marine Fisheries Service or NOAA Fisheries	EFH Consultation	Karen Greene, Chief, Mid-Atlantic Branch	978-559-9871	karen.greene@noaa.gov
			Jessie Murray, Marine Habitat Resource Specialist	732-872-3316	jessie.murray@noaa.gov
		ESA Consultation	General Contact	978-281-9306	nmfs.gar.esa.section7@noaa.gov
			William Barnhill, Fishery Biologist	978-282-8460	william.barnhill@noaa.gov
	National Ocean Service, Office of Response and Restoration, Emergency Response Division	Emergency Response	Frank Csulak, USCG District 5 Scientific Support Coordinator	732-371-1005	frank.csulak@noaa.gov
			John Tarpley, Regional Operations Branch Chief	206-526-6338	john.tarpley@noaa.gov
	National Ocean Service, Office of Response and Restoration, Marine Debris Division	Response Capabilities and Coordination	Katie Morgan, Mid-Atlantic Regional Coordinator	240-215-7047	katie.morgan@noaa.gov
National Ocean Service, Office of Coast Survey	Navigation and Preparation Response	Ryan Wartick, Mid-Atlantic Navigation Manager	571-305-0995	ryan.wartick@noaa.gov	
Natural Resources Conservation Service (NRCS)	Emergency Watershed Protection (EWP) Program	EWP Information	Hilary Trotman, Civil Engineer	732-537-6071	hilary.trotman@usda.gov

**Federal Agencies Continued**

Agency	Division	Topic	Point of Contact	Phone	Email
U.S. Army Corps of Engineers (USACE)	Philadelphia District	Emergency Management	James V. Monsu, Chief	215-656-6757	james.v.monsu@usace.army.mil
		Regulatory Program	Michael Yost, Biologist	267-240-5278	michael.d.yost@usace.army.mil
	Robert Youhas, Biologist		267-854-2049	robert.youhas@usace.army.mil	
	New York District	Operations	Reggie Eakins, Acting Deputy Chief	913-306-7946	reggie.l.eakins@usace.army.mil
		Physical Support	Richard Thorsen, Chief	201-309-2350	richard.thorsen@usace.army.mil
-		William Lyness, Marine Superintendent	201-309-2360	william.f.lyness@usace.army.mil	
U.S. Coast Guard (USCG)	-	Oil or Hazardous Material Release	National Response Center (NRC)	800-424-8802	-
	District 1		Sector New York Command Center	718-354-4120	-
			LCDR Mike Persun, Sector New York Incident Management	978-354-4346	michael.m.persun@uscg.mil
			Cornell Rosiu, Northeast Region Environmental Protection Specialist	617-223-8434	cornell.j.rosiu@uscg.mil
			Elisha Cook, Mid-Atlantic Region Environmental Protection Specialist	757-398-7780	elisha.fs.cook@uscg.mil
	District 5		Sector Delaware Bay Command Center	215-271-4807	-
U.S. Environmental Protection Agency (EPA)	Region II	Regional Response Teams	Steve Touw, Regional Response Team Coordinator	908-420-4458	touw.steve@epa.gov
		Potential to release oil or hazardous substance	National Response Center (NRC)	800-424-8802	-
			Region 2 Regional EOC	732-906-6850 732-321-4370	-
U.S. Fish and Wildlife Service (USFWS)	Ecological Services Program	Delaware Bay Estuary Project	Main Line	302-653-9152	-



Gina M. Raimondo  
United States Secretary of Commerce

Dr. Richard W. Spinrad  
Under Secretary of Commerce for Oceans and Atmosphere  
and NOAA Administrator

Nicole R. LeBoeuf  
Assistant Administrator for Ocean Services  
and Coastal Zone Management