

# Prince George's County **CLEAN AND BEAUTIFUL**



### INSTRUCTIONS:

As you read this interactive story of *Spencer The Sprout* and his quest to keep Prince George's County Clean and Beautiful, you will have challenges to complete along the way. You can gain points throughout this activity book by:

- Completing activities
- Completing bonus achievements
- Finding hidden letters to solve the word scramble

Use the points tracker below to keep track of your points along the way.

### POINTS TRACKER

MISSION	POINTS	BONUS PTS.	TOTAL POINTS
MISSION 1: WORD SCRAMBLE			
MISSION 2: LOOKING BACK TO MOVE FORWARD			
MISSION 3: KEEPING IT CLEAN IN THE NEIGHBORHOOD			
MISSION 4: POLLUTION PREVENTION POLICY			
MISSION 5: USING ART AS A TOOL FOR ENGAGEMENT			
MISSION 6: INSPIRE OTHERS TO ACT			
MISSION 7: IS IT TRUE OR FALSE			

### MISSION 1: WORD SCRAMBLE

Find mystery letters hidden throughout the pages and place one letter on each blank space.  
Next unscramble the mystery word. Solve the hidden scramble for +10 points

\_\_\_\_\_

Unscramble the word here: \_\_\_\_\_

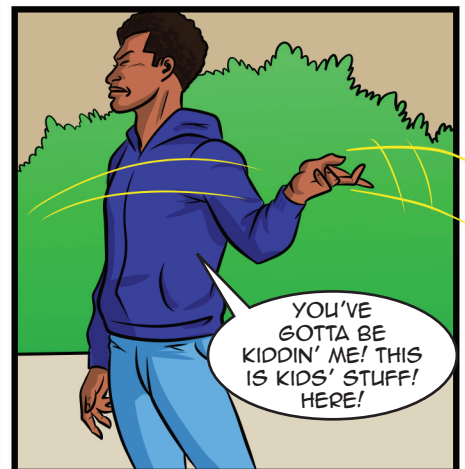
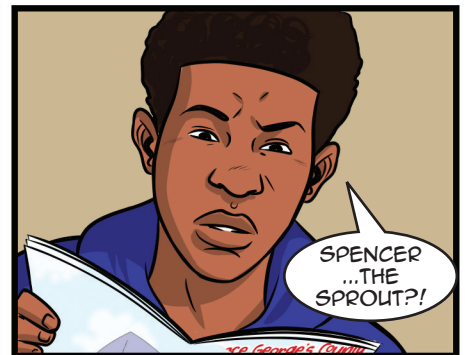
ONE DAY AFTER SCHOOL, KIM AND RENALDO ARE READING AN ACTIVITY BOOK ON POLLUTION WHEN...

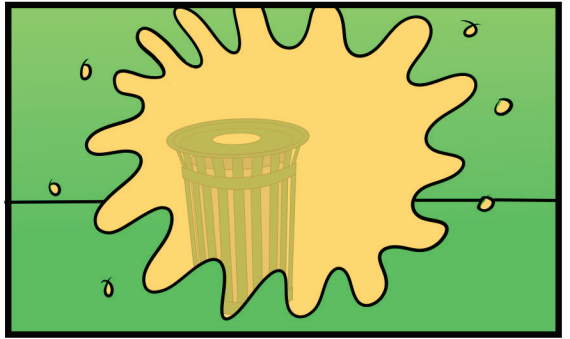
# WASHINGTON STATE HIGH SCHOOL

HEY, WHAT ARE YA'LL DOIN'?

WE'RE LOOKING AT THIS BOOK ABOUT HOW LITTER IS NOT ONLY AFFECTING DIFFERENT PARTS OF PRINCE GEORGE'S COUNTY BUT ALSO CAUSES HARM TO ALL OF THE ANIMALS AND MARINE ANIMALS OF THE CHESAPEAKE BAY WATERSHED.

IF YOU MADE IT TO HOMEROOM YOU WOULD HAVE GOTTEN ONE TOO!



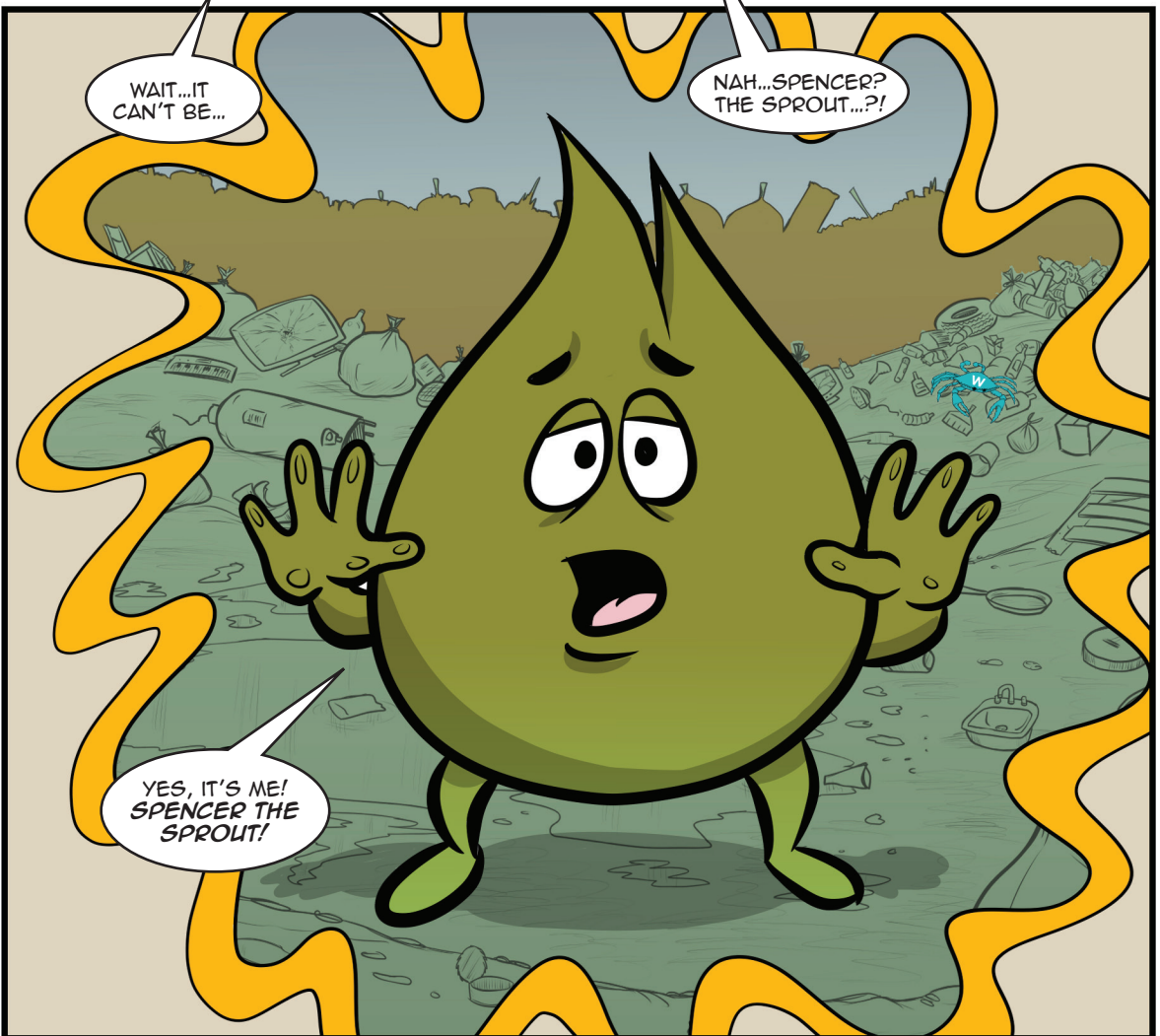


SHAWN,  
WHAT DID  
YOU DO?!

I DIDN'T  
DO ANYTHING!



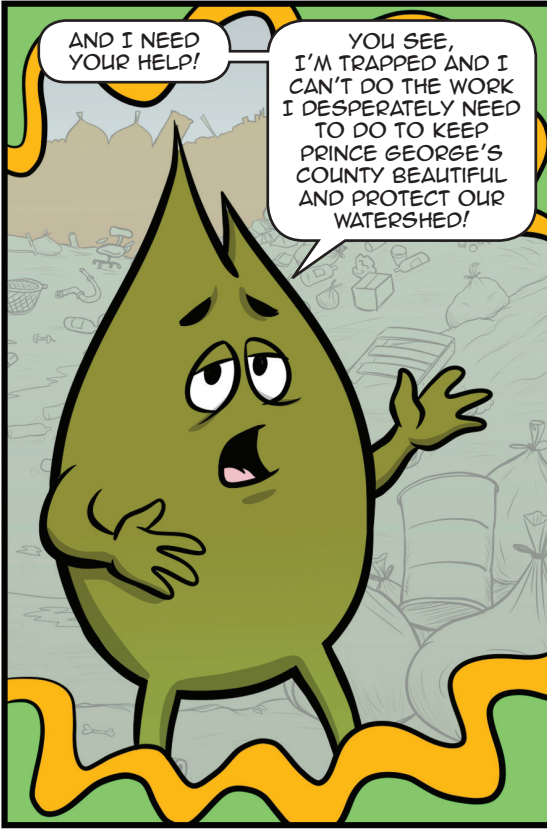
HOLD UP...  
WHAT'S THAT IN  
THE LIGHT...



WAIT...IT  
CAN'T BE...

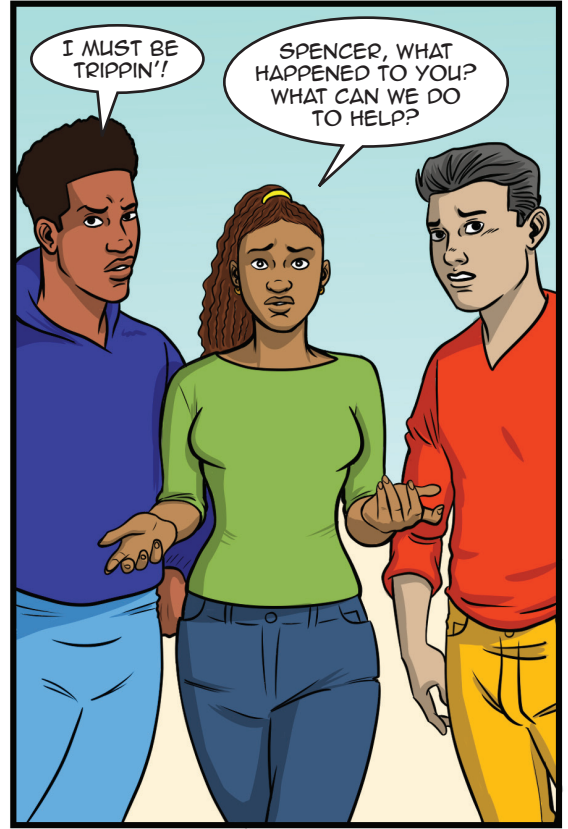
NAH...SPENCER?  
THE SPROUT...?!

YES, IT'S ME!  
SPENCER THE  
SPROUT!



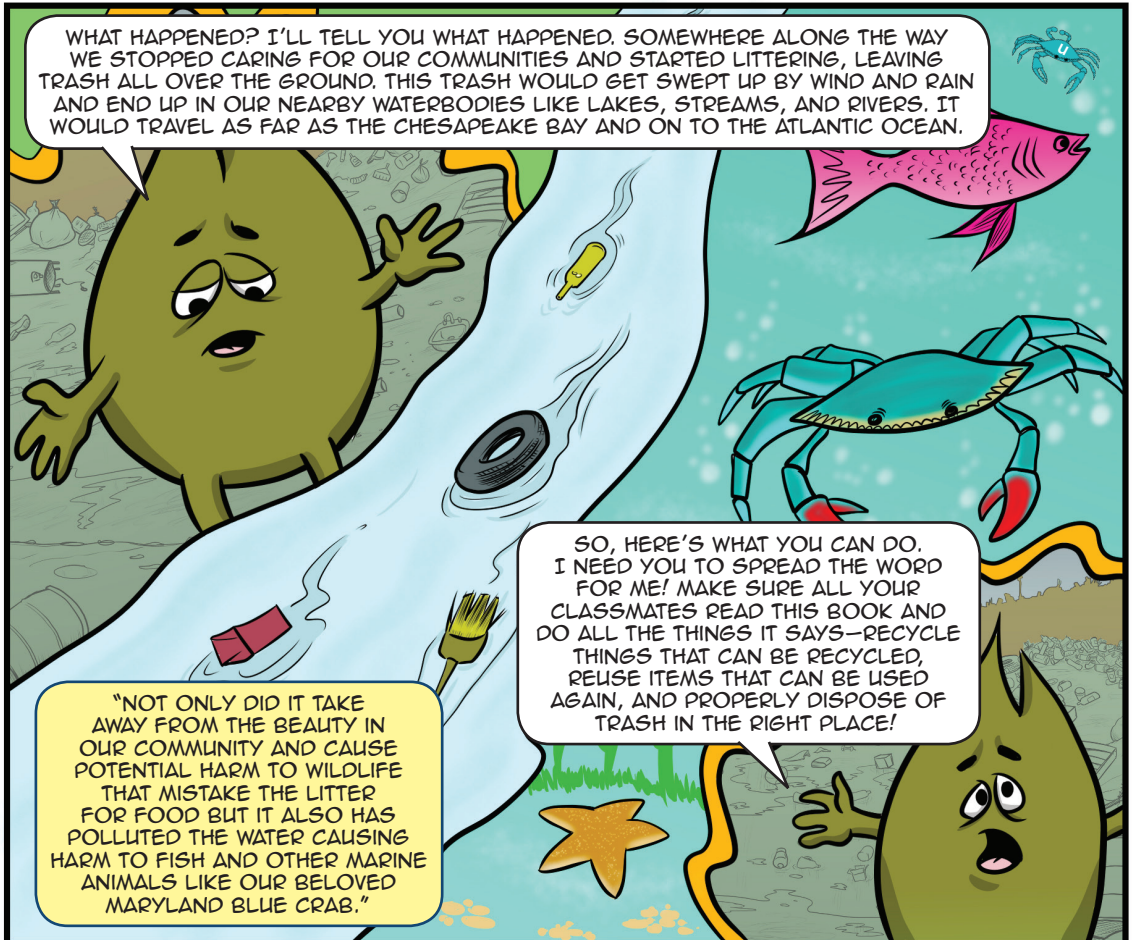
AND I NEED YOUR HELP!

YOU SEE, I'M TRAPPED AND I CAN'T DO THE WORK I DESPERATELY NEED TO DO TO KEEP PRINCE GEORGE'S COUNTY BEAUTIFUL AND PROTECT OUR WATERSHED!



I MUST BE TRIPPIN'!

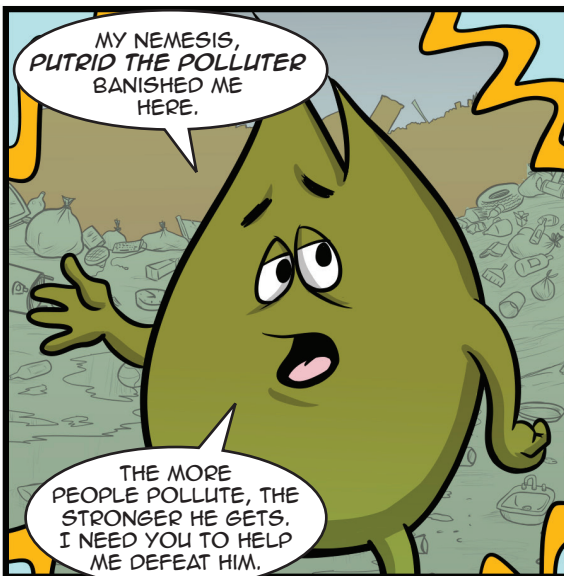
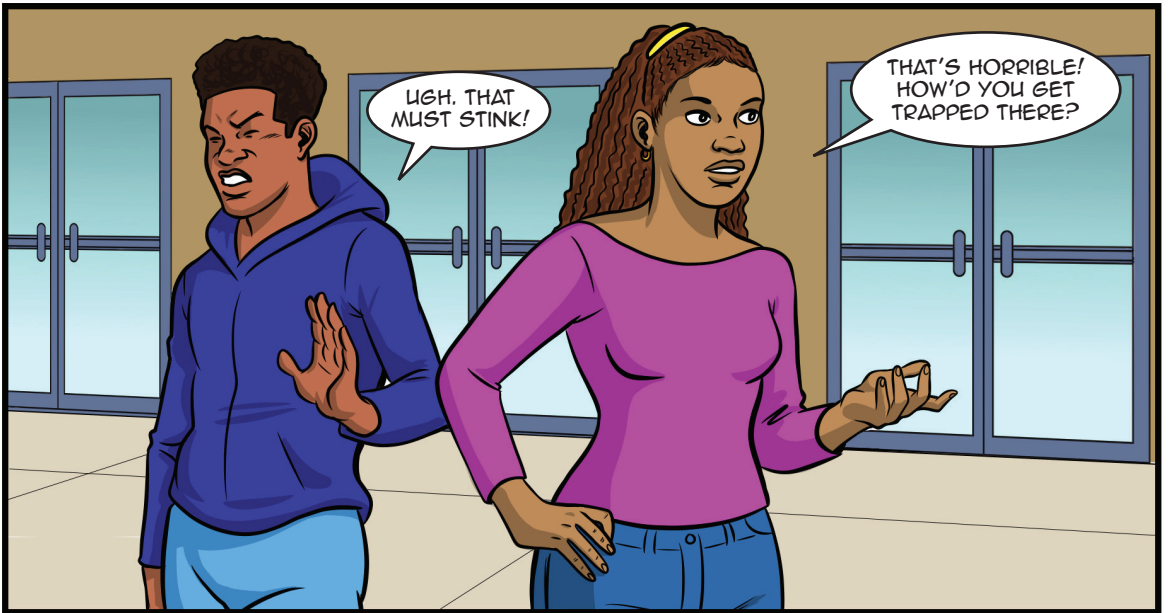
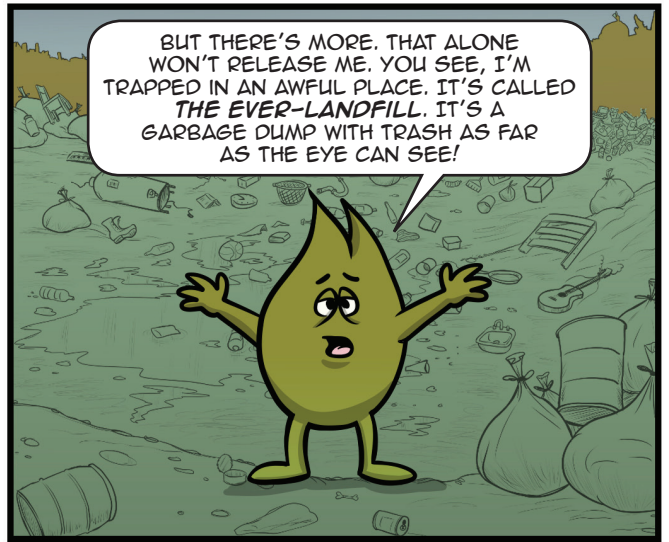
SPENCER, WHAT HAPPENED TO YOU? WHAT CAN WE DO TO HELP?

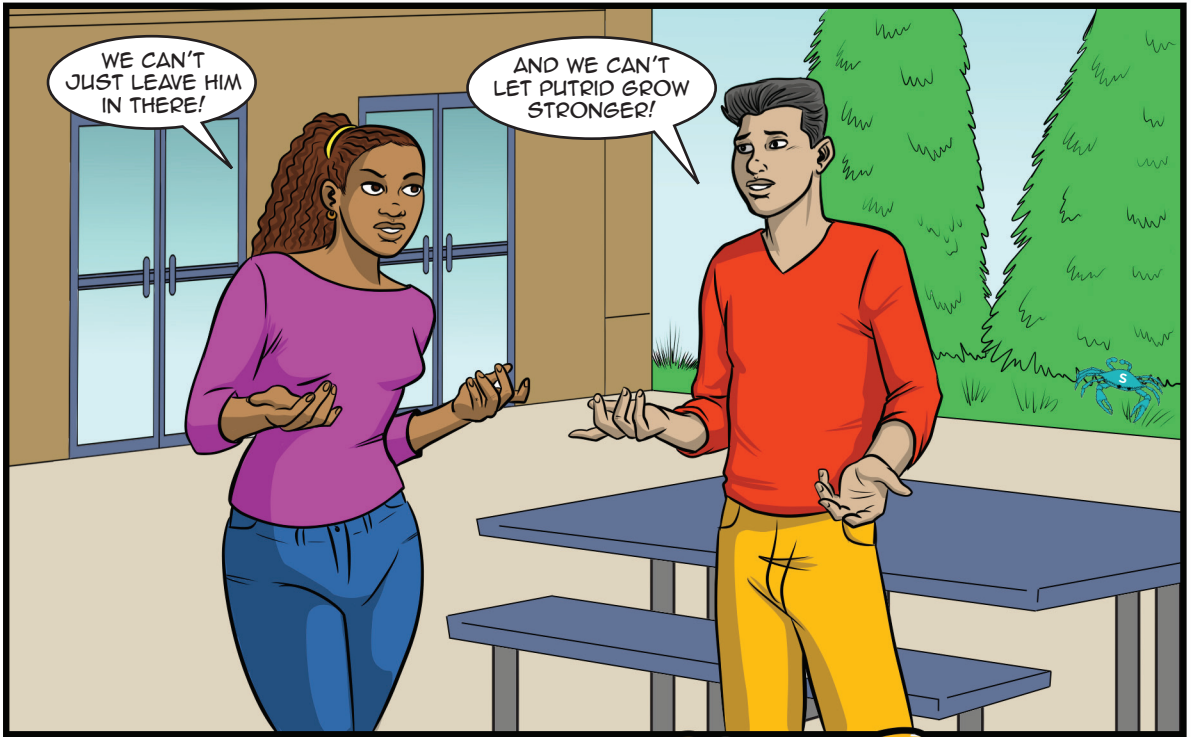


WHAT HAPPENED? I'LL TELL YOU WHAT HAPPENED. SOMEWHERE ALONG THE WAY WE STOPPED CARING FOR OUR COMMUNITIES AND STARTED LITTERING, LEAVING TRASH ALL OVER THE GROUND. THIS TRASH WOULD GET SWEEPED UP BY WIND AND RAIN AND END UP IN OUR NEARBY WATERBODIES LIKE LAKES, STREAMS, AND RIVERS. IT WOULD TRAVEL AS FAR AS THE CHESAPEAKE BAY AND ON TO THE ATLANTIC OCEAN.

"NOT ONLY DID IT TAKE AWAY FROM THE BEAUTY IN OUR COMMUNITY AND CAUSE POTENTIAL HARM TO WILDLIFE THAT MISTAKE THE LITTER FOR FOOD BUT IT ALSO HAS POLLUTED THE WATER CAUSING HARM TO FISH AND OTHER MARINE ANIMALS LIKE OUR BELOVED MARYLAND BLUE CRAB."

SO, HERE'S WHAT YOU CAN DO. I NEED YOU TO SPREAD THE WORD FOR ME! MAKE SURE ALL YOUR CLASSMATES READ THIS BOOK AND DO ALL THE THINGS IT SAYS—RECYCLE THINGS THAT CAN BE RECYCLED, REUSE ITEMS THAT CAN BE USED AGAIN, AND PROPERLY DISPOSE OF TRASH IN THE RIGHT PLACE!





WE CAN'T JUST LEAVE HIM IN THERE!

AND WE CAN'T LET PUTRID GROW STRONGER!



HE'S RIGHT. IF PUTRID HAS HIS WAY, PRINCE GEORGE'S COUNTY WILL LOOK JUST LIKE EVER-LANDFILL...

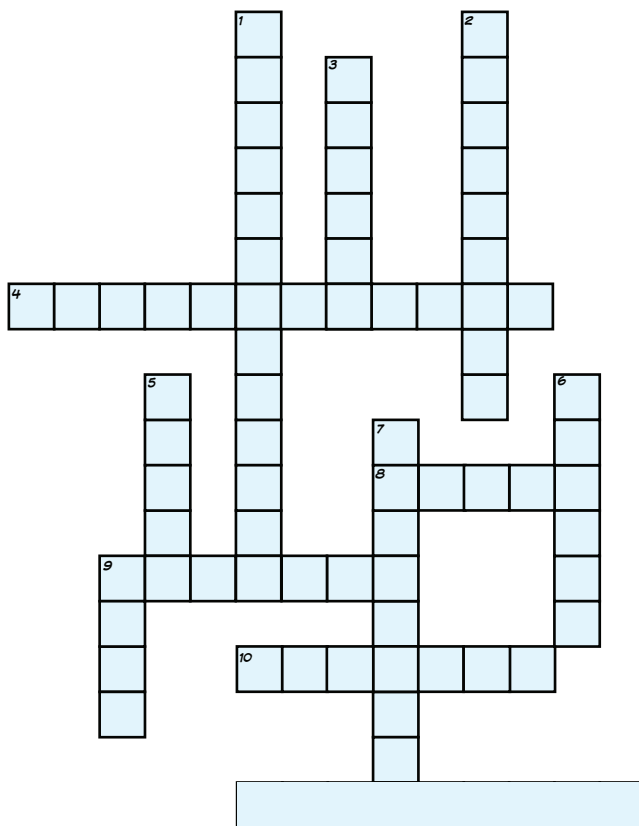
...I DON'T WANT TO LIVE IN A DUMP. I'M DOWN.

GREAT! BUT BEFORE I CAN SEND YOU ON YOUR FIRST MISSION, YOU'LL NEED TO LEARN THE BASICS...



## MISSION 2: LOOKING BACK TO MOVE FORWARD

Complete this crossword puzzle to review what we have learned.



### DOWN

1. The largest watershed in the United States that covers six states and the District of Columbia
2. Anything that can cause harm to the environment
3. To decrease or eliminate the use of an item
5. To use something more than once for the same or new purpose
6. Trash that is left on the ground or in other open areas
7. A place where all rainwater will drain and collect at the same place
9. Along with the wind this form of precipitation can carry pollution to our nearby waterways

### ACROSS

4. Trash that ends up in our waterways
8. Residents, businesses and organizations can \_\_\_\_\_ a stream in Prince George's County to help reduce litter
9. To take something old and turn it into a new item that can be used
10. These type of bottles and bags are a major source of pollution in our nearby waterways
11. Prince George's County uses this type of litter trap to trap litter and other forms of debris in a stream before it reaches the Anacostia River

### POINTS CHALLENGE:

+1 point for solving each word.

Complete the entire crossword puzzle for 4 bonus points.



### MISSION 3: KEEPING IT CLEAN IN THE NEIGHBORHOOD

Organize a cleanup for your street and ask others in your household to join you. Prince George's County has a program, PGCLitterTRAK, that will help you track the type and amount of litter collected during your cleanup. It can be accessed from your smartphone or tablet. For instructions on participating in the PGCLitterTRAK program please review the user manual located at <https://www.princegeorgescountymd.gov/2607/PGCLitterTRAK>

Supplies: \_\_\_Gloves \_\_\_Hand Sanitizer \_\_\_Trash Bags

#### **CONSIDER THE 5 W'S:**

1. Who will join you for the neighborhood cleanup?
2. What are the boundaries for your cleanup area?
3. When is the cleanup happening?
4. Where are you disposing of the trash or taking recyclables after the cleanup?
5. Why is it important to keep your neighborhood clean?

The Prince George's County Department of the Environment's Litter Reduction Program can assist you with your cleanup by providing bags and gloves. If you take any pictures or videos during your cleanup, please tag #pgcsprout on social media.

#### **POST CLEANUP OBSERVATIONS:**

1. Was there more or less litter than you expected to see during the cleanup?
2. What was the most common type of litter you picked up during the cleanup?
3. Was litter concentrated in one area or was it spread throughout the area?
4. Were there trash cans or other disposal options at convenient locations in the area?
5. Did you notice any trash near the storm drain?

#### **POINTS CHALLENGE:**

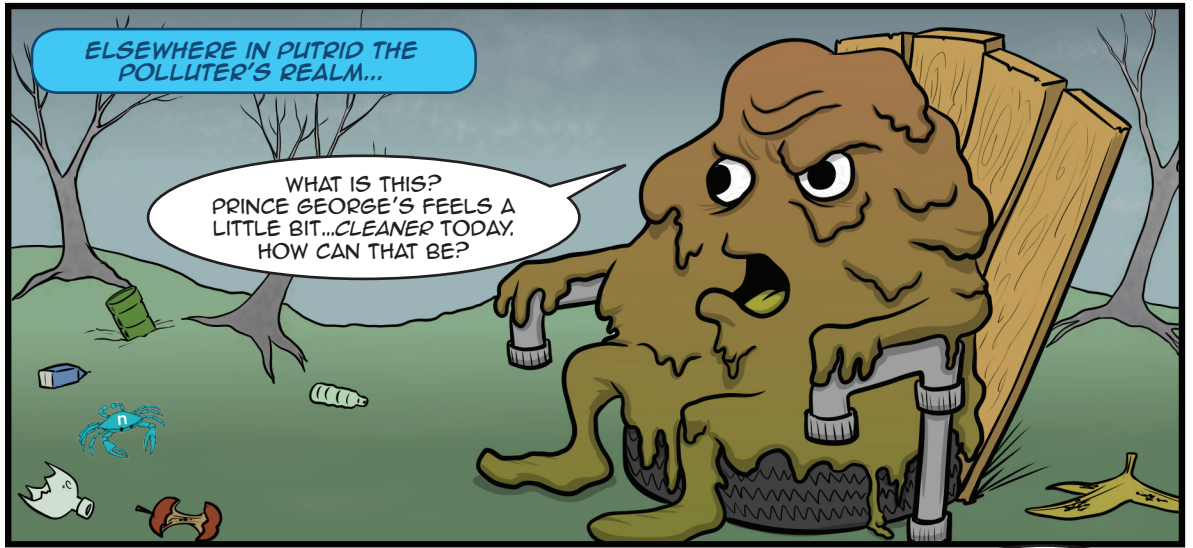
- 1 point for each item of trash disposed properly
- 2 points for each item recycled
- 3 points for each additional person that participates in the cleanup
- 4 points for posting a picture or video from your cleanup on social media and tagging #pgcsprout
- 5 points for tracking the cleanup on the PGCLitterTRAK application

#### **BONUS ACHIEVEMENT:**

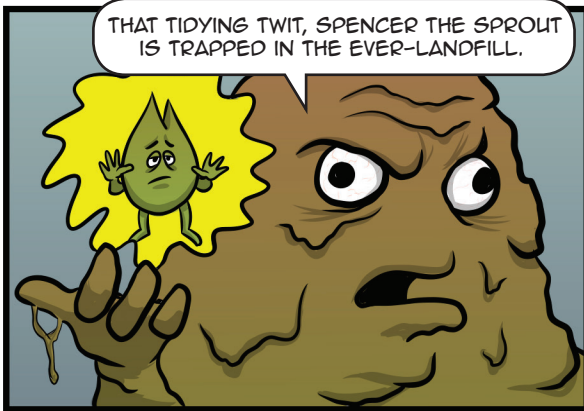
- +5 points: Count the total number of items collected from your cleanup (trash and recyclable)
- +1 point for each person with fewer total items collected than you (trash and recyclable)

ELSEWHERE IN PUTRID THE POLLUTER'S REALM...

WHAT IS THIS?  
PRINCE GEORGE'S FEELS A  
LITTLE BIT...CLEANER TODAY.  
HOW CAN THAT BE?



THAT TIDYING TWIT, SPENCER THE SPROUT  
IS TRAPPED IN THE EVER-LANDFILL.



HE MUST HAVE  
MINIONS DOING  
HIS WORK FOR HIM.  
THEY MUST BE  
STOPPED!



BACK AT THE  
SCHOOL...

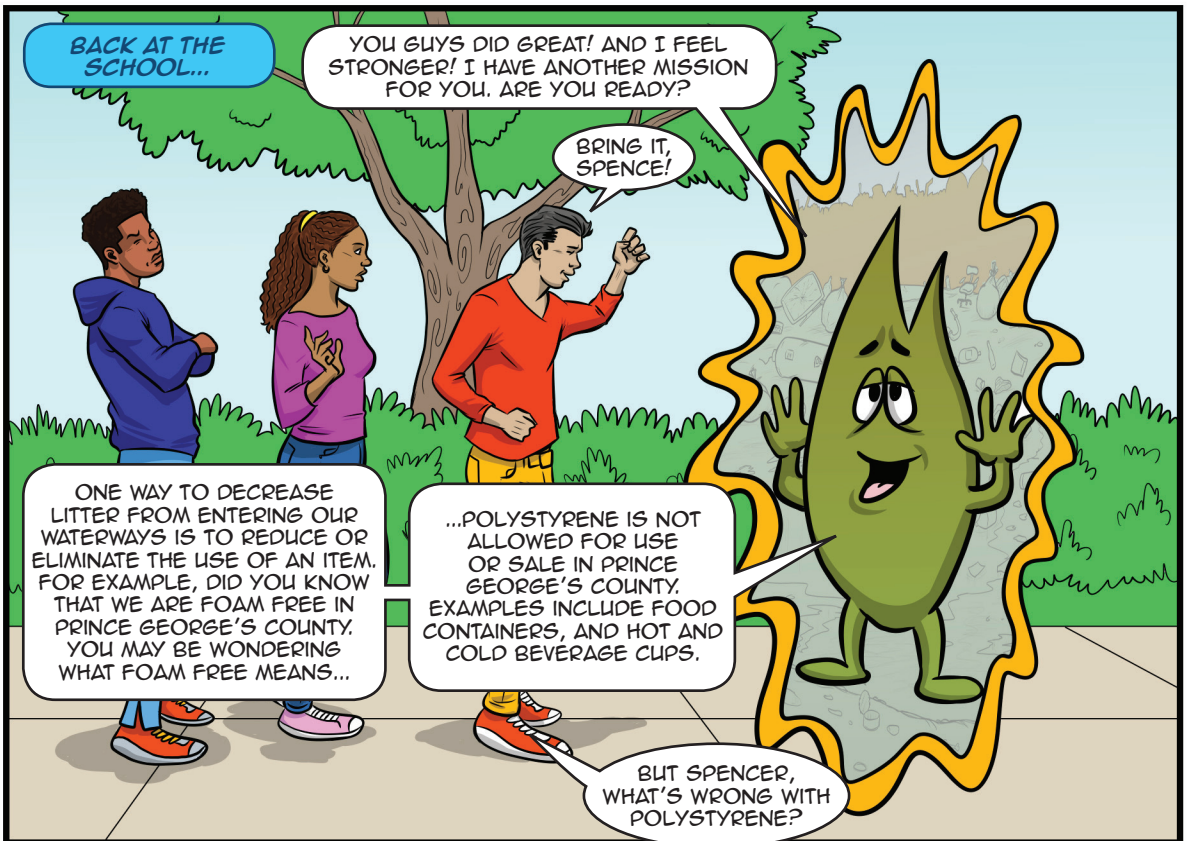
YOU GUYS DID GREAT! AND I FEEL  
STRONGER! I HAVE ANOTHER MISSION  
FOR YOU. ARE YOU READY?

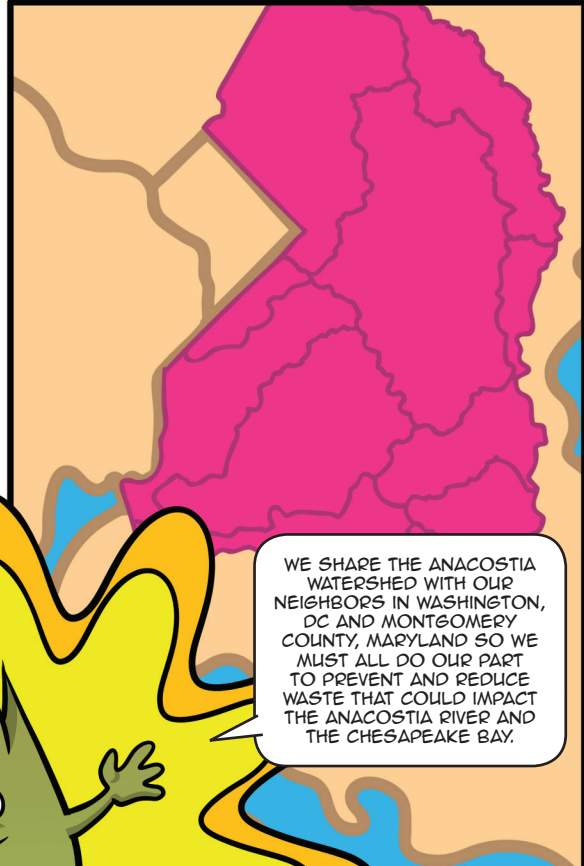
BRING IT,  
SPENCE!

ONE WAY TO DECREASE  
LITTER FROM ENTERING OUR  
WATERWAYS IS TO REDUCE OR  
ELIMINATE THE USE OF AN ITEM.  
FOR EXAMPLE, DID YOU KNOW  
THAT WE ARE FOAM FREE IN  
PRINCE GEORGE'S COUNTY.  
YOU MAY BE WONDERING  
WHAT FOAM FREE MEANS...

...POLYSTYRENE IS NOT  
ALLOWED FOR USE  
OR SALE IN PRINCE  
GEORGE'S COUNTY.  
EXAMPLES INCLUDE FOOD  
CONTAINERS, AND HOT AND  
COLD BEVERAGE CUPS.

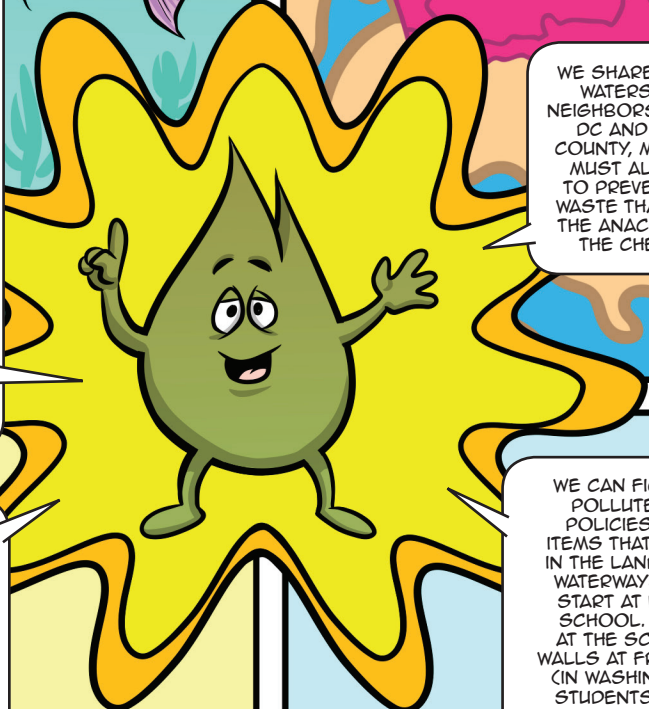
BUT SPENCER,  
WHAT'S WRONG WITH  
POLYSTYRENE?





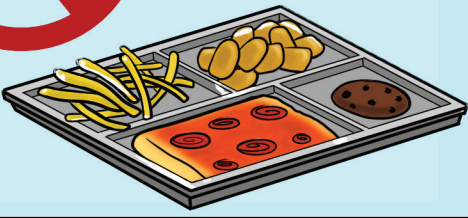
THAT'S A GREAT QUESTION. POLYSTYRENE IS NOT BIODEGRADABLE SO WHEN IT GETS INTO OUR WATERWAYS, IT CAN BREAK DOWN INTO TINY PIECES (BUT NEVER REALLY DISAPPEAR). THESE PIECES CAN BE INGESTED BY FISH OR OTHER ANIMALS ALONG THE WAY. THE FOAM BAN HELPS REDUCE THE AMOUNT OF POLYSTYRENE WASTE ENTERING THE LANDFILL AND LOCAL WATERWAYS, AND YOU WANT TO KNOW SOMETHING ELSE, WE ARE TRAILBLAZERS IN PRINCE GEORGE'S COUNTY BECAUSE THE WHOLE STATE OF MARYLAND HAS FOLLOWED OUR LEAD AND NOW THERE IS A STATEWIDE FOAM BAN.

WE SHARE THE ANACOSTIA WATERSHED WITH OUR NEIGHBORS IN WASHINGTON, DC AND MONTGOMERY COUNTY, MARYLAND SO WE MUST ALL DO OUR PART TO PREVENT AND REDUCE WASTE THAT COULD IMPACT THE ANACOSTIA RIVER AND THE CHESAPEAKE BAY.



IN WASHINGTON, DC AND MONTGOMERY COUNTY, THERE IS A BAG FEE TO ENCOURAGE THE USE OF REUSABLE BAGS INSTEAD OF SINGLE USE PLASTIC BAGS. PLASTIC BAGS WERE OFTEN FOUND DURING CLEANUPS OF OUR LOCAL WATERWAYS. PLASTIC STRAWS ARE BANNED IN PRINCE GEORGE'S COUNTY, AND NEXT DOOR IN THE DISTRICT.

WE CAN FIGHT PUTRID THE POLLUTER BY MAKING POLICIES THAT REDUCE ITEMS THAT WOULD END UP IN THE LANDFILL OR IN OUR WATERWAYS. CHANGE CAN START AT HOME OR EVEN SCHOOL. FOR EXAMPLE, AT THE SCHOOL WITHOUT WALLS AT FRANCIS STEVENS, (IN WASHINGTON, DC) THE STUDENTS CONDUCTED A CAFETERIA WASTE AUDIT. AFTER DISCOVERING HOW MUCH PLASTIC TABLEWARE WAS USED IN THE CAFETERIA AND DISPOSED OF IN THE TRASH, THEY DECIDED TO REDUCE THE USE OF THIS ITEM. THE STUDENTS DEVELOPED A CAMPAIGN AND PLAN TO HAVE FINGER FOOD FRIDAYS. THAT MEANS ALL FOOD SERVED ON FRIDAYS MUST BE FOOD THAT CAN BE EATEN WITH YOUR HANDS.



## MISSION 4: POLLUTION PREVENTION POLICY

According to the Ocean Health Index, these are the top six marine debris items found in cleanups over the last 25 years. Review the items below and develop a policy that would reduce or eliminate at least one of the items from the waste stream. The overwhelming majority of these items started out as litter on land before making its way down our waterways and into the ocean. For an example of a policy go to:

<http://environment.mypgc.us/foamfree>

1. Cigarettes and filters
2. Food wrappers and containers
3. Bottle caps and lids
4. Tableware
5. Plastic bottles
6. Plastic bags

Policy Title \_\_\_\_\_

**Policy Statement:**

**Purpose:** What is the purpose of the policy?

**Scope:** Who and what does the policy cover?

**Responsibility:** Who's responsible for implementing and participating in the policy?

**Impact:** What would be the impact if this policy were implemented?

**Equity:** Will any underserved groups be negatively impacted by the policy? If so, how can the policy be modified to reduce the negative impact?

### POINTS CHALLENGE:

+4 points for each of the six marine debris items addressed by the policy.

+5 points for implementing the policy for a day, either at home or in the classroom.

**BONUS ACHIEVEMENT:** Developing a policy that addresses multiple marine debris items can be difficult. +10 points when you collaborate with your peers to develop a policy that cohesively addresses all six items.



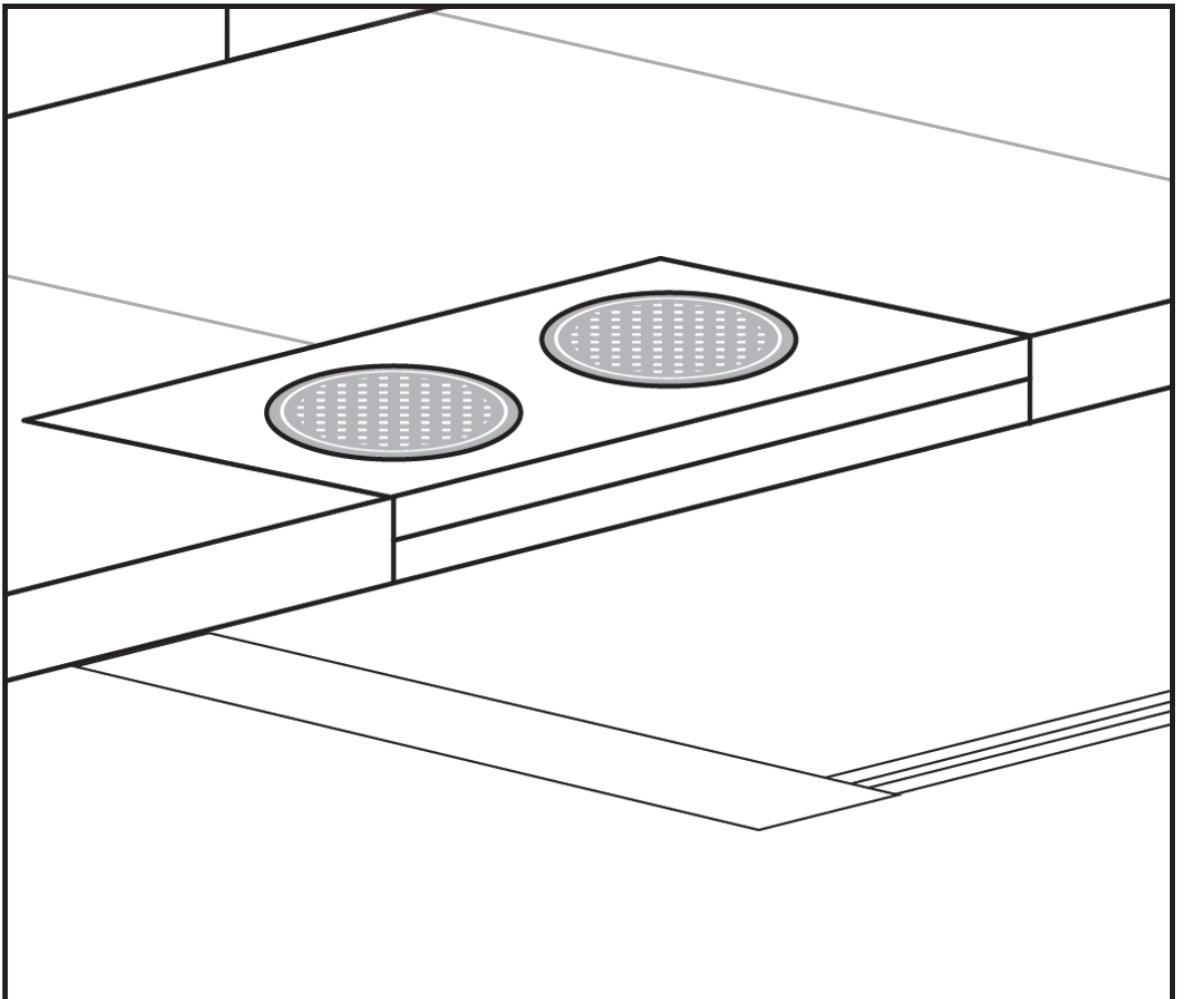
### MISSION 5: USING ART AS A TOOL FOR ENGAGEMENT

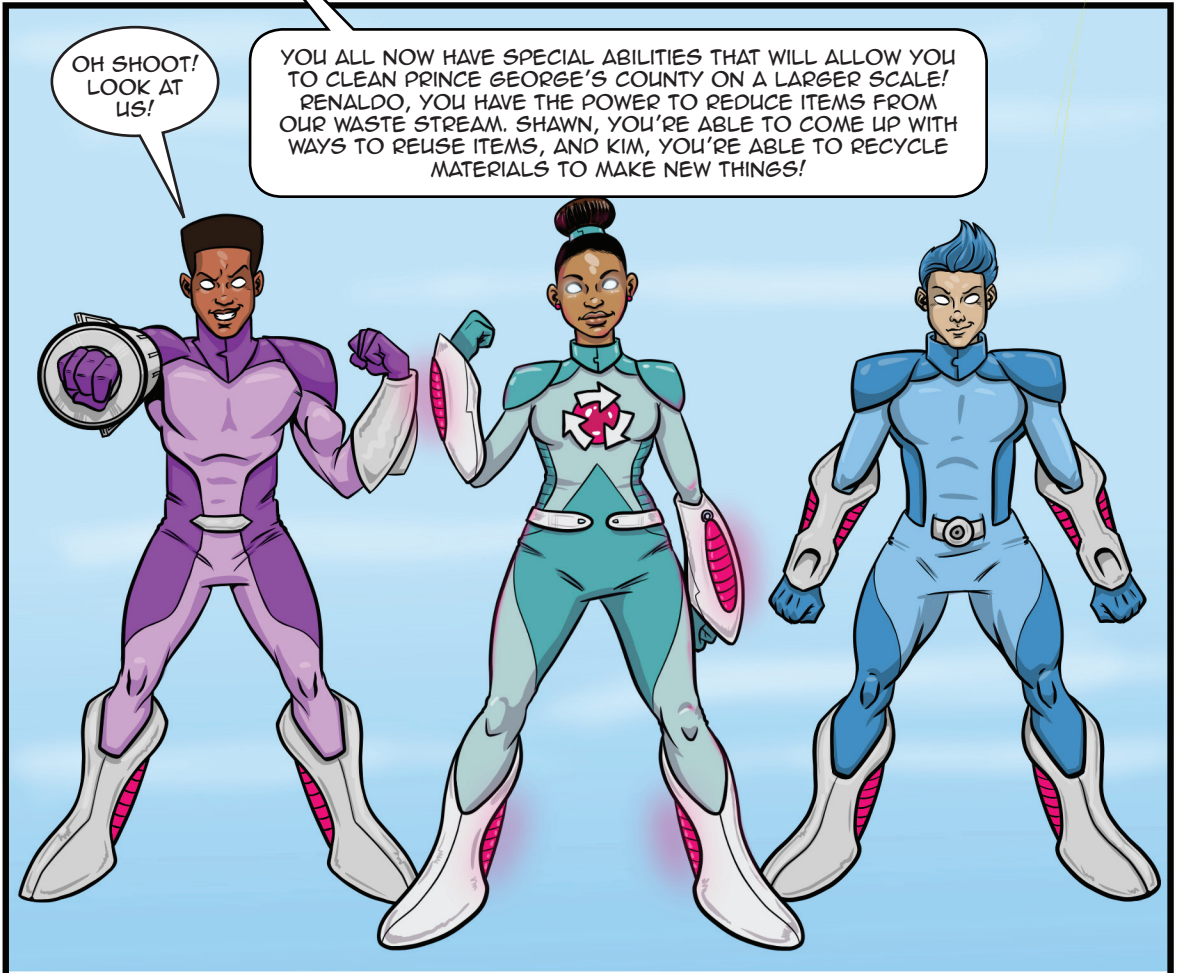
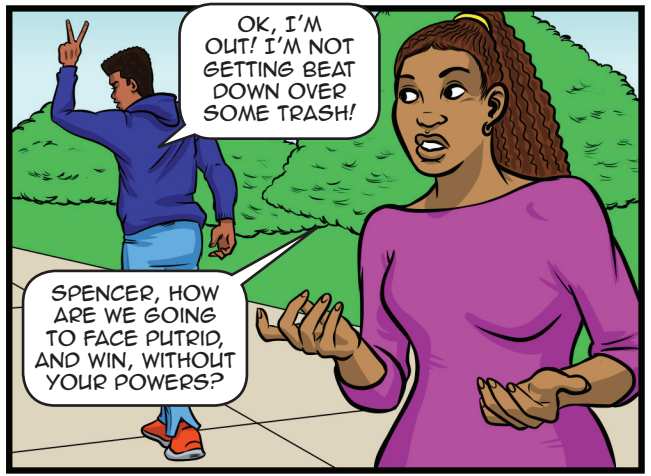
Many people are unaware that our storm drains release water directly into our local waterways like the Anacostia and Potomac Rivers. This means that if people throw trash in or near the storm drain it has a direct route to our rivers.

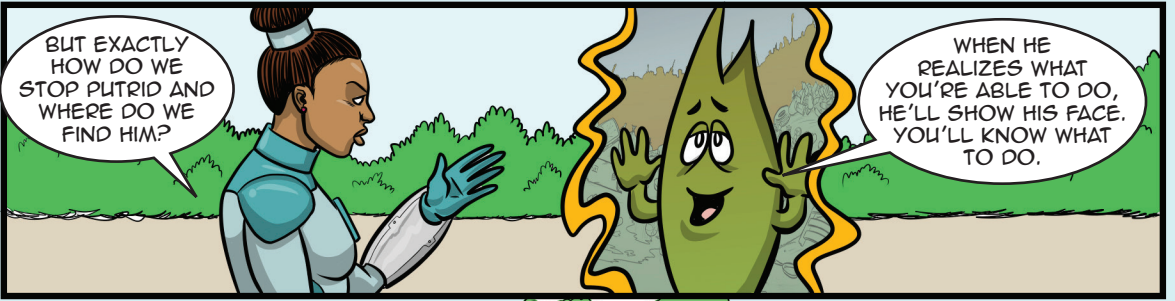
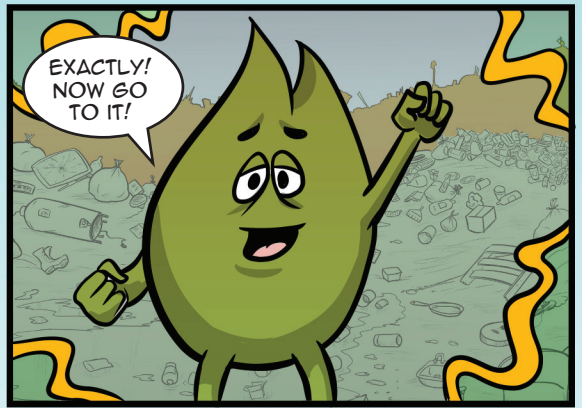
*Activity:* Design your own storm drain. Draw or write a message to discourage people from littering in the storm drain. Let them know where the water goes.

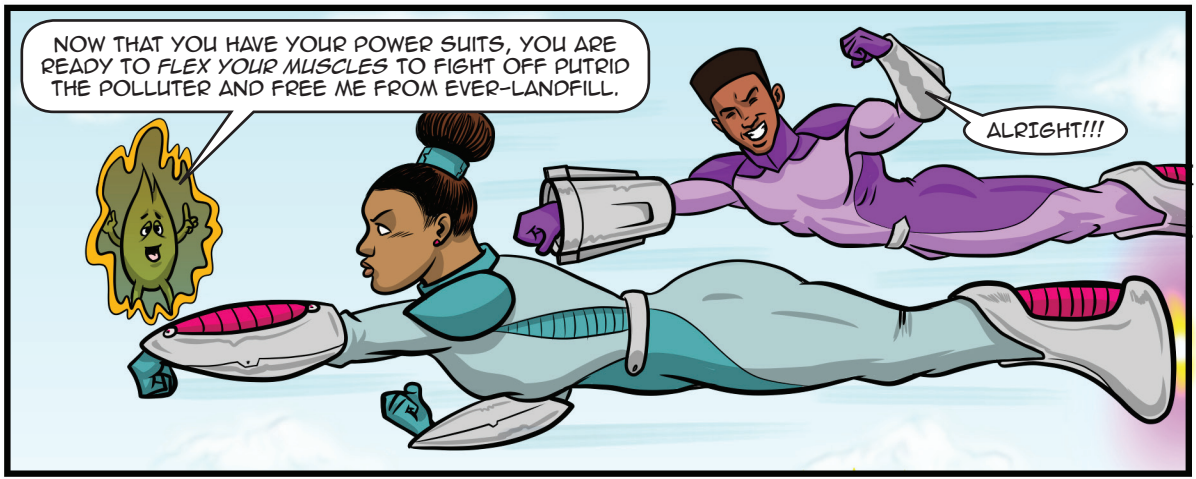
#### POINTS CHALLENGE:

- +3 points for completing the drawing
- +3 points for coloring the drawing







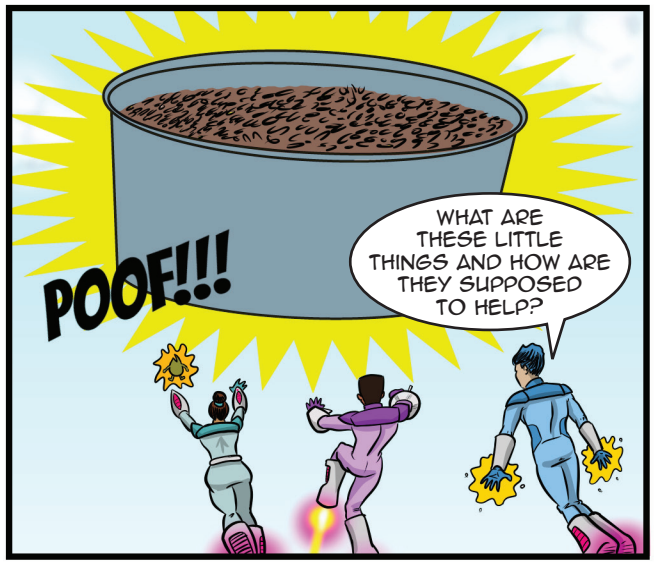


NOW THAT YOU HAVE YOUR POWER SUITS, YOU ARE READY TO FLEX YOUR MUSCLES TO FIGHT OFF PUTRID THE POLLUTER AND FREE ME FROM EVER-LANDFILL.

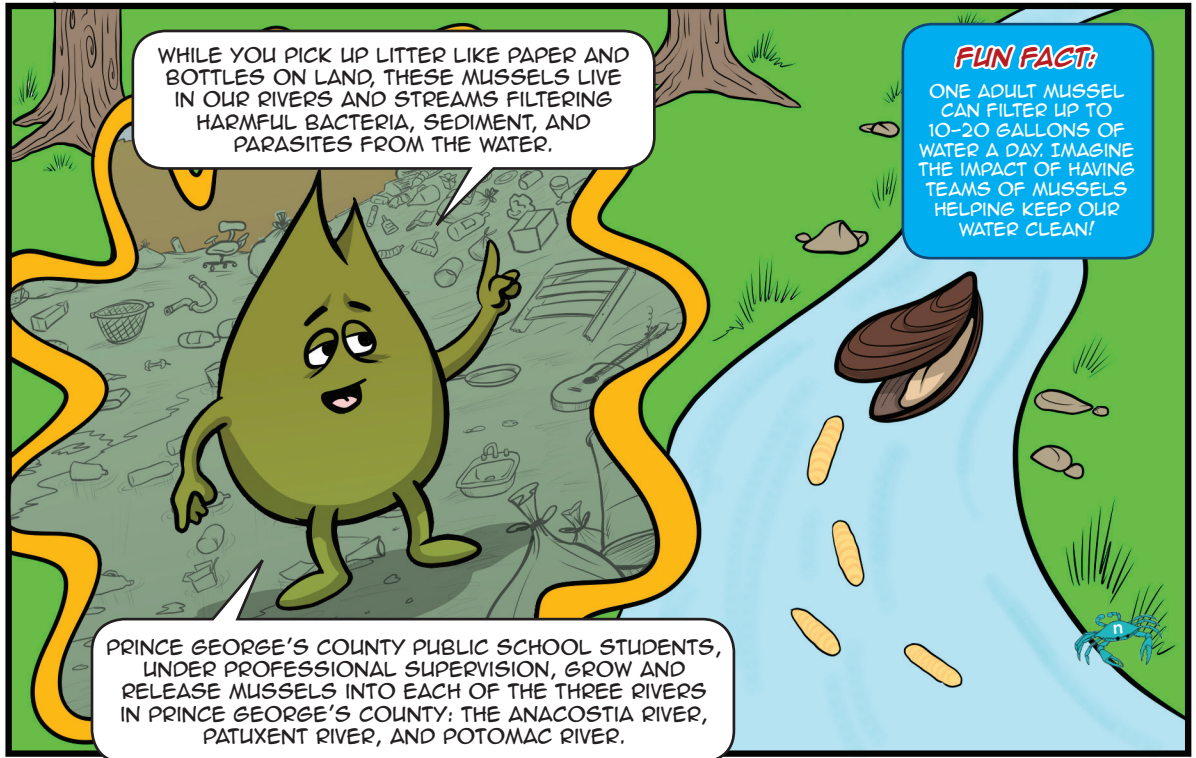
ALRIGHT!!!



NO NOT THOSE MUSCLES...THESE MUSSELS!



WHAT ARE THESE LITTLE THINGS AND HOW ARE THEY SUPPOSED TO HELP?



WHILE YOU PICK UP LITTER LIKE PAPER AND BOTTLES ON LAND, THESE MUSSELS LIVE IN OUR RIVERS AND STREAMS FILTERING HARMFUL BACTERIA, SEDIMENT, AND PARASITES FROM THE WATER.

**FUN FACT:**  
ONE ADULT MUSSEL CAN FILTER UP TO 10-20 GALLONS OF WATER A DAY. IMAGINE THE IMPACT OF HAVING TEAMS OF MUSSELS HELPING KEEP OUR WATER CLEAN!

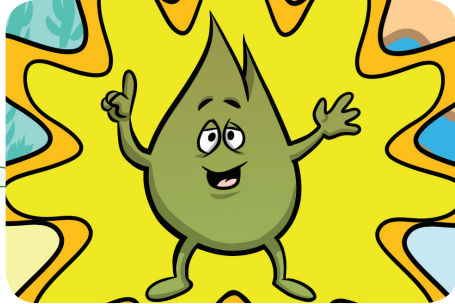
PRINCE GEORGE'S COUNTY PUBLIC SCHOOL STUDENTS, UNDER PROFESSIONAL SUPERVISION, GROW AND RELEASE MUSSELS INTO EACH OF THE THREE RIVERS IN PRINCE GEORGE'S COUNTY: THE ANACOSTIA RIVER, PATUXENT RIVER, AND POTOMAC RIVER.



## MISSION 6: INSPIRE OTHERS TO ACT

Getting rid of Putrid the Polluter is going to take teamwork.  
Which Action Will You Choose?

EACH OF US NEEDS TO COMMIT TO ONE ACTION THAT WILL HELP KEEP PRINCE GEORGE'S COUNTY CLEAN AND BEAUTIFUL. CHOOSE AN ACTION THAT YOU CAN COMMIT TO THAT WILL HAVE A POSITIVE ENVIRONMENTAL IMPACT.  
EXAMPLE: COMMIT TO ONLY USING REUSABLE CUPS AND BOTTLES.



I \_\_\_\_\_ commit to \_\_\_\_\_.

Next, tell others about your commitment and create a social media campaign to get others to make their own. Use the hashtag #pgcsprout on all social media.

**Activity:** Create your social media campaign.

**Purpose:** To inspire others to take action so that we will collectively reduce our impact on the environment.

1. What social media platform(s) will you use?
2. Set a goal of how many people you want to follow your lead.
3. Share your commitment via a status update, picture, meme, or video.
4. Share with others and encourage them to make their own commitment.
5. Who is your target audience?
6. What hashtags will you use?
7. Come up with a slogan, or rap.

### POINTS CHALLENGE:

+5 points for posting your commitment on social media

### BONUS ACHIEVEMENT:

+2 Points for tagging #pgcsprout

+3 Points for each follow-up post

+3 Points for sharing/retweeting other #pgcsprout posts

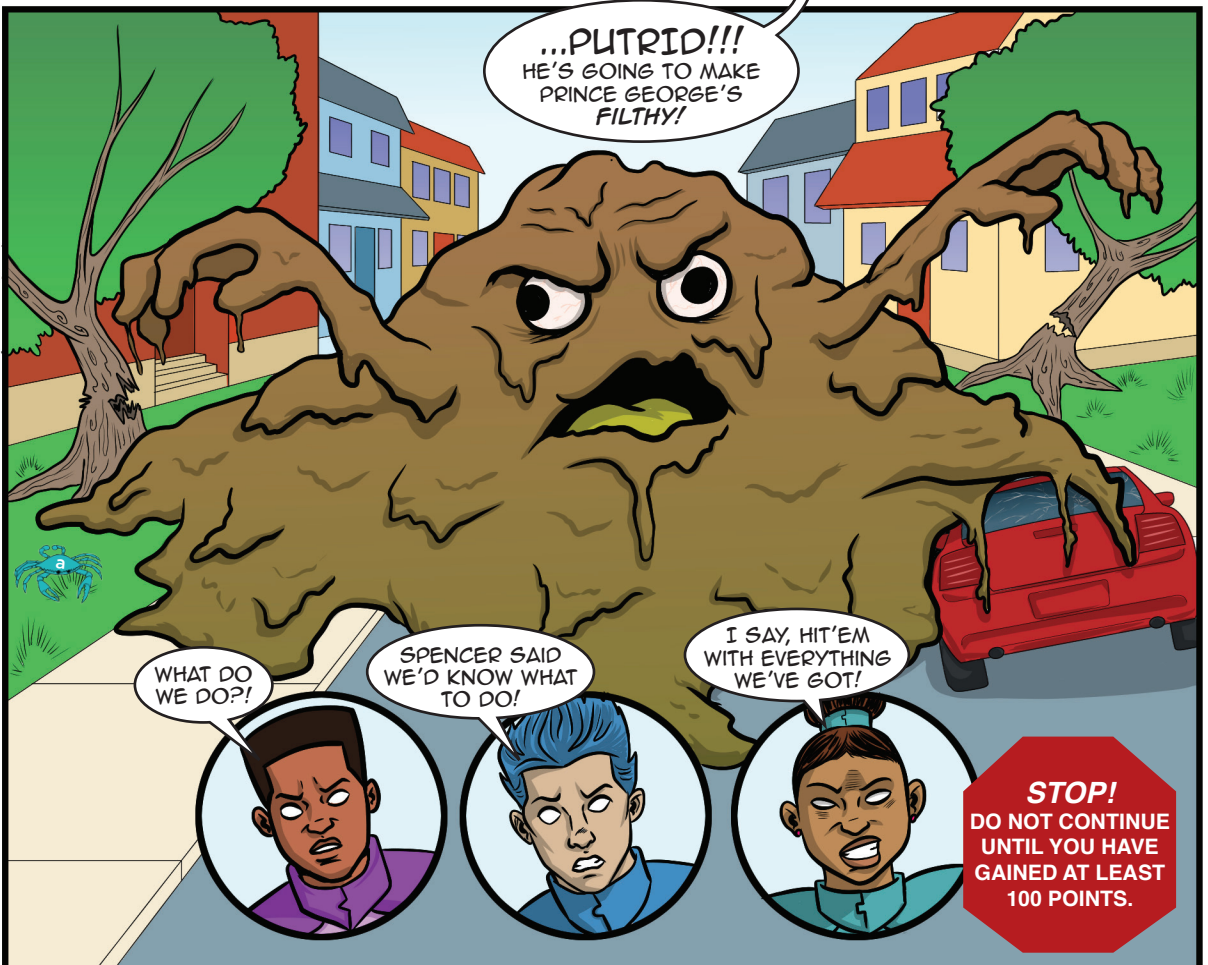
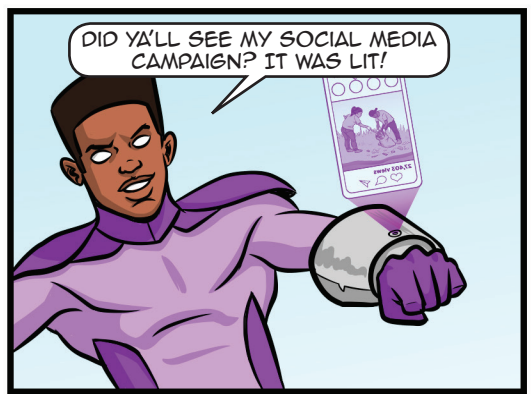
## MISSION 7: IS IT TRUE OR FALSE

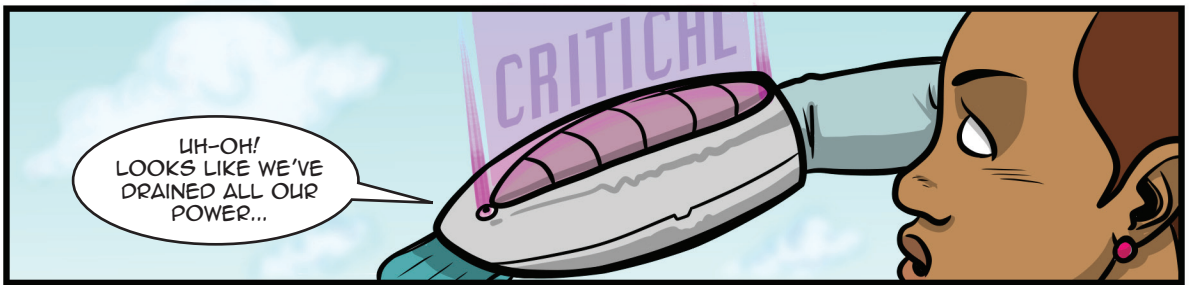
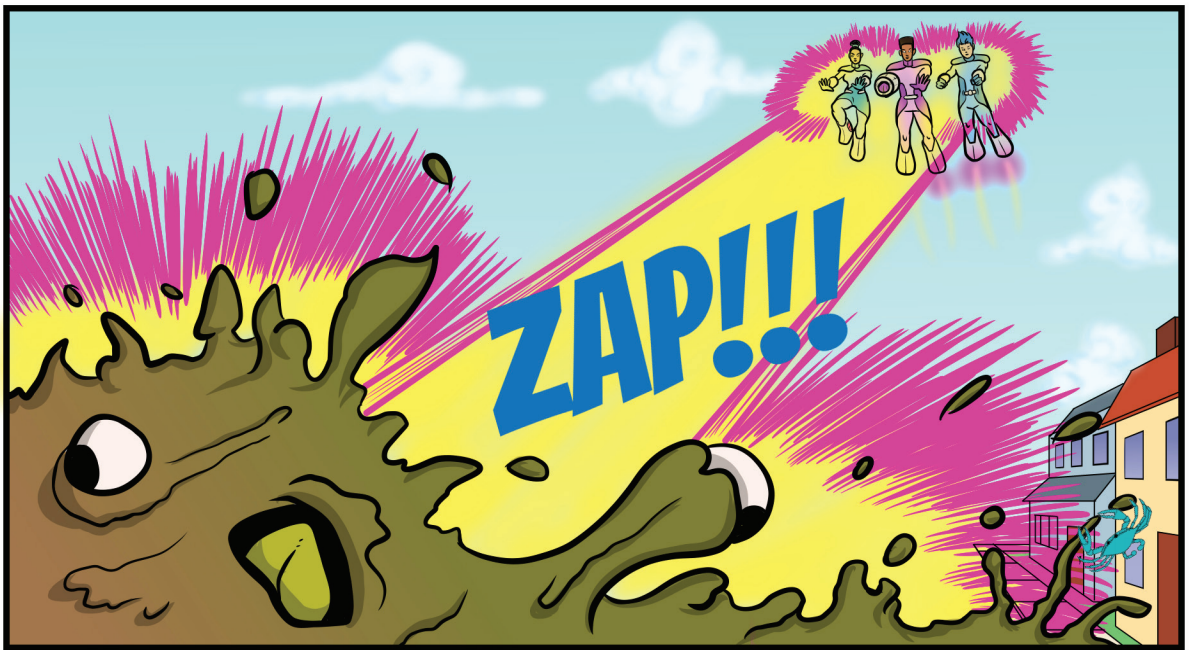
Now it's time to see how much you really know. Evaluate each statement below and put a check mark to indicate whether it is true or false.

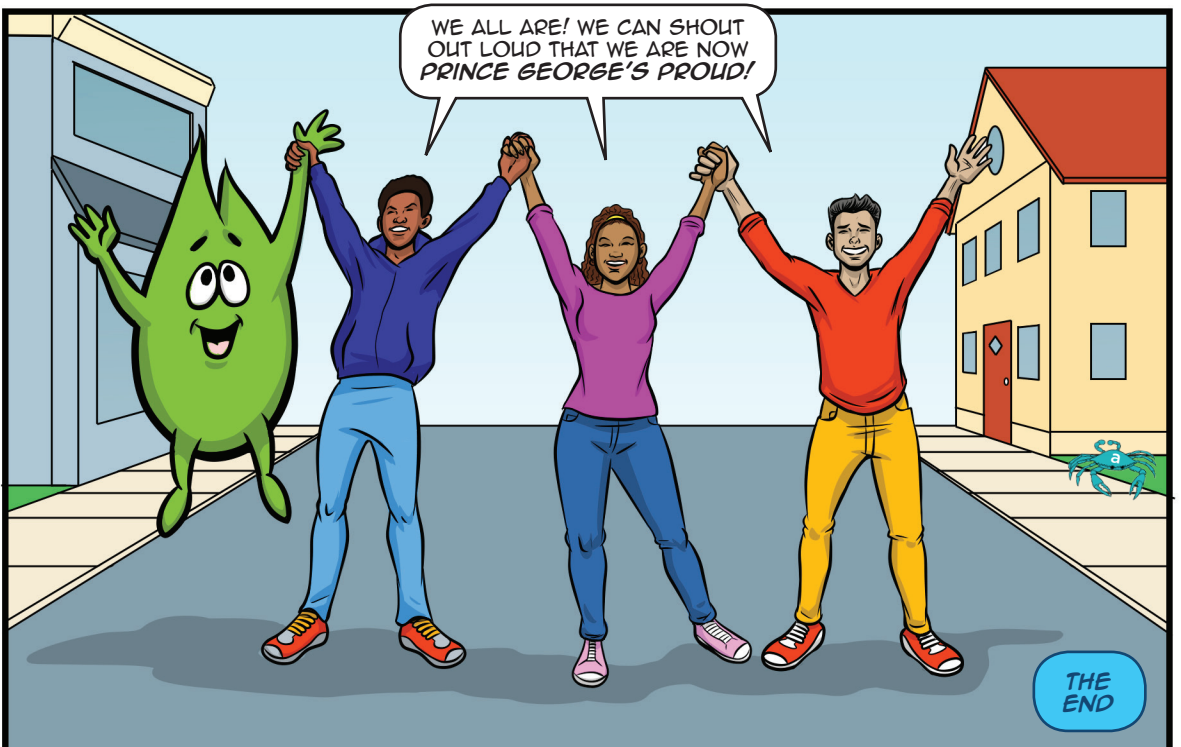
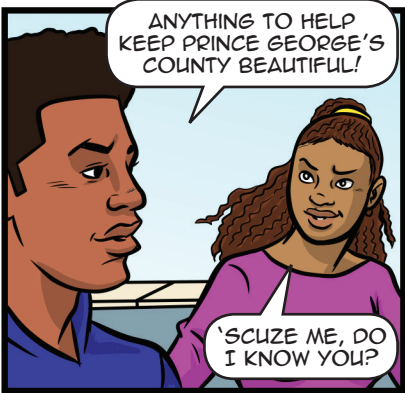
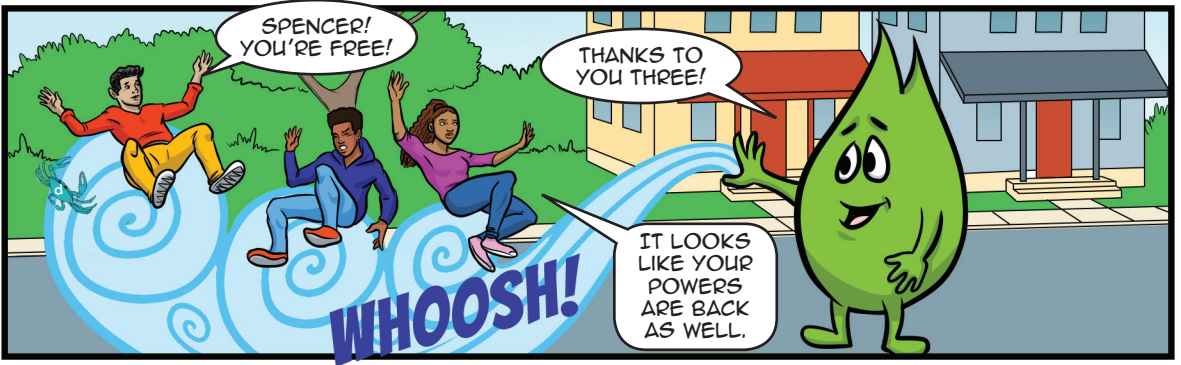
1. The Anacostia and Patuxent River Lower are two local watersheds located within Prince George's County that are a part of the Chesapeake Bay Watershed.  
True False
2. The Chesapeake Bay is longer than the Mississippi River.  
True False
3. Prince George's County was the first County in Maryland to ban single use foam products.  
True False
4. Litter can enter our local waterways if it is disposed of in the storm drain.  
True False
5. The Chesapeake Bay watershed is the largest estuary in the United States with over 100,000 streams, creeks, and rivers draining to the Bay.  
True False
6. Taking care of our local watershed can have a positive impact on the health of the Chesapeake Bay.  
True False
7. Blue Crabs, which are a very important part of the Maryland economy, are strong enough to fight off pollution.  
True False
8. Businesses in Prince George's County charge a fee for single use plastic bags.  
True False
9. Mussels, clams, and oysters filter the water around them.  
True False
10. The water quality of our local rivers, streams, creeks, and lakes, is not as important as the health of the Chesapeake Bay.  
True False

### POINTS CHALLENGE:

+2 points for each correct answer

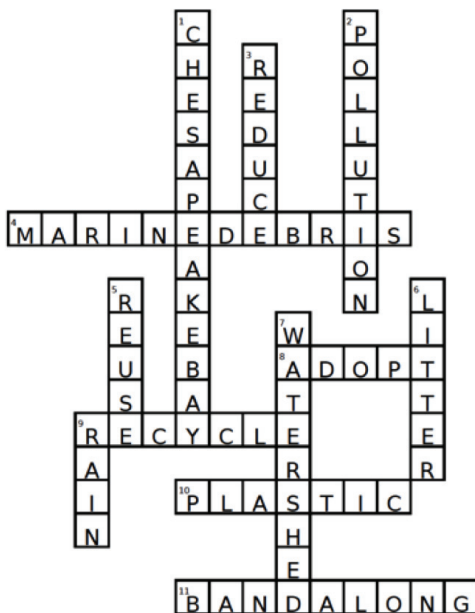






## ANSWER KEY

### Page 8: Crossword Puzzle



### Page 18: True or False

1. True
2. False
3. True
4. True
5. True
6. True
7. False
8. False
9. True
10. False

### Word Scramble:

"Tundra Swan"

- |           |           |
|-----------|-----------|
| T page 20 | S page 7  |
| U page 5  | W page 4  |
| N page 10 | A page 21 |
| D page 21 | N page 16 |
| R page 11 |           |
| A page 19 |           |

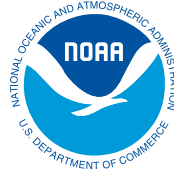
# Prince George's County Clean and Beautiful



Coordinated by



Sponsored by



Consultants



and



Illustrator

**Michael C. Lurry**

©2020

## A HAIKU: LITTER TRAVELS

THE RAIN IS FALLING  
BLOWING LITTER IN THE WIND  
POLLUTION ABOUNDS

JOIN THE FIGHT AGAINST POLLUTION!

