



Texas Marine Debris Emergency Response Guide: Field Reference Guide

NOAA Marine Debris Program
National Oceanic and Atmospheric Administration
U.S. Department of Commerce
July 2022

Table of Contents

1. Introduction	2
1.1. Purpose.....	2
1.2. Scope of <i>Guide</i>	2
2. Texas Waterway Debris Response Flowchart	3
3. Organization Jurisdictions and Capabilities	5
3.1. Texas Waterway Debris Response Map	5
3.2. Response Capabilities	7
4. Permitting and Compliance Requirements in Texas	10
5. Contact Information	12

1. Introduction

1.1 Purpose

This *Field Reference Guide* condenses information contained in the *Texas Marine Debris Emergency Response Guide: Comprehensive Guidance Document (Guide)* to facilitate use during emergency response operations. While the *Comprehensive Guidance Document* serves as a complete reference for incident waterway debris response in Texas, the *Field Reference Guide* includes the most pertinent information for quick reference in the field and during times of crisis. Both documents and subsequent versions will be posted on the NOAA Marine Debris Program website at <https://marinedebris.noaa.gov/>.

The purpose of these documents is to improve preparedness for response and recovery operations following an acute waterway debris incident in coastal Texas. The term acute waterway debris incident is used to describe an incident—either natural or anthropogenic—that results in the release of large amounts of waterway debris. The *Comprehensive Guidance Document* and complementary *Field Reference Guide* outline existing response structures at the local, state, and federal levels to facilitate a coordinated, well-managed, and immediate response to potential waterway debris incidents impacting the state of Texas. Organization roles and responsibilities are presented in a consolidated one-page [flowchart](#) which functions as a decision tree for waterway debris response. Organization jurisdictions are presented in a [map](#), with a dynamic version available [online](#). Additionally, permitting and compliance requirements for waterway debris removal have been synthesized in a one-page reference [handout](#).

1.2 Scope of Guide

The *Comprehensive Guidance Document* and *Field Reference Guide* address potential acute waterway debris incidents affecting Texas’s coastal areas with a focus on the 18 counties within the Texas coastal zone boundary. Throughout this document, the term waterway debris (or incident waterway debris) is used in lieu of the term marine debris. In 33 U.S.C. § 1956(3), marine debris is defined as any persistent solid material that is manufactured or processed and directly or indirectly, intentionally or unintentionally, disposed of or abandoned into the marine environment

or Great Lakes. Although vegetative debris is not included in the legal definition for marine debris, stakeholders have identified it as a common debris stream of concern following natural disasters. To account for both marine debris and vegetative debris in this document, the term waterway debris is used to describe any solid material, including but not limited to vegetative debris and debris that could be exposed to or release oil, hazardous substances, pollutants, or contaminants, that enters a waterway following an acute incident and poses a threat to the natural or man-made environment. This may include shoreline and wetland debris and debris in some inland, non-tidal waterways.

2. Texas Waterway Debris Response Flowchart

The “Texas Waterway Debris Response Flowchart” provides a visual one-page representation of organization roles and responsibilities. The flowchart functions as a decision tree for waterway debris response with color-coded endpoints. Yellow endpoints represent response to waterway debris that could be exposed to or release oil, hazardous substances, pollutants, or contaminants. Blue endpoints represent response to waterway debris that is not exposed to and does not have the potential to release oil, hazardous substances, pollutants, or contaminants. Endpoints within the green shaded area indicate that response may occur under Robert T. Stafford Disaster Relief and Emergency Assistance Act (Stafford Act) authorities and/or funding.

The intent of the flowchart is to outline the most likely response structure with the understanding that flexibility is an inherent component of an effective response.

Texas Waterway Debris Emergency Response Flowchart

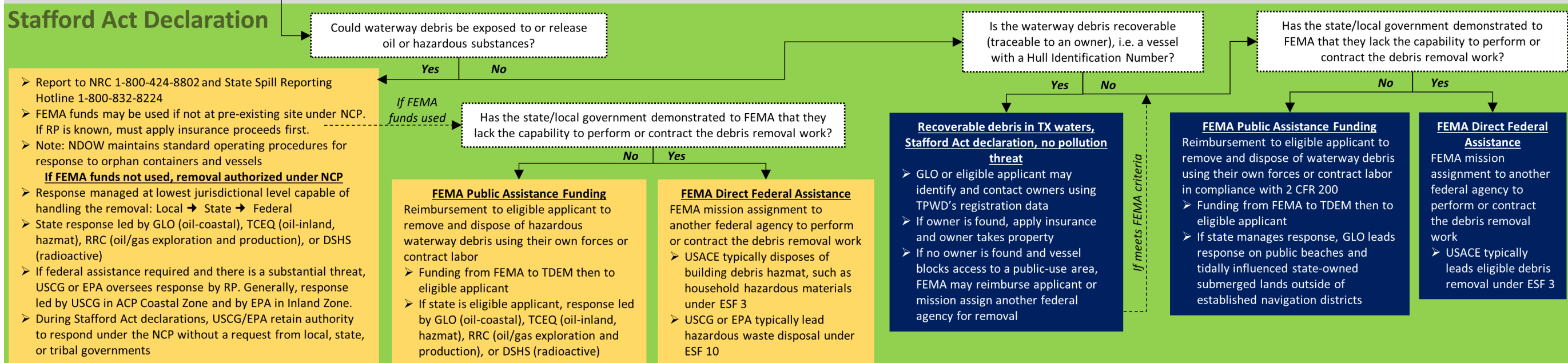
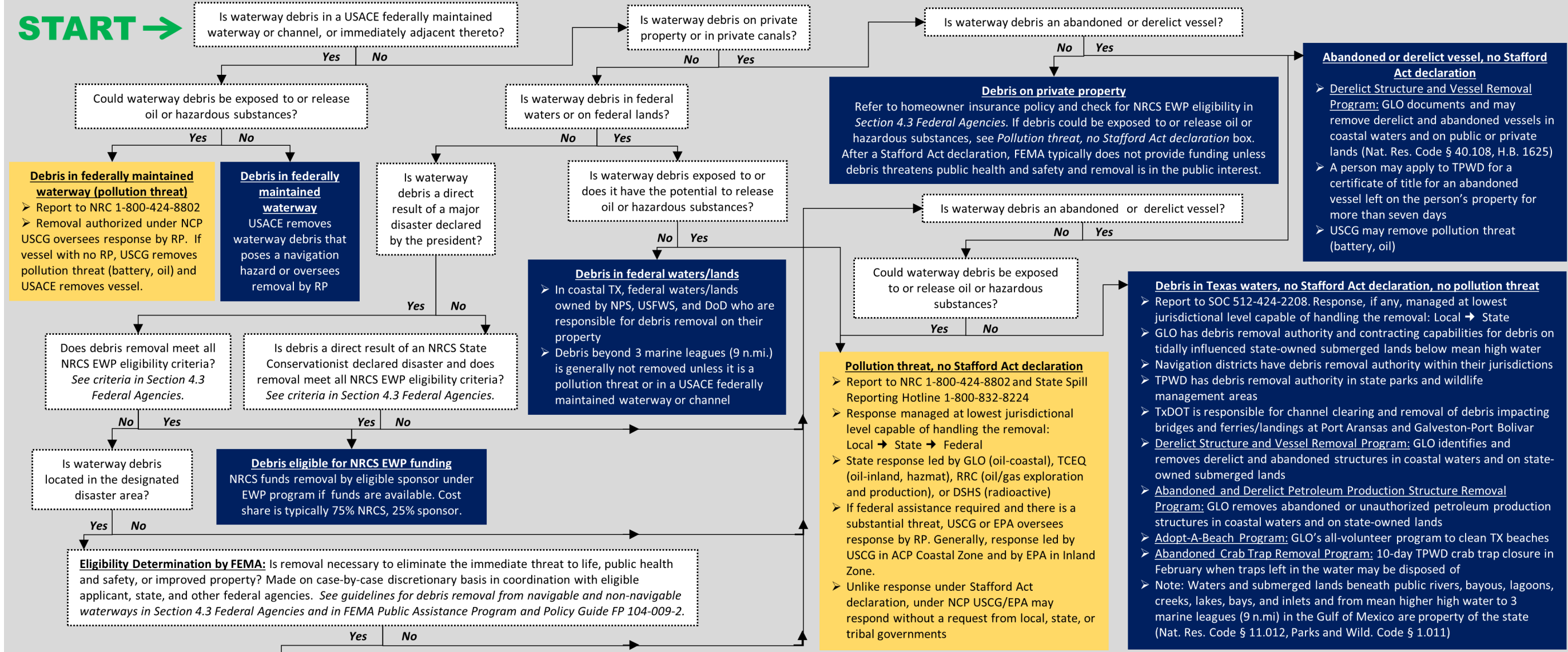
Flowchart Key

- Response to waterway debris that could be exposed to or release oil, hazardous substances, pollutants, or contaminants
- Response to waterway debris that is not exposed to and does not have the potential to release oil, hazardous substances, pollutants, or contaminants
- Indicates response may occur under Stafford Act authorities and/or funds

- Acronyms**
- ACP – Area Contingency Plan
 - DoD – Department of Defense
 - DSHS – TX Department of State Health Services
 - EPA – U.S. Environmental Protection Agency
 - ESF – Emergency Support Function
 - EWP – Emergency Watershed Protection
 - FEMA – Federal Emergency Management Agency
 - GLO – TX General Land Office
 - NCP – National Oil & Hazardous Substances Contingency Plan
 - NDOW – Natural Disaster Operational Working Group
 - NPS – National Park Service
 - NRC – National Response Center
 - NRCS – National Resources Conservation Service
 - RP – Responsible Party (Owner, Operator, Lessee)
 - RRC – Railroad Commission of TX
 - SOC – TX State Operations Center
 - TCEQ – TX Commission on Environmental Quality
 - TDEM – TX Division of Emergency Management
 - THC – TX Historical Commission
 - TPWD – TX Parks and Wildlife Department
 - TxDOT – TX Department of Transportation
 - USACE – U.S. Army Corps of Engineers
 - USCG – U.S. Coast Guard
 - USFWS – U.S. Fish and Wildlife Service

Confirm Compliance

Consult with appropriate authorities to determine whether permits or other approvals are needed prior to debris removal. Debris may be historic property and/or debris response may impact archaeological sites or other protected resources. See *Section 5 Permitting and Compliance Requirements in Texas* for details.

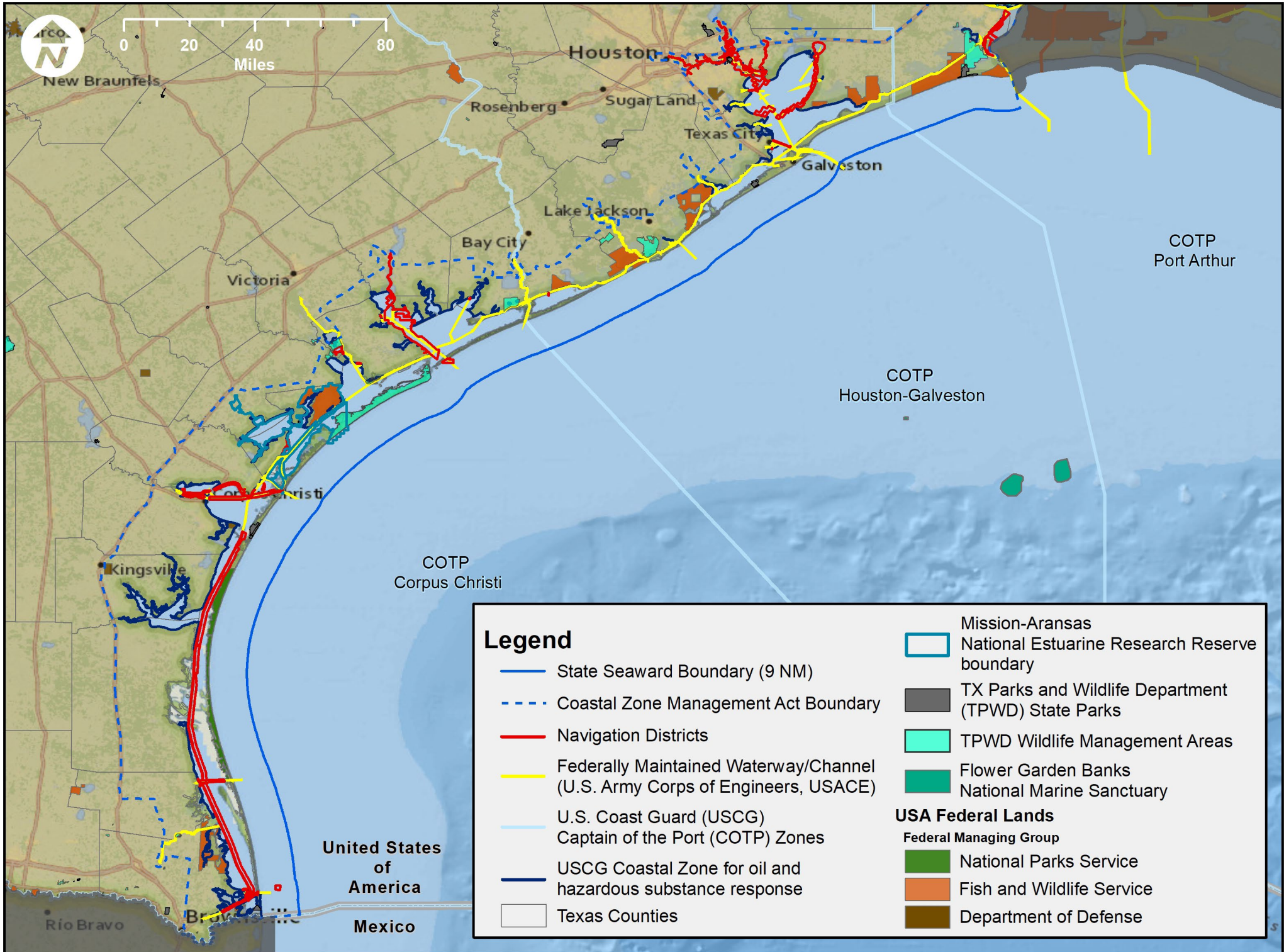


3. Organization Jurisdictions and Capabilities

3.1 Texas Waterway Debris Response Map

The “Texas Waterway Debris Response Map” displays relevant agency jurisdiction boundaries in Texas’s coastal zone. After an acute waterway debris incident, the agency (or agencies) with jurisdiction and authority for removing debris will vary depending on where the debris is located. This map includes information that stakeholders identified as important in determining jurisdiction within the state. A dynamic version of the response map is also available [online](#) in the Environmental Response Management Application (ERMA).

Texas Waterway Debris Response Map



Legend

- State Seaward Boundary (9 NM)
- - - Coastal Zone Management Act Boundary
- Navigation Districts
- Federally Maintained Waterway/Channel (U.S. Army Corps of Engineers, USACE)
- U.S. Coast Guard (USCG) Captain of the Port (COTP) Zones
- USCG Coastal Zone for oil and hazardous substance response
- Texas Counties

- Mission-Aransas National Estuarine Research Reserve boundary
 - TX Parks and Wildlife Department (TPWD) State Parks
 - TPWD Wildlife Management Areas
 - Flower Garden Banks National Marine Sanctuary
- USA Federal Lands**
- Federal Managing Group
- National Parks Service
 - Fish and Wildlife Service
 - Department of Defense

3.2 Response Capabilities

		Local				State					Federal						Non-Governmental			
Yes (Y) - Verified In-house Capability		Chambers-Liberty Counties Nav. District	Port of Corpus Christi Authority	Port Freeport	Port Isabel-San Benito Nav. District	GLO	RRC, Oil & Gas Division	THC ³	TPWD, Coastal Fisheries	UTMSI/Mission-Aransas NERR	FEMA Region 6 ⁵	NOAA	NPS, Padre Island National Seashore	NRCS ¹²	USACE ¹⁴	USCG, Sector Houston-Galveston	USFWS NWRs	Coastal Bend Bays and Estuaries Program	Galveston Bay Foundation	
Cont. (C) - Contracted Capability																				
Technology	Aerial photography and video			Yes		Y	C					Yes			Yes		Cont.	Cont.	Cont.	
	Remote sensing (LIDAR)						C					Yes			Yes		Cont.	Cont.		
	Sub-Surface Detection: Side scan, Single-beam, or Multi-beam sonar		Cont.	Yes		Y	C		Yes	Yes	Cont.	Yes			Y	C		Cont.		
Equipment	Aircraft					Cont.						Yes				Yes ¹⁵				
	Heavy equipment: Barge, self-loading barge, crane, knuckleboom crane, environmental clamshell dredge, excavator					Cont.											Yes	Yes	Cont.	
	Remotely Operated Vehicle (ROV)											Yes								
	Specialized equipment for working in sensitive habitats or accessing remote/challenging areas			Yes		Cont.							Yes ¹⁰		Yes			Y ¹⁸	C	
	Unmanned Aerial Vehicle (UAV)/ Surveillance drone with FAA trained operator	Yes		Yes		Yes			Yes	Yes		Yes			Yes					
	Vessels	Yes	Yes	Yes ¹		Yes			Yes	Yes	Yes	Yes	Yes ¹¹		Yes		Yes	Yes	Y	C
Workforce/Expertise	Debris modeling expertise (volume, transport, hindcasting, etc.)					Cont.				Yes		Yes		Yes						
	Dedicated waterway/marine debris staff (responders, response team, coordination, etc.)		Y	C		Y	C			Yes	Yes			Yes						
	Dive support (scientific, technical, commercial, etc.)											Yes ⁷								
	Environmental or cultural resource expertise (location of sensitive areas, endangered species present, etc.)		Yes			Yes			Yes	Yes	Yes	Yes ^{7,8}	Yes	Yes	Yes		Yes	Yes	Yes	
	Geographic Information System (GIS) mapping and plotting of imagery	Yes	Yes	Yes		Yes	Yes	Yes	Yes	Yes	Yes	Yes	Yes	Yes	Yes		Yes		Yes	

		Local				State					Federal						Non-Governmental			
Yes (Y) - Verified In-house Capability		Chambers -Liberty Counties Nav. District	Port of Corpus Christi Authority	Port Freeport	Port Isabel-San Benito Nav. District	GLO	RRC, Oil & Gas Division	THC ³	TPWD, Coastal Fisheries	UTMSI/ Mission-Aransas NERR	FEMA Region 6 ⁵	NOAA	NPS, Padre Island National Seashore	NRCS ¹²	USACE ¹⁴	USCG, Sector Houston-Galveston	USFWS NWRs	Coastal Bend Bays and Estuaries Program	Galveston Bay Foundation	
Cont. (C) - Contracted Capability																				
Workforce/Expertise	Incident Command System (ICS) trained staff		Yes	Yes		Yes			Yes		Yes	Yes	Yes			Yes ¹⁶	Yes			
	Legal assistance					Yes														
	Public outreach processes in place		Yes	Yes		Yes			Yes	Yes		Yes ⁷		Yes				Yes	Yes	
	Technical expertise for removal operations (techniques, BMPs, etc.)		Y	C		Y	C		Yes	Yes	Yes	Yes	Yes						Yes	
	Volunteer manpower/Volunteer coordination					Yes		Yes		Yes						Yes ¹⁷			Yes	
Logistics	Contracting: Pre-approved waterway debris removal contractors		Cont.			Yes														
	Contracting: Pre-event contracts and staged agreements in place		Cont.			Yes			Yes ⁴											
	Docks for wet storage of vessels	Yes	Yes	Yes	Yes	Cont.			Yes											
	Funding for waterway debris removal		Yes			Yes					Yes ⁶	Yes ⁹		Yes ¹³						
	Process or team in place to identify responsible parties (for debris that can be traced to an owner)		Yes			Yes	Yes												Yes	
	Staging/Off-Loading: Land with water access to stage, offload debris (has not been evaluated for suitability or officially pre-designated)	Yes	Yes		Yes	Y	C ²			Yes			Yes							
	Staging/Off-Loading: Pre-designated (pre-approved) staging, off-loading and special handling areas (already evaluated for suitability)		Yes			Yes							Yes							

Note: Capabilities which could be used during waterway debris response in Texas were either identified through research or were self-reported by an organization. Organizations were asked to indicate whether capabilities were in-house or were contracted through a third party. Footnotes refer to additional information provided for a particular capability.

- ¹Port Freeport 27' CBRN boat with twin 225-hp
- ²GLO For ESF-10 response only
- ³THC Use of services may be limited to cultural resources, but this may be negotiable.
- ⁴UTMSI UT Austin has a contractor in place to provide post-disaster response, but this contract is only responsible to clear/respond to events on UT property (i.e., UTMSI campus only).
- ⁵FEMA Capabilities contingent upon a presidential major disaster declaration. FEMA capable of mission-assigning other federal support to increase capabilities.
- ⁶FEMA May provide reimbursement public assistance funding for eligible debris removal during presidential major disaster declarations when another federal agency does not have authority to fund the activity.
- ⁷NOAA Flower Garden Banks National Marine Sanctuary expertise is limited to offshore resources in the northwestern Gulf of Mexico, primarily within the sanctuary, but some regional.
- ⁸NOAA Coordinates marine mammal and sea turtle stranding response and reviews proposed debris removal activities for compliance with ESA and Magnuson-Stevens Fisheries Conservation and Management Act.
- ⁹NOAA Funding through grant program and possible Congressional supplemental funding.
- ¹⁰NPS Airboat
- ¹¹NPS Three small watercraft
- ¹²NRCS "Marine" debris removal is generally outside NRCS's normal scope of disaster recovery. USDA-NRCS EWP program is targeted to storm debris (primarily vegetation) blocking natural water flow which could potentially cause flooding impacting public facilities. NRCS typically cannot provide assistance for removal on state-owned submerged lands or beaches.
- ¹³NRCS When funding is available, provides emergency financial and technical assistance through the EWP program eligible projects.
- ¹⁴USACE Galveston District, Engineering and Construction Division
- ¹⁵USCG Aircraft provided by Air Station Houston. Aircraft can only be used for aerial identification.
- ¹⁶USCG Sector maintains a National Incident Management System trained Incident Management Team.
- ¹⁷USCG Volunteer coordination is through the volunteer coordination work group of the Area Committee.
- ¹⁸CBBEP 4 x 4 utility vehicle

4. Permitting and Compliance Requirements in Texas

The “Permitting and Compliance for Waterway Debris Removal in Texas” handout on the following page synthesizes permitting and compliance requirements that must be met before waterway debris removal operations begin. The top portion of the one-pager outlines the process to follow to stay in compliance, while the bottom portion highlights specific state and federal agency requirements with general contact information.

Permitting and Compliance for Waterway Debris Removal in Texas

- In Texas's coastal zone, a U.S. Army Corps of Engineers (USACE) permit, a Texas General Land Office (GLO) authorization, and/or a Texas Historical Commission (THC) authorization may be required if debris removal involves dredging, the discharge of dredge or fill material, or involves structures or work impacting the navigability of a waterway.
- The **lead federal agency** is responsible for National Environmental Policy Act (NEPA) compliance and consulting with tribal agencies, Texas Commission on Environmental Quality (TCEQ), THC, Texas Parks and Wildlife Department (TPWD), U.S. Fish and Wildlife Service (USFWS), and the National Oceanic and Atmospheric Administration (NOAA) as required.

Compliance Process if USACE Permit or GLO Authorization is Required

Federally Funded Removal

(for example, FEMA funding under Stafford Act declaration)

Federal Agency Coordination

Coordinate with federal funding agency regarding environmental compliance requirements before applying for USACE permit and/or GLO authorization

- Lead federal agency responsible for NEPA compliance, federal coastal consistency, and consultations with tribal agencies, TCEQ, THC, TPWD, USFWS, and NOAA as required.
- FEMA is lead federal agency under Stafford Act declaration
- Debris removal under Stafford Act declaration may trigger emergency permitting process.

No Federal Funding

(state, local, or privately funded removal)

Permit Application(s)

Submit separate applications to USACE and GLO and both agencies issue separate permits.

As the lead federal agency, USACE ensures NEPA compliance, federal consistency with Texas's Coastal Management Program, and consults with tribal agencies, TCEQ, THC, TPWD, USFWS, and NOAA as required.

Permit(s) Issued

Review all permit conditions including GLO and resource agency requirements.

Debris Removal

All permit conditions and GLO and resource agency requirements must be followed during debris removal activities.

About NEPA

The National Environmental Policy Act (NEPA) requires federal agencies to assess the environmental effects of their proposed actions prior to making decisions.

Primary Agency Requirements and Contact Numbers

TX General Land Office (GLO)
Upper Coast Field Office
281-470-1191
Lower Coast Field Office
361-886-1600

- Authorization may be required for debris removal on state-owned lands (including state-owned submerged lands) that involves dredging or other habitat disturbance
- Reviews state and federal actions and limited local actions in the Texas coastal zone

U.S. Army Corps of Engineers (USACE)

Regulatory Division
Galveston District
409-766-3869

- Permit may be required if debris removal involves dredging, the discharge of dredged or fill material, or involves structures or work impacting the navigability of a waterway
- Some permits that may be required for debris removal in waterways/wetlands
 - SWG-2010-00605** authorizes GLO to temporarily place dredged/fill materials to remove debris, derelict vessels, derelict structures, and abandoned pipelines from waters and state-owned submerged land
 - NWP-3 Maintenance** for removal/maintenance of culverts, sediments or debris accumulated around outfalls, bridges, etc.
 - NWP-18 Minor Discharges** of dredge or fill material
 - NWP-19 Minor Dredging** of no more than 25 cubic yards
 - NWP-22 Removal of Vessels** for removal of wrecked, abandoned, or disabled vessels or other man-made obstructions to navigation

TX Commission on Environmental Quality (TCEQ)

Waste Permits Division
512-239-2335
Water Quality Division
512-239-4671

- Provides oversight and guidance for debris management and disposal
- Authorizes temporary debris management sites for declared state or federal disasters
- Reviews federal permit applications for discharges of dredged or fill material into waters of the United States, including wetlands, to determine whether a proposed discharge will comply with state water quality standards

TX Historical Commission (THC)
TX State Historic Preservation Office (SHPO)
512-463-6100

- Serves as the State Historic Preservation Office and ensures compliance with National Historic Preservation Act and Antiquities Code of Texas
- If waterway debris response involves a federal agency (USACE permit, FEMA funding, etc.), the lead federal agency must consult with THC if activities could affect historic properties
- Consultation required for ground-breaking activities on public land owned or managed by the state or a political subdivision of the state
- Archeological investigations or monitoring, conducted under a THC-issued permit, may be required for ground-disturbing actions that have the potential to affect archeological sites

National Oceanic and Atmospheric Administration (NOAA)

National Marine Fisheries Service (NMFS)
ESA: 727-824-5312
EFH: 409-766-3699

- Consultation required if waterway debris response involves federal permits and/or funding (USACE permit, FEMA funding, etc.) to comply with:
 - Endangered Species Act (ESA) to ensure actions do not jeopardize the continued existence of any listed endangered or threatened marine species or adversely modify designated critical habitat
 - Magnuson-Stevens Fisheries Conservation and Management Act to ensure actions do not adversely affect Essential Fish Habitat (EFH)

U.S. Fish and Wildlife Service (USFWS)

TX Coastal Ecological Services Field Office
281-286-8282 x 237

- Consultation required if waterway debris response involves federal permits and/or funding (USACE permit, FEMA funding, etc.) to comply with:
 - Endangered Species Act (ESA) to ensure actions do not adversely modify designated critical habitat or jeopardize the continued existence of any listed endangered or threatened land or freshwater species and certain marine species such as manatee
 - Coastal Barrier Resources Act to ensure actions do not encourage development on coastal barriers along Texas's coast

5. Contact Information

Contact information is only included for organizations who have provided and/or approved information in the following tables.

Local Agencies

Agency	Topic	Point of Contact	Phone	Email
Navigation Districts and Texas Ports	-	See https://www.texasports.org/membership-overview/member-roster/ for a Texas Ports Association membership roster	-	-
Chambers-Liberty Counties Navigation District	Capability: Docks for wet storage, land with water access to stage	Claudia Sandoval	409-267-3541	claudia@clcmd.org
	Capability: GIS mapping	Pudge Wilcox		pudge@clcmd.org
Port of Bay City Authority	Capability: Docks for wet storage, limited land with water access	Craig Hlavinka	979-863-2103	harbor@portofbaycity.com
Port of Corpus Christi Authority	Planning and coordination	Sarah Garza, Director of Environmental Planning and Compliance	361-885-6163 (O) 361-813-0068 (C)	sarah@pocca.com
		Robert Schulz, Manager of Compliance	361-885-6609 (O) 361-549-3960 (C)	rschulz@pocca.com
Port Freeport	Capability: Docks for wet storage	Al Durel, Director of Operations	979-233-2667 x 5340	durel@portfreeport.com
	Capability: Technology, equipment, workforce/expertise	Chris Hogan, Director of Protective Services	979-373-5911 (O) 979-481-1285 (C)	hogan@portfreeport.com
Port of Harlingen Authority	Planning and coordination	Walker Smith, Port Director	956-423-0283 (O) 956-202-5895 (C)	walker@portofharlingen.com
Port Isabel-San Benito Navigation District	Planning and coordination	Steve Bearden, Port Director/General Manager	956-245-9342	steve@pisbnd.com

State Agencies

Agency	Division	Topic	Point of Contact	Phone	Email
Railroad Commission of Texas (RRC)	-	Report environmental emergency, discharge, spill, or air release from oil and gas facilities, pipelines, or alternative fuels	24-Hour Emergency Reporting Line	844-773-0305	-
	Oil and Gas Division	Capabilities	Larry Elliott	512-463-6852	larry.elliott@rrc.texas.gov
TX A&M University System	TX Division of Emergency Management (TDEM)	State warning point to report emergency situations	24-Hour Texas State Operations Center (SOC)	512-424-2208	SOC@tdem.texas.gov
		Contact for debris-related issues	TDEM Debris Email	512-994-9039	TDEM.debris@tdem.texas.gov
		Public Assistance	Valerie Blanton, Recovery Specialist	512-994-9039	valerie.blanton@tdem.texas.gov

State Agencies Continued

Agency	Division	Topic	Point of Contact	Phone	Email
TX Commission on Environmental Quality (TCEQ)	-	Report spills, unpermitted discharges, or releases to the environment	24-Hour State Spill Reporting Hotline	800-832-8224	-
		Report environmental emergencies and complaints that are not spills	Non-spill Emergencies Hotline	888-777-3186	-
	Critical Infrastructure Division, Emergency Management Support Team	Planning and coordination	Anthony Buck, Emergency Management Coordinator	512-239-1511	anthony.buck@tceq.texas.gov
		Coordinates authorization of temporary debris management sites through regional office	Michelle Havelka, Homeland Security Coordinator	512-426-6715	michelle.havelka@tceq.texas.gov
		Planning and coordination	Melinda Torres, Assistant Homeland Security Coordinator	-	melinda.torres@tceq.texas.gov
	Critical Infrastructure Division, Emergency Management Support Team	Planning and coordination	Christopher Wiatrek, Emergency Management Support Team	512-239-1514	christopher.wiatrek@tceq.texas.gov
	Galveston Bay Estuary Program	Planning and coordination	Lisa Marshall, Program Manager	281-486-1244	lisa.marshall@tceq.texas.gov
	Waste Permits Division	Debris management and disposal	-	512-239-2335	-
	Water Quality Division	Water quality certifications	-	512-239-4671	-
TX General Land Office (GLO) <i>Continued on next page</i>	Asset Enhancement, Construction Services	Removal of unauthorized oil/gas structures	John Mesiroff	512-463-4473	john.mesiroff@glo.texas.gov
	Coastal Protection Division	Derelict structure and vessel removal from public beach and state-owned submerged lands; Capabilities	Rene Garcia, Debris Coordinator	361-886-1606	rene.garcia@glo.texas.gov
		Field Offices: General coordination, compliance, and permitting	Lower Coast Field Office	361-886-1600	-
			Upper Coast Field Office	281-470-1191	-
		Permit Service Center, Corpus Christi	-	361-886-1630	permitting.assistance@glo.texas.gov
	Permit Service Center, Galveston	-	866-894-7664	permitting.assistance@glo.texas.gov	
	Coastal Resources Division	Adopt-A-Beach Program	Adrian Loucks Tuggle, Coordinator	512-463-5057	adrian.loucks@glo.texas.gov
	Oil Spill Prevention and Response	Report spills, unpermitted discharges, or releases to the environment	24-Hour State Spill Reporting Hotline	800-832-8224	-
		Derelict vessel coordinator, oil spill	Michelle Castilleja	512-463-2613	michelle.castilleja@glo.texas.gov
		Region 1	Ryan Lytle	409-727-7481	ryan.lytle@glo.texas.gov
			Eric Robertson	409-727-7481	eric.robertson@glo.texas.gov
		Region 2	Tyler Swanson	281-470-6597	tyler.swanson@glo.texas.gov
			Jesse Mayorga	281-470-6597	jesse.mayorga@glo.texas.gov
		Region 3	James Duenes	361-438-2593	james.duenes@glo.texas.gov
Frank McDaniel			361-886-1650	frank.mcdaniel@glo.texas.gov	
Region 4	Michael Janskowski	956-504-1417	michael.janskowski@glo.texas.gov		
	Gonzalo Pena	956-504-1417	gonzalo.pena@glo.texas.gov		

State Agencies Continued

Agency	Division	Topic	Point of Contact	Phone	Email
Continued from previous page TX General Land Office (GLO)	Oil Spill Prevention and Response	Region 5	Tony Belton	361-552-8081	tony.belton@glo.texas.gov
			Rusty Moon	361-552-8081	rusty.moon@glo.texas.gov
Texas Historical Commission (THC) TX State Historic Preservation Office (SHPO)	-	General coordination	-	512-463-6100	-
	Archeology Division	Marine Archeology Program (waterway and beach debris); Capability: Vessels, sub-surface detection	Amy Borgens, State Marine Archeologist	512-463-9505	amy.borgens@thc.texas.gov
		State and Federal Review (inshore and inland debris)	Bill Martin, Archeologist and Reviewer	512-463-5867	bill.martin@thc.texas.gov
		Capability: Drones	Arlo McKee, Archeologist and Reviewer	512-463-5711	arlo.mckee@thc.texas.gov
History Programs	State and Federal Review (aboveground resources)	Caitlin Brashear, Historian	512-463-5851	caitlin.brashear@thc.texas.gov	
TX Parks and Wildlife Department (TPWD)	Coastal Fisheries Division, Ecosystem Resource Program	Capability: Sonar, GIS	Emma Clarkson	361-825-3380	emma.clarkson@tpwd.texas.gov
		Capability: Public outreach	Holly Grand	361-431-6003 x 822	holly.grand@tpwd.texas.gov
		Planning and coordination	Claire Iseton	281-534-0137	claire.iseton@tpwd.texas.gov
	State Parks Division, Cultural Resources Program	State park cultural and natural resources	Michael Strutt, Director	512-389-4736	michael.strutt@tpwd.texas.gov
University of Texas Marine Science Institute (UTMSI)	Mission-Aransas National Estuarine Research Reserve (NERR)	Response within reserve boundaries; Capability: Environmental or cultural resources, public outreach, volunteers, pre-event contracting	Jace Tunnell, Reserve Director	361-749-3046 361-244-8665	jace.tunnell@austin.utexas.edu
		Capability: Dive support	Frank Ernst	-	frank.ernst@utexas.edu
		Capability: Staging/off-loading	James Thompson, Facilities Director	-	james.thompson@austin.utexas.edu
		Capability: Public outreach	Sally Palmer	361-728-1025	sally.palmer@utexas.edu
		Capability: Volunteers	Savannah Martinez	-	savannah.martinez@austin.utexas.edu
		Capability: Vessels, debris modeling, marine debris staff, environmental/ cultural resources, GIS, removal expertise, docks for wet storage, staging/off-loading	Katie Swanson, Stewardship Coordinator	361-749-3106 (O) 716-397-8294 (C)	katie.swanson@utexas.edu

Federal Agencies

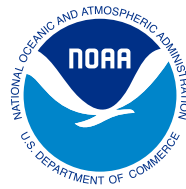
Agency	Division	Topic	Point of Contact	Phone	Email
Bureau of Safety and Environmental Enforcement	Marine Trash and Debris Program	Planning and coordination	James Sinclair, Marine Ecologist	504-736-2789	james.sinclair@bsee.gov
Federal Emergency Management Agency (FEMA)	Region 6	Environmental and Historic Preservation	Sarah Carrino, Regional Unified Federal Review Coordinator	202-733-7908 (C)	sarah.carrino@fema.dhs.gov
			Kevin Jaynes, Regional Environmental Officer	940-230-5126 (C)	kevin.jaynes@fema.dhs.gov
		Public Assistance	Don Simko, Public Assistance Branch Chief	202-322-9591	donald.simko@fema.dhs.gov
National Oceanic and Atmospheric Administration (NOAA)	National Marine Fisheries Service (NMFS or NOAA Fisheries)	Emergency ESA/EFH consultation	-	-	nmfs.ser.emergency.consult@noaa.gov
		EFH information	Rusty Swafford	409-766-3699	rusty.swafford@noaa.gov
		ESA information	General Contact, Routine ESA Consultation Joe Cavanaugh, Consultation Biologist	727-824-5312 727-551-5097	- joseph.cavanaugh@noaa.gov
	National Ocean Service, Office of Coast Survey	Navigation preparation and response	Quentin Stubbs, Regional Navigation Manager – Western Gulf Coast	202-253-9180	texas.navmanager@noaa.gov
	National Ocean Service, Office of National Marine Sanctuaries, Flower Garden Banks National Marine Sanctuary	Capability: Education	Kelly Drinnen, Education and Outreach Specialist	409-356-0388	kelly.drinnen@noaa.gov
		Capability: Dive support, Environment, GIS	Emma Hickerson, Research Coordinator	409-356-0390 (O) 979-777-3895 (C)	emma.hickerson@noaa.gov
		Capability: Vessels	Vessel Operations Coordinator	409-356-0395	voc.fgb@noaa.gov
		Planning and coordination	G.P. Schmahl, Sanctuary Superintendent	409-356-0383	george.schmahl@noaa.gov
	National Ocean Service, Office of Response and Restoration, Emergency Response Division	Potential to release oil or hazardous substance	Paige Doelling, Scientific Support Coordinator for U.S. Coast Guard District 8	206-549-7819 (C)	paige.doelling@noaa.gov
	National Ocean Service, Office of Response and Restoration, Marine Debris Program	Planning and coordination for marine debris issues	Caitlin Wessel, Gulf of Mexico Regional Coordinator	251-544-5013 (O) 251-222-0276 (C)	caitlin.wessel@noaa.gov
National Park Service (NPS)	Big Thicket National Preserve	Response in Big Thicket National Preserve	Wayne Prokopetz	409-951-6801	a_wayne_prokopetz@nps.gov
	Padre Island National Seashore	Response in Padre Island National Seashore	Mark Spier	361-949-8173 x 222	mark_spier@nps.gov
		Capability contact	Brian Slate	361-949-8173 x 240	brian_slate@nps.gov
	-	Response on NPS-owned lands	C. Anna Toline, Marine Scientist, Oceans Program Coordinator	843-518-1939	catherine_toline@nps.gov
Natural Resource Conservation Service (NRCS)	-	Emergency Watershed Protection (EWP) Program Information	Michael Robison, Texas EWP Program Manager	254-742-9901	michael.robison@usda.gov
			See https://offices.sc.egov.usda.gov/locator/app?agency=nrcs for USDA-NRCS County Field Offices	-	-
		Capability: GIS mapping	Ryan Nagelkirk	254-742-9985	ryan.nagelkirk@usda.gov
		Capability: Environmental or cultural resource expertise	Alan Stahnke	254-742-9857	alan.stahnke@usda.gov
Capability: Public outreach	Lori Valadez	254-742-9810	lori.valadez@usda.gov		

Federal Agencies Continued

Agency	Division	Topic	Point of Contact	Phone	Email
U.S. Army Corps of Engineers (USACE), Galveston District	Emergency Management	Emergency response	Alicia Rea	409-771-6174	alicia.d.rea@usace.army.mil
	Engineering and Construction Division	Capability: Sub-surface detection, vessels, debris modeling, staff, GIS	Erin Diurba	409-766-3968	erin.s.diurba@usace.army.mil
		Capability: Aerial photography, LIDAR, specialized equipment, UAV, debris modeling, GIS	Rick Vera	409-766-3142	ricardo.j.vera@usace.army.mil
	Navigation and River Operations	Federally maintained waterway or channel	Belynda Kinman, Chief of Navigation	409-766-6323 (O) 409-739-0542 (C)	belynda.m.kinman@usace.army.mil
	Regulatory Program	Compliance and permitting	Regulatory Division Robert Heinly, Deputy Chief	409-766-3869 409-766-3992	CESWGRegulatoryInbox@usace.army.mil robert.w.heinly@usace.army.mil
U.S. Coast Guard (USCG)	-	Report potential to release oil or hazardous substance	National Response Center (NRC)	800-424-8802	-
	District 8	Planning and coordination	Dee Oos, Area Contingency Plan Program Manager	504-671-2233	damara.a.oos@uscg.mil
			Mike Sams, Incident Management Preparedness Advisor	504-671-2234	michael.k.sams@uscg.mil
			Adam Tyndale, Response Equipment Coordinator	504-671-2063	adam.j.tyndale@uscg.mil
			District Response Advisory Team (DRAT) Supervisor	504-589-6225	-
	District 8, Sector Corpus Christi	General contact	USCG Sector Corpus Christi Command Center	361-939-0450	-
District 8, Sector Houston-Galveston	General contact	USCG Sector Houston-Galveston Command Center	281-464-4840	-	
U.S. Environmental Protection Agency (EPA)	Region 6	Report potential to release oil or hazardous substance	National Response Center (NRC)	800-424-8802	-
		General contact	EPA Region 6 Duty Officer	866-372-7745	-
U.S. Fish and Wildlife Service (USFWS)	National Wildlife Refuges (NWR)	Response in Texas coastal NWRs	Sonny Perez, Refuge Supervisor	-	sonny_perez@fws.gov
		Texas NWRs Oil and Gas Response	Mary Maddux	903-786-2826	mary_maddux@fws.gov
	Texas Coastal Ecological Services Field Office	Compliance and permitting	- Moni Belton	281-286-8282 x 237 281-212-1512	- moni_belton@fws.gov

Non-Governmental Organizations

Organization	Topic	Point of Contact	Phone	Email
Coastal Bend Bays and Estuaries Program	Capabilities: Technology, specialized heavy equipment	Jake Herring	361-244-0258	jherring@cbbep.org
	Capability: Environmental/cultural expertise	Rosario Martinez	361-658-3802	rmartinez@cbbep.org
	Capabilities: Vessels, environmental/cultural expertise	David Newstead	361-834-1484	dnewstead@cbbep.org
	Capability: Public outreach	Kathryn Tunnell	361-779-1803	ktunnell@cbbep.org
Galveston Bay Foundation	Capability: Communications and outreach	Anthony Opperman, Communications and Marketing Manager	832-536-2259	aopperman@galvbay.org
	Capability: Volunteer coordination	Emily Ford, Volunteer Programs Manager	832-536-2256	eford@galvbay.org
	Programs including marine debris surveys, water quality monitoring, and pollution reporting	Charlotte Cisneros, Community Programs Manager	832-536-2279	ccisneros@galvbay.org
	Capability: GIS	Haille Leija, Habitat Restoration Manager	832-536-2270	hleija@galvbay.org
	Capabilities: Heavy equipment, vessels, environmental resources, technical expertise for removal, logistics	Philip Smith, Director of Habitat Restoration	832-536-2258	psmith@galvbay.org
	Planning and coordination	Bob Stokes, President	281-332-3381	bstokes@galvbay.org



Gina M. Raimondo
United States Secretary of Commerce

Dr. Richard W. Spinrad
Under Secretary of Commerce for Oceans and Atmosphere
and NOAA Administrator

Nicole R. LeBoeuf
Assistant Administrator for Ocean Services
and Coastal Zone Management